

Development Authority of the North Country

Procedure Title: LOCAL SOLID WASTE MANAGEMENT PLAN
Document Type: LANDFILL PLANNING
Rev #: 1
Document Owner: Recycling Coordinator
Document Owner Supervisor: Director of Materials Management
Review Cycle: Annual

Local Solid Waste Management Plan June 2025

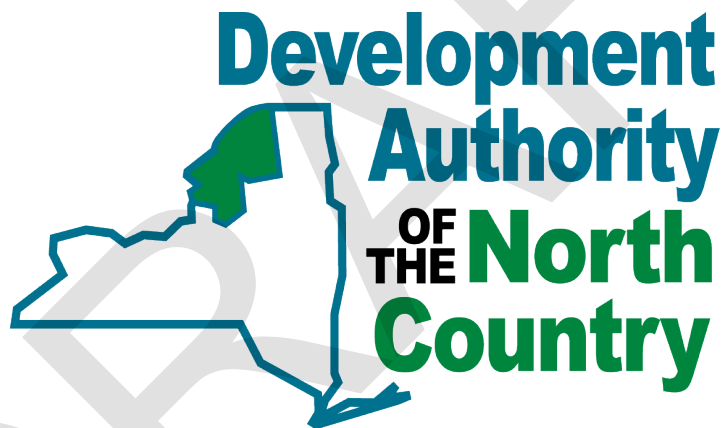


Table of Contents

1. PLANNING UNIT MEMBERS AND DESCRIPTION.....	1
1.1. Planning Unit Population Served	1
1.1.1. Major Population Centers	2
1.1.2. Industries	2
1.1.3. School Districts and Institutions	3
1.1.4. Agricultural Use	4
1.2. Neighboring Planning Units and Other Jurisdictions	5
1.3. Seasonal Variations and Unique Characteristics.....	5
1.3.1. State or Federal Parks	6
1.4. Solid Waste Management Activities.....	6
1.4.1. Changes in the Planning Unit since the previous LSWMP	7
2. WASTE GENERATION AND MATERIALS RECOVERY DATA.....	7
2.1. Description of the Waste Stream.....	7
2.2. Projections of MSW Generation	8
2.3. Recyclable and Diverted Materials	9
2.4. Summary of Data Gaps and Informational Needs.....	10
3. DESCRIPTION OF SOLID WASTE MANAGEMENT FACILITIES AND PROGRAMS.....	11
3.1. Identification of Known Facilities	11
3.1.1. Planning Unit Transfer Stations	13
3.2. Description of Waste Reduction, Reuse, and Recycling Program.....	14
3.2.1. Recyclables Collected and Processing.....	14
3.2.2. Organics Recovery	14
3.2.3. Public Outreach and Education.....	14
3.2.4. Efforts to Enforce Local Disposal and Recycling Laws.....	15
3.2.5. Volume-Based Pricing Incentives	15
3.2.6. Recycling Markets Agreements	15
3.2.7. Local Hauler Licensing	16
3.2.8. Data Collection Efforts	16
4. ADMINISTRATIVE AND FINANCIAL STRUCTURE.....	16
4.1. Planning Unit Organizational Charts	16
4.2. Financial Structure of the Planning Unit.....	19
4.3. Laws, Regulations, or Ordinances Related to Solid Waste Management in Effect	19
5. ASSESSMENT AND EVALUATION OF ALTERNATIVES	20
5.1. Program Assessment.....	20
5.1.1. Waste Diversion Programs	20
5.1.2. Reuse Programs	20
5.1.3. Recyclable Recovery Programs for Paper, Metal, Glass, and Textiles	21
5.1.4. Organics Recovery Programs	22
5.1.5. Programs to Develop or Improve Local and Regional Markets.....	23
5.1.6. Enforcement Programs	23
5.1.7. Incentive-Based Pricing	24
5.1.8. Education and Outreach.....	24
5.1.9. Data Collection and Evaluation	25
5.1.10. Local Hauler Licensing & Flow Control	26

5.1.11.	C&D Debris Reduction	26
5.1.12.	Private Sector Management and Coordination	27
5.1.13.	Alternative Waste Disposal Options	27
6.	IMPLEMENTATION PLAN AND SCHEDULE.....	28
6.1.	Detailed Implementation Schedule.....	28
7.	WASTE STREAM PROJECTIONS	29
8.	PUBLIC PARTICIPATION & RESPONSIVENESS SUMMARY.....	30
9.	RESOLUTION ADOPTING THE LSWMP.....	30
	<i>Appendix A – 2016-2025 Implementation Schedule</i>	<i>2</i>
	<i>Appendix B – 2016-2025 Summary of Implementation efforts and Achievements.....</i>	<i>3</i>
	<i>Appendix C – Combined Recycling Guidelines.....</i>	<i>4</i>
	<i>Appendix D – Planning Unit Local Ordinances</i>	<i>0</i>
	<i>Appendix E – 2025-2034 Implementation Schedule</i>	<i>1</i>
	<i>Appendix F – 2025-2034 DEC Calculator</i>	<i>2</i>
	<i>Appendix G – Public Participation and Responsiveness.....</i>	<i>3</i>
	<i>Appendix H – Resolution Adopting 2025-2034 LSWMP</i>	<i>4</i>
	<i>Appendix I – DEC Approval Letter for 2025-2034 LSWMP.....</i>	<i>5</i>
	Figure 1 - Planning Unit.....	1
	Figure 2 - 2020-2024 Composition of Waste Stream	8
	Figure 3 - Planning Unit Transfer Stations.....	13
	Figure 4 - Authority MMF Organizational Chart	17
	Figure 5 - Jefferson County Solid Waste Organization Chart.....	18
	Figure 6 - Lewis County Solid Waste Organizational Chart.....	18
	Figure 7 - St. Lawrence County Solid Waste Organizational Chart.....	19
	Figure 8 - MSW Material Composition	29
	Figure 9 - MSW Generated vs. MSW Diverted.....	30
	Table 1 - Planning Unit Details	2
	Table 2 - Major Population Centers.....	2
	Table 3 - 2023-2024 Solids Waste Stream.....	7
	Table 4 - 2023 Recycled & Diverted Materials.....	9
	Table 5 - 2024 Recycled and Diverted Materials	10
	Table 6 - 2023-2024 Planning Unit Tonnage	12
	Table 7 - Waste Diversion Programs	20
	Table 8 - Reuse Programs	21
	Table 9 - Recyclable Recovery Programs	22
	Table 10 - Organics Recovery Programs	22
	Table 11 - Programs to Develop or Improve Local and Regional Markets.....	23
	Table 12 - Enforcement Programs	24
	Table 13 - Incentive Programs.....	24
	Table 14 - Education and Outreach Programs.....	25

Table 15 - Data Collection and Evaluation Programs.....26
Table 16 - Local Haulers Licensing & Flow Control.....26
Table 17 - C&D Debris Reduction Programs.....27
Table 18 - Private Sector Management and Coordination27
Table 19 - Alternative Waste Disposal Options28

DRAFT

1. PLANNING UNIT MEMBERS AND DESCRIPTION

The Development Authority of the North Country (Authority), in partnership with Jefferson County, Lewis County and St. Lawrence County, prepared this Local Solid Waste Management Plan (LSWMP), which will be effective for a 10-year planning period, starting January 1, 2026 and ending December 31, 2035. This LSWMP addresses and considers current regulations and future needs of the three-county region (i.e., the Planning Unit), as well as pertinent items in the 2024 New York State Department of Environmental Conservation (NYSDEC) State Solid Waste Management Plan.

The Authority was created in 1985 by the New York State Legislature to develop and manage the infrastructure needed to support the reactivation of the 10th Mountain Division at Fort Drum, and to serve the common interests of Jefferson, Lewis and St. Lawrence counties. The Authority operates as a revenue-based public benefit corporation, independent of state operational funding. The mission of the Authority is to serve the common interests of Jefferson, Lewis and St. Lawrence Counties by providing technical services and infrastructure, which will enhance economic opportunities in the region and promote the health and well-being of its communities and Fort Drum. An unpaid 13-member Board of Directors sets the policy and strategic direction of the Authority, which is then implemented by executive management and staff. Figure 1 - Planning Unit is a map of the planning unit.

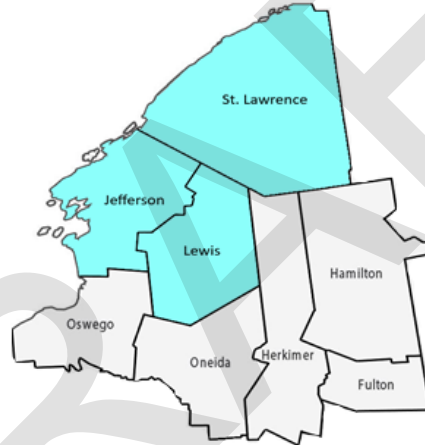


Figure 1 - Planning Unit

1.1. Planning Unit Population Served

Table 1 - Planning Unit Details provides details on the Planning Unit counties and population. St. Lawrence County is the largest county in New York State while Lewis County is the ninth largest, and Jefferson is the tenth. The total Planning Unit land area is greater than the land area of the State of Connecticut. The size of the Planning Unit area and the resultant impact on transportation costs are major considerations for the LSWMP.

County	Area (square miles)	Population 2010 Census	Population 2020 Census	Population Density (1) (people/sq. mile)	Urban	Suburban	Rural
Jefferson	1,269	116,229	116,721	92	59,084 (51%)	0 (0%)	57,637 (49%)
Lewis	1,275	27,087	26,582	21	0 (0%)	0 (0%)	26,582 (100%)
St. Lawrence	2,680	111,944	108,505	40	35,877 (33%)	0 (0%)	72,628 (67%)
Total	5,224	255,260	251,808	48	94,961	0 (0%)	156,847

Table 1 - Planning Unit Details¹

The population in Jefferson County increased by 0.4 percent between 2010 and 2020. The City of Watertown and Fort Drum (Town of LeRay) are the major population centers in Jefferson County. The population in Lewis County decreased by 1.86 percent and in St. Lawrence County by 3.07 percent between 2010 and 2020. Lowville and Croghan are the largest towns in Lewis County. The Villages of Potsdam, Massena, and Canton, and the city of Ogdensburg are the largest population centers in St. Lawrence County. Outside the below-mentioned cities and towns, the majority of the Planning Unit is considered rural.

1.1.1. Major Population Centers

The major population centers in each county are provided in Table 2 - Major Population Centers. Watertown, Lowville and Canton are the county seats for Jefferson, Lewis, and St. Lawrence Counties, respectively. The City of Watertown is centrally located within Jefferson County, with no part of the county more than 28 miles away from Watertown.

Jefferson County		Lewis County		St. Lawrence County	
Municipality	Population	Municipality	Population	Municipality	Population
C/Watertown	24,685	V/Lowville	3,272	C/Ogdensburg	10,064
Fort Drum	15,896	V/Copenhagen	631	V/Massena	12,443
V/Carthage	3,236	V/Port Leyden	554	V/Potsdam	14,901
V/West Carthage	1,780	V/Harrisville	604	V/Canton	7,155
V/Clayton	1,705	V/Croghan	639	V/Gouverneur	3,526

Table 2 - Major Population Centers²

1.1.2. Industries

The Planning Unit encompasses a diverse regional economy supported by industries such as agriculture, forestry, manufacturing, construction, energy, tourism, transportation, warehousing, and retail. These sectors are foundational to local employment, economic resilience, and resource management across the tri-county area.

Jefferson County benefits from a balanced economy led by government, manufacturing, healthcare, and tourism. Fort Drum remains the county’s largest employer, contributing significantly to the regional economy with nearly 20,000 military and civilian personnel. The healthcare sector is anchored by Samaritan Medical Center and Jefferson Rehabilitation Center. Manufacturing continues to play a strong role, with employers such as New York Air Brake and Car-Freshener Corporation producing rail and automotive-related goods. Private-sector job growth has also expanded opportunities in food services, retail, and accommodations, particularly in tourism-rich areas near the Thousand Islands.

Lewis County maintains its historical strength in forestry, with more than 100 active logging operations and numerous facilities converting raw timber into finished products. The wood products industry remains vital, alongside growing investments in sustainable development, renewable energy, and tourism. The county supports food processing and

¹ U.S. Census Bureau, *New York*, 2020 Census Data.

² U.S. Census Bureau, *New York*, 2020 Census Data.

dairy operations, including the presence of Kraft Heinz, which produces cream cheese and other dairy products at its Lowville facility. The local economy is also bolstered by a strong sense of community entrepreneurship and small manufacturing enterprises.

St. Lawrence County is a leader in agriculture, with over 1,000 farms producing dairy, grain, vegetables, beef, and maple syrup. The county supports a robust value-added agriculture industry, with yogurt and cheese processed in several local plants. In manufacturing, the Massena-based Alcoa facility continues to serve as a major aluminum producer and regional employer. Corning Incorporated recently expanded its high-tech glass manufacturing operations in Canton, producing high-purity fused silica for the semiconductor industry. Additional economic activity stems from forestry, mineral extraction (including zinc and wollastonite), and light manufacturing, especially in industrial parks such as those in Ogdensburg and Gouverneur. Renewable energy, advanced materials, and cross-border trade with Canada also play an increasing role in shaping the local economy.

1.1.3. School Districts and Institutions

Jefferson County

- **Public Schools:** Jefferson County comprises 11 public school districts, encompassing 37 public schools. The total K–12 public school enrollment is 16,267 students³.
- **Non-Public Schools:** There are 5 non-public schools in the county, serving over 1,100 students.
- **Higher Education:** Jefferson Community College (JCC), located in Watertown, is the sole institution of higher education within a 50-mile radius. As a SUNY campus, JCC offers over 30 programs and serves approximately 1,431 full-time students.
- **Hospitals:** Three hospitals serve Jefferson County, located in Carthage, Alexandria Bay, and Watertown.

Lewis County

- **Public Schools:** The county has 5 public school districts, encompassing 13 public schools, with a total K–12 public school enrollment of 3,831 students⁴.
- **Non-Public Schools:** There are 3 non-public schools in Lewis County, enrolling over 220 students.
- **Higher Education:** While there are no colleges or universities located within Lewis County, residents have access to nearby institutions in adjacent counties, including Jefferson Community College in Watertown and SUNY Polytechnic Institute in Utica.
- **Hospitals:** Lewis County General Hospital, located in Lowville, serves as the primary healthcare facility for the county.

³ JEFFERSON COUNTY | NYSED Data Site. (2023). Nysed.gov. <https://data.nysed.gov/profile.php?county=22>

⁴ 2024 | LEWIS COUNTY - Enrollment Data | NYSED Data Site. (2024). Nysed.gov. <https://data.nysed.gov/enrollment.php?year=2024&county=23>

St. Lawrence County

- **Public Schools:** St. Lawrence County encompasses 17 public school districts with 41 public schools, serving a total K–12 public school enrollment of 12,984 students⁵.
- **Non-Public Schools:** The county has 16 non-public schools, enrolling over 700 students.
- **Higher Education:** St. Lawrence County is home to several higher education institutions, including:
 - Clarkson University (Potsdam)
 - St. Lawrence University (Canton)
 - SUNY Canton
 - SUNY Potsdam

These institutions contribute significantly to the county's educational landscape and have an impact on local waste generation and management.

- **Hospitals:** Five hospitals serve St. Lawrence County, located in Gouverneur, Massena, Ogdensburg, Potsdam, and Star Lake.

These educational institutions and healthcare facilities play a vital role in the region's waste generation patterns. Schools and colleges contribute to municipal solid waste through daily operations, events, and seasonal activities. Hospitals generate both municipal and medical waste, necessitating specialized handling and disposal methods. Understanding the distribution and scale of these institutions is essential for effective waste management planning and resource allocation.

1.1.4. Agricultural Use

Jefferson, Lewis, and St. Lawrence Counties all have large segments of land dedicated to agriculture and farm operations. According to the 2022 Census of Agriculture, 31% of land in Jefferson County is used as farmland, 19% in Lewis County, and 17% in St. Lawrence County⁶. While these farms generate a lot of organic material, the Counties do not have specific data to report as the organic material is typically handled at the farms and does not come to the Counties' facilities.

Jefferson County has many dairy farms, which produce the fourth largest quantity of milk in New York State. Jefferson County's farm operations produce the largest quantity of hay in the state. The average size of a farm in Jefferson County is 32 acres⁷. Agriculture is considered the largest industry in Lewis County. The largest percentage of agricultural sales are attributed to animal products, such as milk and meat, with the remaining revenue derived from commercial horticulture as well as sales of hay and other crops. Lewis County dairy farms produce the fifth largest quantity of milk in New York State. The average size of a farm in Lewis County is 318 acres⁸. Forestry is the other large industry in Lewis County. St. Lawrence County ranks third in the state for number of farms and

⁵ 2024 | SAINT LAWRENCE COUNTY - Enrollment Data | NYSED Data Site. (2024). Nysed.gov.

<https://data.nysed.gov/enrollment.php?year=2024&county=51>

⁶ A Profile of Agriculture in New York State. (2024). <https://www.osc.ny.gov/files/reports/pdf/profile-of-agriculture-in-nys.pdf>

⁷ *Percent of state agriculture sales.* (n.d.). Retrieved March 7, 2025, from

https://www.nass.usda.gov/Publications/AgCensus/2017/Online_Resources/County_Profiles/New_York/cp36045.pdf

⁸ *Percent of state agriculture sales.* (n.d.). Retrieved March 7, 2025, from

https://www.nass.usda.gov/Publications/AgCensus/2022/Online_Resources/County_Profiles/New_York/cp36049.pdf

second for land in farms. The leading products sold in St. Lawrence County are milk, dairy, cattle, hay, grains and vegetables. The average size farm in St. Lawrence County is 273 acres⁹.

1.2. Neighboring Planning Units and Other Jurisdictions

The neighboring Planning Units, as identified by the NYSDEC, include:

- Oswego County
- Oneida-Herkimer Solid Waste Management Authority (OHSWA)
- Hamilton County
- Franklin County Solid Waste Management Authority (Franklin County)

Jefferson, Lewis, and St. Lawrence Counties have a limited inflow of waste due to mutual flow control agreements both in the Planning Unit and in neighboring counties. For this reason, neighboring Planning Units have no role in waste generation within this Planning Unit.

1.3. Seasonal Variations and Unique Characteristics

The Planning Unit experiences distinct seasonal variations and unique characteristics in population and solid waste generation. These fluctuations are influenced by tourism, seasonal residences, outdoor recreation, educational institutions, and military operations, all of which contribute to changes in both population and waste management needs throughout the year.

Jefferson County is significantly affected by summer tourism, particularly in the 1000 Islands region. Popular destinations such as Alexandria Bay, Clayton, Sackets Harbor, and Cape Vincent attract thousands of visitors from across the country and Canada, especially between Memorial Day and Labor Day. The seasonal influx is driven by boating, fishing, historical tourism, and waterfront events. According to the 1000 Islands International Tourism Council, the county's population increases by an estimated 20–25% during peak summer months, leading to a noticeable rise in solid waste volumes, especially recyclables, food waste, and packaging materials. Additionally, Fort Drum, a major U.S. Army installation located near Watertown, contributes unique characteristics to the county's waste profile. While the base has a relatively stable population, deployments, training exercises, and troop rotations may result in short-term changes in local service demands and waste generation patterns.

Lewis County, located on the western edge of the Adirondack Park, experiences modest but notable seasonal variations due to recreational tourism. The region is known for its snowmobiling, downhill and cross-country skiing, and hunting, attracting visitors during the winter and fall seasons. Areas such as the Tug Hill Plateau receive significant snowfall—among the highest in the eastern United States—which supports a vibrant winter sports economy. While the total population change is less dramatic than in Jefferson County, there is still a seasonal uptick in waste, particularly at local hospitality businesses, second homes, and recreational sites.

St. Lawrence County is New York State's largest by land area and contains a mix of rural communities, forested areas, and waterfront properties along the St. Lawrence River. Like Lewis County, it includes part of the Adirondack Park and supports a strong tourism and seasonal housing sector. Communities such as Ogdensburg, Waddington, and Massena see increased summer

⁹ *Percent of state agriculture sales.* (n.d.). Retrieved March 7, 2025, from https://www.nass.usda.gov/Publications/AgCensus/2017/Online_Resources/County_Profiles/New_York/cp36089.pdf

activity due to boating, fishing, and waterfront events. In addition, fall hunting season and winter recreation (including snowmobiling and ice fishing) draw regional tourism, especially in areas such as Colton, Parishville, and Cranberry Lake.

St. Lawrence County is also home to multiple higher education institutions, including St. Lawrence University, Clarkson University, SUNY Canton, and SUNY Potsdam. These colleges and universities generate a cyclical population surge during the academic year (late August to May), which significantly impacts housing, food services, and waste generation—particularly at the beginning and end of semesters when move-in/move-out activity peaks.

Across the Planning Unit, seasonal population increases are most pronounced during the summer months (June–August), when tourism and second-home occupancy are at their highest. Based on current estimates from local tourism boards and Chambers of Commerce, summer populations can increase by 20–25%, with solid waste generation rising proportionately, particularly in service-heavy sectors such as food, lodging, and entertainment. In contrast, winter, spring, and fall seasonal variations are more sporadic and generally shorter in duration, but still contribute to localized surges in waste from recreational areas, especially during major events or holidays. Seasonal housing units, estimated to comprise 10–15% of the housing stock in some communities, contribute to these cyclical changes.

Overall, the Planning Unit’s waste management infrastructure must remain flexible to accommodate these predictable but uneven demands. Coordination with municipalities, tourism agencies, event organizers, higher education institutions, and Fort Drum remains essential to ensuring adequate service capacity, especially during high-demand periods.

1.3.1. State or Federal Parks

Jefferson County has 13 State parks and nine State forests primarily located along the St. Lawrence Seaway and Lake Ontario. There are seven State parks in Lewis County. There are 11 State parks in St. Lawrence County.

1.4. Solid Waste Management Activities

The Planning Unit’s Solid Waste Management Facility is located at 23400 County Route 177 in Rodman, NY and is the only active landfill in the Planning Unit. The landfill is permitted for 250,000 tons a year, as approved by the DEC. In the 2024 DEC annual report, the estimated landfill capacity utilized was 342,723 cubic yards of airspace. The remaining capacity of the landfill that is already constructed is 493,574 cubic yards of airspace. At roughly 225,000 tons per year, which is the typical average waste received, the remaining life of the constructed capacity is 1.5 years. In addition to the remaining capacity, the remaining permitted capacity (that is not yet constructed) is 11,645,696 cubic yards of airspace, projecting expected life remaining at a disposal rate of 225,000 tons per year of 46 years and 11 months.

The landfill accepts residential, commercial and institutional MSW, C&D debris, along with biosolids. The landfill operates under a flow control law, diverting all waste generated within Lewis, and St. Lawrence Counties to the landfill for disposal. All Planning Unit operations are done in compliance with DEC’s Part 360 regulations. Generated solid waste is transported through direct hauling from the source, and the Jefferson, Lewis, and St. Lawrence County Transfer Stations.

The Planning Unit has made consistent efforts to implement the objectives outlined in the previous Local Solid Waste Management Plan (LSWMP), with a focus on reducing waste generation,

increasing recycling and diversion rates, improving public outreach, and enhancing regional coordination. Over the past planning period, progress was made across a number of program areas, including public education, household hazardous waste collection, and support for municipal recycling programs.

A detail implementation schedule for solid waste management activities 2016-2025 is provided in Appendix A. A comprehensive review of the previous LSWMP objectives, along with a summary of implementation efforts, achievements, and any challenges encountered, is provided in Appendix B. This detailed update outlines the measurable outcomes of each objective and serves as a foundation for identifying opportunities for continued improvement in the next planning cycle.

1.4.1. Changes in the Planning Unit since the previous LSWMP

The Planning Unit members have not changed since the last LSWMP. The same towns, villages, and cities are still incorporated other than the villages of Hermon (2016), Herrings (2017), Harrisville (2018), and Morristown (2019), which were dissolved into their respective towns. The Counties do not anticipate any changes in the municipalities involved over the duration of the next ten years.

In addition, the materials recovery and program implementation has stayed the same. All transfer stations in the county have continued to operate and there are no new facilities for material collection or disposal.

Annual generated tonnage of waste has been relatively static over the past ten years, landfilling around 225,000 tons of waste each year. The Counties do not anticipate any significant changes in waste generation for the next ten years.

2. WASTE GENERATION AND MATERIALS RECOVERY DATA

2.1. Description of the Waste Stream

The Planning Unit oversees the disposal of all non-hazardous solid waste generated in Jefferson, Lewis, and St. Lawrence Counties. The waste stream can be broken down into three main categories: municipal solid waste, construction and demolition (C&D) debris, and bio-solids. Other waste stream materials include asbestos, ash (coal), ash (MSW energy recovery), oil/gas drilling waste, petroleum contaminated soil, sewage treatment plant sludge, treated regulated medical waste, and emergency authorization waste (storm debris). These categories are defined below in Table 3 - 2023-2024 Solids Waste Stream:

Material	2023 Tonnage	2024 Tonnage
MSW (commonly known as trash or garbage, includes everyday items that are discarded by the public)	144,939	145,373
Construction & Demolition Debris	32,876	27,241
Industrial Waste	23,366	15,072
Asbestos	2,160	6,375
Sewage Treatment Plant Sludge	3,358	7,802
Treated Regulated Medical Waste	88	100
Petroleum Contaminated Soil	9,906	0

Table 3 - 2023-2024 Solids Waste Stream

Municipal solid waste consists of non-recyclable and recyclable materials. All non-recyclable and non-hazardous MSW generated within the counties are hauled in and weighed through the scales system before being disposed of in the Planning Unit’s landfill. Recyclables are handled through a combination of curbside pick-up and transfer station drop-off centers and are not accepted at the Planning Unit’s landfill. Each county collects and processes their recyclables independently. C&D debris is reported separately from MSW. The Planning Unit does not have a C&D debris recycling program and disposes of material in the landfill. The landfill also accepts industrial waste, asbestos, sewage treatment plant sludge, and treated regulated medical waste from the entire Planning Unit. Although the Counties have flow control over solid waste generated, the same is not true for recyclable materials. Some industries, such as manufacturing and agriculture, choose to handle recyclables through their own reuse process. Therefore, some data may be unavailable, giving the Counties an incomplete look at the total amount of materials recycled.

2.2. Projections of MSW Generation

Over the past 5 years, the Counties have generated between 143,000 – 153,000 tons of municipal solid waste (not including recyclables) per year. Given that the population of the area has remained relatively flat and is anticipated to continue to remain flat this is not expected to increase over the next ten years, so the amount of MSW generated each year is expected to remain at approximately 147,000 tons annually. Figure 2 - 2020-2024 Composition of Waste Stream illustrates the waste stream composition:

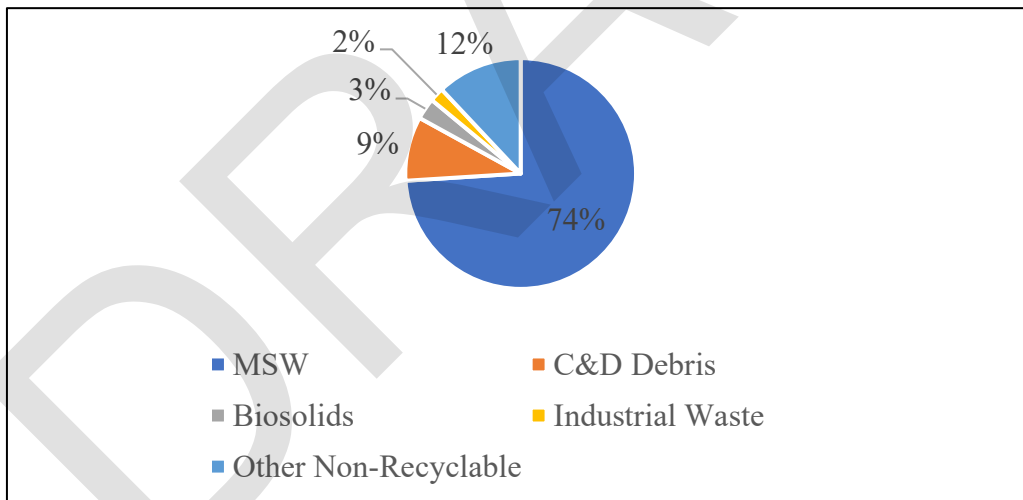


Figure 2 - 2020-2024 Composition of Waste Stream

2.3. Recyclable and Diverted Materials

A breakdown of the Planning Units recyclable and diverted material for 2023 are outlined in Table 4 - 2023 Recycled & Diverted Materials and 2024 is outlined in Table 5 - 2024 Recycled and Diverted Materials.

RECYCLED AND DIVERTED MATERIALS CY 2023 (tons)							
Recycled Materials	Jefferson County	Fort Drum (JC)	Waste Mgmt. (JC)	St. Lawrence County	Lewis County	Total	Disposal Location
Tin & Aluminum	103	0	0	0	0	103	NH Kelman Inc. (103 tons)
Mixed /Other Plastics	510	0	0	0	0	510	NH Kelman Inc. (510 tons)
Paper OCC	4,348	0	0	2,211	0	6,559	WestRock (4,348 tons) Casella – Proprietary (2,211 tons)
Mixed /Other Paper	881	0	0	73	0	954	WestRock (572 tons) NH Kelman Inc. (309 tons) Casella – Proprietary (73 tons)
Glass	192	0	0	0	0	192	DANC Beneficial Reuse (192 tons)
Single Stream Recyclables	0	1,793	1,699	5,974	2,624	12,090	Recycle America (9,464 tons) Oneida-Herkimer Solid Waste Authority (2,626 tons)
Source Separated	2113					2113	Unknown (2,113 tons)
Recycled Tons	8,147	1,793	1,699	8,258	2,624	22,521	
White Goods & Scrap Metal	442	2,174	0	292	294	3,202	Kimco Steel Sales (3,202 tons)
Textile & Other Clothing Items	15	46	0	10	2	73	St. Pauly Textiles (63 tons) Syracuse Rescue Mission (10 tons)
Tires	398	22	0	631	173	1,224	Geiter Done of WNY (1,224 tons)
Mattresses	196	26	0	89	54	365	Casella (276 tons) Triad Recycling (89 tons)
E-Waste	108	485	0	123	64	780	Kimco Steel Sales (780 tons)
Compost	734	226	0	443	55	1,458	Fort Drum Reuse (226 tons) Oneida-Herkimer Solid Waste Authority (1,232 tons)
HHW	29	485	0	60	10	584	Clean Harbors Environmental Services (584 tons)
Batteries	0	113	0	0	3	116	Kimco Steel Sales (116 tons)
Hard Cover Books	91					91	Recycle America (91 tons)
Diverted Tons	2013	3,577	0	1,648	655	7,893	
Total Tons Recycled and Diverted						30,414	

Table 4 - 2023 Recycled & Diverted Materials

RECYCLED AND DIVERTED MATERIALS CY 2024 (tons)							
Recycled Materials	Jefferson County	Fort Drum (JC)	Waste Mgmt. (JC)	St. Lawrence County	Lewis County	Total	Disposal Location
Tin & Aluminum	128	0	0	0	0	128	NH Kelman Inc. (128 tons)
Mixed /Other Plastics	523	0	0	0	0	523	NH Kelman Inc. (523 tons)
Paper OCC	4,289	0	0	0	0	4,289	WestRock (4,289 tons)
Mixed/Other Paper	519	0	0	0	0	519	WestRock (519 tons)
Glass	254	0	0	0	0	254	DANC Beneficial Reuse (254 tons)
Single Stream Recyclables	0	958	1,686	7,309	4,397	14,350	Recycle America (9,953 tons) Oneida-Herkimer Solid Waste Authority (4,397 tons)
Source Separated – Not Specified	369					369	Unknown (369 tons)
Recycled Tons	6,082	958	1,686	7,309	4,397	20,432	
White Goods & Scrap Metal	13,369	1,515	0	268	396	15,548	Kimco Steel Sales (2,613 tons) NorthStar (12,935 tons)
Textile & Other Clothing Items	314	54	0	16	299	683	St. Pauly Textiles (667 tons) Syracuse Rescue Mission (16 tons)
RECYCLED AND DIVERTED MATERIALS CY 2024 (tons)							
Tires	334	37	0	676	308	1,355	Geiter Done of WNY (1,355 tons)
Mattresses	25	15	0	26	10	75	Casella (50 tons) Triad Recycling & Energy Corp (26 tons)
E-Waste	92	19	0	65	85	261	Kimco Steel Sales (261 tons)
Compost	0	104	0	0	2,746	2,850	Fort Drum Beneficial Reuse (104 tons) Oneida-Herkimer Solid Waste Authority (2,746 tons)
HHW	41	136	0	39	14	231	Clean Harbors Environmental Services (231 tons)
Batteries	0	24	0	0	4	28	
Hard Cover Books	119					119	Recycle America (119 tons)
Diverted Tons	14,294	1,904	0	1,090	3,862	21,150	
Total Tons Recycled and Diverted						41,582	

Table 5 - 2024 Recycled and Diverted Materials

2.4. Summary of Data Gaps and Informational Needs

There are multiple data gaps and informational needs that, if addressed, could significantly improve the efficiency and accuracy of data collection and, in turn, enhance the planning process for waste diversion within the Planning Unit. Identifying and resolving these gaps is essential for making informed decisions, setting realistic goals, and evaluating program performance over time. The primary data gaps and needs include:

- Commercial and Industrial Recycling Data: There is limited information available on the volume and types of recyclable materials generated and processed by local businesses and industries, particularly those that do not use the Planning Unit’s facilities.
- Absence of a Centralized Reporting System for Recycling Programs: Currently, there is no unified, statewide database that consolidates and manages recycling data from all municipal, commercial, and institutional programs. This fragmentation in reporting systems leads to inconsistent data collection, hinders the ability to conduct comprehensive analyses, and limits the accurate assessment of overall recycling performance and sustainability outcomes across

jurisdictions. The lack of centralized reporting impairs strategic planning, resource allocation, and benchmarking efforts, making it difficult for the state and local governments to track progress toward waste diversion goals, identify underperforming areas, or recognize successful initiatives that could be replicated elsewhere. Establishing a centralized reporting framework would enhance transparency, accountability, and data-driven decision-making in support of New York’s broader sustainability and climate objectives.

Addressing these data gaps, at the State level, would improve the accuracy of the LSWMP and help ensure that waste management goals align with state-level sustainability and environmental targets. Strengthening data collection, increasing transparency, and enhancing public engagement will support more effective waste management and resource recovery strategies.

3. DESCRIPTION OF SOLID WASTE MANAGEMENT FACILITIES AND PROGRAMS

3.1. Identification of Known Facilities

There are 21 transfer stations in Jefferson County, 6 in Lewis County, and 11 in St. Lawrence, which operate for residential recyclables and waste drop-off. The transfer stations accept in-county residential municipal solid waste, construction and demolition debris, source-separated recyclables, and yard waste. The transfer stations serve as centralized facilities in areas of low population density where residents can bring waste and recyclables, which are not collected by a municipality or hauler. The transfer stations utilize a drop-off center with segmented roll-off containers for recyclable materials and includes a yard waste program for brush and yard clippings. Some transfer stations also collect white goods, tires, and e-waste. The Counties transport the recyclable materials collected at the transfer stations to their main transfer stations in Watertown, Lowville, and Ogdensburg for consolidation, prior to being sold into the recycling market. See Figure 3 - Planning Unit Transfer Stations.

MSW and C&D materials are transported to the landfill where they are weighed in through the scale system and processed for disposal. The only facility in the Planning Unit that receives waste generated outside of the county is the landfill, which has an exception to the flow control laws for beneficial waste, which requires approval from the Authority’s Executive Director. Table 6 - 2023-2024 Planning Unit Tonnage outlines the tonnage received at the landfill in 2023 and 2024. Measured tonnages are based on materials weighed through the county’s scales system and conveyed to the DEC in the Part 360 annual report.

Material	Jefferson		Lewis		St. Lawrence	
	2023 Tonnage	2024 Tonnage	2023 Tonnage	2024 Tonnage	2023 Tonnage	2024 Tonnage
MSW	75,190	76,575	12,887	12,686	56,862	56,112
C&D	23,486	16,292	4,787	5,659	4,603	5,291
Total Recycling	11,639	8,726	2,624	4,397	8,259	7,309
Bulk Metal	2,616	14,884	294	396	292	268
Electronics	244	111	123	85	67	65
Mattresses	222	40	54	10	89	26
Textiles	61	368	2	299	10	16
Tires	420	371	173	308	631	676
HHW	29	178	10	14	60	39
Compost	959	104	55	2,746	443	0

Hardcover Books	91	119	0	0	0	0
Batteries	113	24	3	4	0	0
Total Tonnage	107,875	117,792	21,883	26,604	72,003	69,802

Table 6 - 2023-2024 Planning Unit Tonnage

DRAFT

3.1.1. Planning Unit Transfer Stations

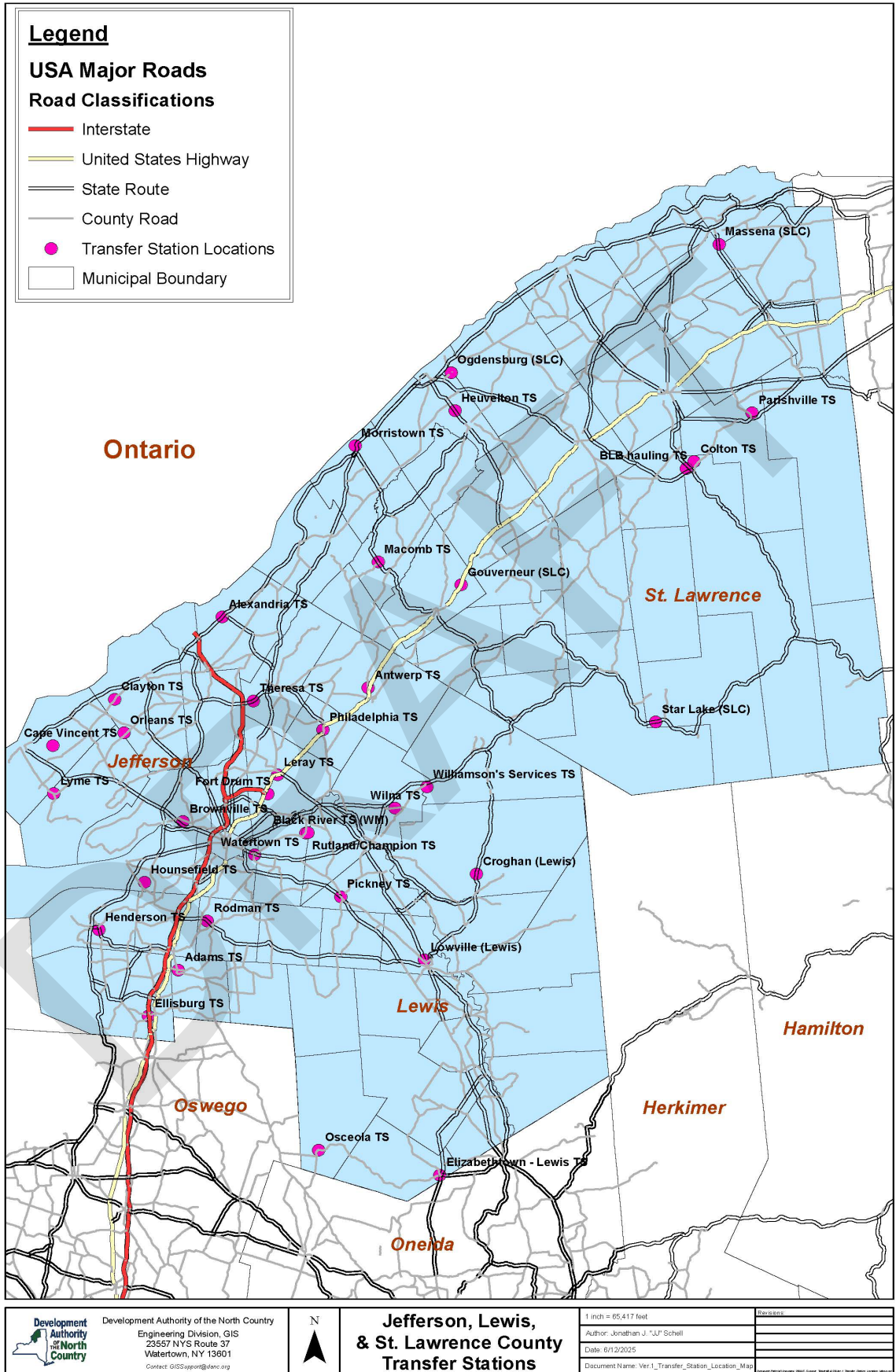


Figure 3 - Planning Unit Transfer Stations

3.2. Description of Waste Reduction, Reuse, and Recycling Program

3.2.1. Recyclables Collected and Processing

Lewis County and St. Lawrence County each participate in single stream recycling, while Jefferson County utilizes source separation. The Authority does not manage recyclables, so recycling is conducted at the county transfer stations; however, the Authority is responsible for coordinating, promoting, and overseeing waste diversion activities in the region in accordance with the LSWMP for the Planning Unit. Such responsibilities include sponsoring household hazardous waste collection events and implementing diversion programs such as hard cover book recycling.

Jefferson County asks users of its recycling area to separate recyclables into separate streams and markets the materials itself. Lewis County and St. Lawrence County collect and transport co-mingled recyclables (single stream) for processing at either the Oneida-Herkimer MRF (Lewis County) or Recycle America in Syracuse (St. Lawrence County). All of the counties also have yard waste programs, collect electronics as ewaste, and household batteries for recovery. All of the counties also separate hazardous wastes from the waste stream. Jefferson and Lewis counties also collect textiles at their transfer stations. St. Lawrence County does not have any third-party textile collection programs due to the cost of transportation, the county discontinued collecting textiles at the transfer stations in 2024, due to the economic viability of the program. County guidelines for recycling are posted to their individual websites and are outlined in Appendix C.

3.2.2. Organics Recovery

Each of the three counties have established voluntary yard waste composting and brush chipping sites at each of the transfer stations. This diversion of organic material has played a role in extending the life of the landfill and converting the material into a useable compost material that is used by the municipalities on county owned properties. Each of the Counties anticipate continuing the yard waste collection program through the next ten years. The counties understand the importance of diverting other organic material such as food scraps to help reduce the amount of waste going into the landfill. Given the expansive sizes of Jefferson, Lewis, and St. Lawrence Counties and limited funding available, it is not currently economically feasible for the counties to invest in on-site organics recovery programs.

To foster backyard composting habits across the Planning Unit, the Authority continues to promote workshops and educational resources to help residents divert organic material at their own home. The amount of organic material generated within the county does not make it economically feasible to establish an organics drop-off program, especially given the lack of close proximity to nearby facilities. The adoption of the NYS Food Donation and Food Scraps Recycling law led to approximately 1,232 tons of diversion in the three counties in 2023 and 4,832 tons in 2024.

3.2.3. Public Outreach and Education

Each of the three counties are mostly rural, which makes it challenging to engage large segments of the population through traditional methods. The Authority is committed to educating as many residents as possible on reduction, reuse, and recycling, budgeting funds and employing a full-time recycling coordinator to fulfil these commitments. The

Recycling Coordinator oversees the education and outreach programs, which consists of the following:

- Classroom Presentations
- Field Trips to the Landfill
- Tabling at Events and Fairs
- Developing and Distributing Printed Recycling Guides, Magnets & Handouts
- Social Media Campaigns
- Paid Print and Digital Advertising in Local Newspapers
- Managing the Planning Unit's Diversion Website: www.northcountryrecycles.org
- Radio Spots
- Generating Diversion Reports for Public Consumption

The goal of the education and outreach effort is to help residents identify how to properly dispose of, or recycle their items, encourage waste reduction, and establish a connection between residents and the waste that leaves their homes. Education is continuous and spread through various outlets in an effort to reach more people. In 2024, the Authority hosted nine field trips to the landfill, educating 383 visitors on the local waste streams and recycling procedures. The Recycling Coordinator also attended multiple science fairs at local elementary school and other tabling opportunities. Throughout 2024, over 500 PaintCare Recycling Pamphlets and northcountryrecycles.org magnets were distributed to the community to promote recycling guidelines.

3.2.4. Efforts to Enforce Local Disposal and Recycling Laws

In an effort to enforce local disposal and recycling laws, the recycling coordinator completes, at minimum, 10 random truck inspections. These inspections are to spot check for recyclable and prohibitive materials, and fines are occurred for any samples that contain more than 20% recyclable material. As per policy, a minimum of 10 monthly inspections are to be completed at local transfer stations across the Planning Unit. In 2024, the recycling coordinator completed 1,397 random truck inspections, resulting in \$5,723 in fines across 25 violations.

3.2.5. Volume-Based Pricing Incentives

There are no volume-based pricing incentives in the Planning Unit.

3.2.6. Recycling Markets Agreements

A stable and well-structured recycling market is a cornerstone of an effective local solid waste management system. For Jefferson, Lewis, and St. Lawrence Counties, the ability to sustain and expand recycling efforts depends heavily on the identification, development, and maintenance of reliable end markets for recovered materials. The Planning Unit recognizes that recycling markets are dynamic and subject to fluctuations in global demand, commodity pricing, and material quality requirements. These factors directly influence operational decisions and long-term planning. To ensure program continuity and maximize the value of collected recyclables, the Planning Unit works closely with both private-sector processors and regional MRFs to align collection standards with market expectations.

Recognizing the challenges associated with current market conditions, including occasional costs associated with marketing lower-value or contaminated materials, the

Planning Unit is committed to pursuing new and innovative markets. This includes exploring end-use applications in regional manufacturing, construction, and emerging industries, as well as advocating for expanded domestic processing capacity. The Planning Unit will continue to collaborate with industry stakeholders, neighboring jurisdictions, and state agencies to expand marketing options, promote product stewardship. Ongoing analysis of market performance and adaptation to industry changes will be integral to achieving long-term sustainability of the regional recycling system.

3.2.7. Local Hauler Licensing

Entities such as companies, haulers, and municipalities must obtain a MMF Waste Disposal Permit from the Authority to access disposal facilities. Permits are valid annually from April 1 through March 31 and are not prorated. Applications must be submitted with the required fees, documentation of their Part 364 permit, a Certificate of Insurance, and a completed W-9 form. Each permitted vehicle received a vehicle-specific decal upon payment of registration fees. Decals must be affixed before landfill entry and may not be transferred between vehicles. Only vehicles owned or leased by the applicant may be added to the permit, and lease agreements must be provided if applicable. License plate changes must be reported promptly, though no fee is charged for such updates.

3.2.8. Data Collection Efforts

The Authority uses data management tools such as HACH WIMS and CompuWeigh to measure, collect, and maintain data from the counties to ensure accurate and consistent data collection across the Planning Unit. Historically, data has been collected by the Authority through monthly updates provided by the county partners and Annual Reports, which are compiled and used to generate an Annual Waste Diversion Report. Starting in 2024, the Planning Unit began soliciting data from third-party recyclers in the region, to create a more accurate depiction of the diversion rate in the Planning Unit.

4. ADMINISTRATIVE AND FINANCIAL STRUCTURE

4.1. Planning Unit Organizational Charts

The Authority's Board of Directors sets policy for the Authority. The Executive Director, Chief Operating Officer, Chief Financial Officer and senior managers execute the directives of the Board of Directors. Authority staff coordinate and communicate with the counties and municipal representatives to share information, develop synergistic approaches, and facilitate long-term mutually advantageous planning or contracting. The Director of Materials Management and MMF staff are responsible for implementation of this LSWMP and specifically, the items assigned to the Authority. See Figure 4 - Authority MMF Organizational Chart.



Figure 4 - Authority MMF Organizational Chart

Jefferson, Lewis and St. Lawrence counties are governed by a Board of Legislators. The Board of Legislators develops policy and legislation for the administration and operation of the county, while the administrative staff and operating departments implement the legislature's directives.

In Jefferson County, policy and legislative development are facilitated through 15 elected Board members and three standing committees: Health and Human Services, General Services, and Finance and Rules. Solid waste items are covered by the General Services committee. The Division of Recycling and Waste Management, under the Highway Department, is responsible for implementation of this LSWMP and specifically, the items assigned to Jefferson County (see Figure 5 - Jefferson County Solid Waste Organization Chart).

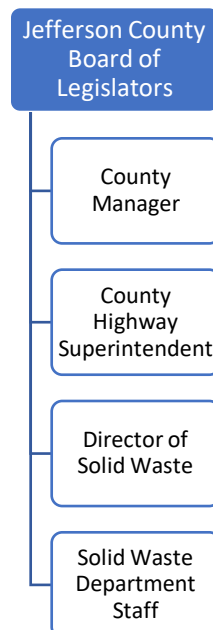


Figure 5 - Jefferson County Solid Waste Organization Chart

Lewis County has ten elected Board Members and three standing committees, General Services, Health and Human Services, and Finance and Rules. They address a variety of issues. Solid waste items are covered by the Solid Waste committee. The Solid Waste Department is responsible for implementation of this LSWMP and specifically, the items assigned to Lewis County (see Figure 6 - Lewis County Solid Waste Organizational Chart).

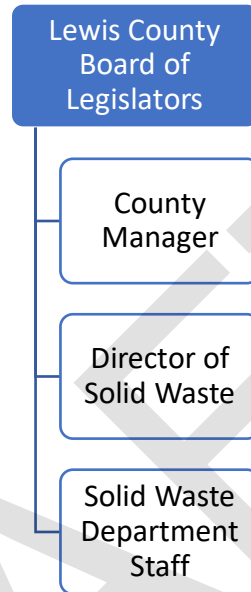
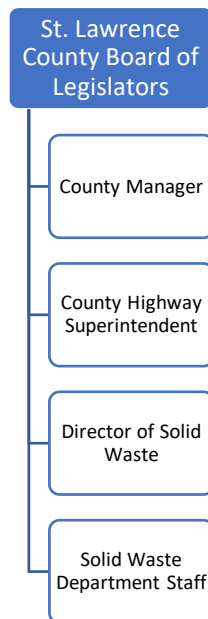


Figure 6 - Lewis County Solid Waste Organizational Chart

St. Lawrence County has 15 elected Board Members and three standing committees, Operations, Services and Finance. They address a variety of issues. Solid waste items are covered by the Finance committee. The Solid Waste Department is responsible for implementation of this LSWMP. See Figure 7 - St. Lawrence County Solid Waste Organizational Chart.



4.2. Financial Structure of the Planning Unit

The Planning Unit operates a financially self-sustaining solid waste management system designed to function without reliance on local tax subsidies. This system is based on a user-fee model, whereby waste generators are charged tipping fees according to the volume of non-recyclable waste delivered to the Planning Unit's facilities. Drop-off recyclables are free in Jefferson and Lewis counties; however, St. Lawrence charges \$70 per ton, with a \$1.00 minimum.

The financial framework of the Planning Unit is supported primarily through two revenue streams: tipping fees on non-recyclable materials charged at transfer stations and the MMF. Select recyclable materials also generate revenue at the county level. These revenues are allocated to cover the full operational and debt service costs of the solid waste management system. Additionally, they support future landfill development, post-closure care, and the ongoing operation of recycling and special waste programs, including household hazardous waste collection services. Other revenue sources for the counties include sales of recyclables, grants, and other fees. The Authority also earns revenue from sale of electricity from the landfill gas to energy facility. Other revenue sources for the municipalities may include sales of recyclables and grants. The operating budget for each of the entities covers expenses such as insurance, operations, maintenance and administration.

4.3. Laws, Regulations, or Ordinances Related to Solid Waste Management in Effect

The Planning Unit operates in adherence to the following NYS laws and local ordinances. Copies of the Planning Unit local ordinances are listed below and included in Appendix D.

- New York Consolidated Laws, General Municipal Law - GMU § 120-aa
- New York Environmental Conservation Law, Title 7- Articles 17, 27 and 37
- New York Codes, Rules and Regulations (NYCRR), Title 6 – Subchapters B & C
- Jefferson County Local Law No.1 of 2014
- Lewis County Local Law No. 3 of 2015
- St. Lawrence County Local Law No. 3 of 2008

State and local laws are enforced through a rigorous commercial user permitting process. Additionally, members of the Planning Unit regularly inspect loads entering the transfer stations and landfill for restricted material, with an escalating fine structure for violators. The landfill scans every truck entering the facility for radioactive material and follows a comprehensive radioactive management plan to manage hot loads. Finally, the Planning Unit provides regular communications to haulers and meets periodically to provide feedback on compliance issues and to training. The Materials Management Facility has several operating procedures to ensure regulatory compliance including:

- Environmental Monitoring Plan
- Facility Manual
- Greenhouse Gas Monitoring Plan
- Stormwater Pollution Prevention Plan
- Radiation Monitoring Plan
- Solid Waste Permit Requirements and Site Rules

The Planning Unit partners do not see the need to enact new laws or ordinances in order to fully implement the 2026 LSWMP.

5. ASSESSMENT AND EVALUATION OF ALTERNATIVES

5.1. Program Assessment

The Planning Unit recognizes the various alternative and supplemental programs available to manage generated materials. This section provides an objective evaluation of the alternatives in relation to the existing LSWMP and explores ways to enhance specific programs.

5.1.1. Waste Diversion Programs

<p>Summary of Status & Recommendation: Waste diversion remains the highest priority in the solid waste management hierarchy. Both manufacturers and consumers play critical roles to reduce waste generation, such as limiting packaging and avoiding non-essential materials. The Planning Unit will continue to support and advocate for local initiatives like the plastic bag ban and extended producer responsibility (EPR) programs to divert materials from landfills. In addition, the Planning Unit will promote both public and private sector waste diversion strategies, including donation centers for household goods, clothing, and food; recycling and reuse programs; and the use of sustainable packaging that reduces waste and improves recyclability.</p>
<p>Administrative/Technical Impacts:</p> <ol style="list-style-type: none"> <u>Quantitative/Qualitative Impacts on Waste Stream:</u> Select materials in the MSW stream will have lower volumes due to waste diversion programs by individual generators. <u>Types and Sizing of Facilities or Program:</u> Does not require a permanent facility operated by the Planning Unit but will vary depending on the waste generator. <u>Summary of Cost Data for Evaluation:</u> Residential waste generators are not expected to incur additional costs unless producers incorporate the expenses of EPR into the price of their products. The cost impact of EPR is difficult to quantify, as it varies depending on the type of material involved. Similarly, the feasibility and cost of industrial waste reduction programs will vary based on the specific waste stream and the nature of the generator. These industrial considerations fall outside the direct scope of the Planning Unit. <u>Impact on Natural Resource Conservation, Energy Production and, Employment:</u> Waste diversion efforts contribute to the conservation of natural resources by minimizing unnecessary waste and supporting the development of reuse and recycling programs.
<p>Jurisdictional Impacts:</p> <ol style="list-style-type: none"> <u>Interest in Participation by Neighboring Planning Units:</u> Neighboring Planning Units would possibly adopt similar messaging and regulations to establish cohesive messaging about waste diversion programs. <u>Alternatives Available with Participation by Neighboring Planning Units:</u> Not applicable as it varies by the individual waste generator. <u>Recommendations from Neighboring Planning Units:</u> None available. <u>Assessment of Environmental Justice Impacts:</u> None expected.
<p>Selected Alternatives and Program Identification</p> <ol style="list-style-type: none"> <u>Alternatives Chosen and Why:</u> see ‘Summary of Status & Recommendation’ <u>Expected Qualitative and Quantitative Impacts on:</u> <u>Waste Diversion</u> – Waste diversion programs will reduce select waste volumes; <u>Reuse</u> – Waste diversion programs will improve existing and new reuse programs to capture more material; <u>Materials Recovery</u> – Waste diversion programs will improve material recovery; <u>Participation in Recovery Opportunities</u> – Waste diversion programs will improve participation among generators <u>Product Stewardship</u> – Waste diversion programs will improve product stewardship support <u>Economic, administrative or partnership benefits</u> – Waste diversion programs will reduce program costs <u>Identification of Administrative, Contractual, and Financial Requirements for Implementation:</u> The existing infrastructure in the Planning Unit is enough to support recommended waste diversion activities. <u>Identification of New or Modified Local Laws, Ordinances, or Regulations Required for Implementation:</u> New laws or regulations are not required at this time.

Table 7 - Waste Diversion Programs

5.1.2. Reuse Programs

<p>Summary of Status & Recommendation:</p> <ul style="list-style-type: none"> Product reuse is among the most efficient forms of waste diversion, allowing items in usable condition to be recovered from the waste stream.

- Rather than establishing a new reuse collection and distribution center, the Planning Unit recommends continuing to educate residents about existing local reuse programs, such as the Salvation Army and Rescue Mission donation centers, as effective options for reusing certain products. The Planning Unit will maintain ongoing outreach efforts to promote reuse and provide information on how residents can participate in these programs.

Administrative/Technical Impacts:

1. Quantitative/Qualitative Impacts on Waste Stream: Reuse programs will reduce MSW waste volumes.
2. Types and Sizing of Facilities or Program: Establishing a separate reuse program from existing outlets would require a facility that would vary in size depending on the types of materials collected. Under the Planning Unit’s recommendation of utilizing existing reuse programs, it does not require an extra facility.
3. Summary of Cost Data for Evaluation: Residential waste generators will not bear a cost as they would be diverting waste from the waste stream.
4. Impact on Natural Resource Conservation, Energy Production and, Employment: Reuse programs save natural resources and energy as less products are replaced with new ones through reuse programs. Additional job creation is not anticipated as reuse facilities already exist.

Jurisdictional Impacts:

1. Interest in Participation by Neighboring Planning Units: Neighboring Planning Units would encourage similar messaging to establish cohesive messaging about waste reuse programs.
2. Alternatives Available with Participation by Neighboring Planning Units: Reuse programs are through individual organizations that do not rely directly on Planning Units.
3. Recommendations from Neighboring Planning Units: None available.
4. Assessment of Environmental Justice Impacts: None expected.

Selected Alternatives and Program Identification:

1. Alternatives Chosen and Why: see ‘Summary of Status & Recommendation’
2. Expected Qualitative and Quantitative Impacts on: Waste Reduction – Reuse programs reduce select waste volumes depending on the material targeted; Reuse – Reuse programs and continuing education/outreach will improve waste reuse for specific materials; Materials Recovery – Reuse programs will improve material recovery; Participation in Recovery Opportunities – Reuse programs will improve participation; Product Stewardship – No measurable impact; Economic, administrative or partnership benefits – Reuse programs will reduce disposal costs of generators
3. Identification of Administrative, Contractual, and Financial Requirements for Implementation: The existing infrastructure in the Planning Unit is enough to support recommended waste reuse activities.
4. Identification of New or Modified Local Laws, Ordinances, or Regulations Required for Implementation: New laws or regulations are not required at this time.

Table 8 - Reuse Programs

5.1.3. Recyclable Recovery Programs for Paper, Metal, Glass, and Textiles

Summary of Status & Recommendation:

- Counties in the Planning Unit will continue to operate recycling programs independently, with Jefferson County utilizing source separation, and Lewis and St. Lawrence Counties will utilize single stream recycling.
- In addition to the curbside collection of paper, aluminum and tin cans, plastic bottles and tubs, and glass containers, the Planning Unit will continue to encourage residents to utilize local textile donation centers to remove textiles from the waste stream. However, several other local outlets for textile recycling exist and residents are encouraged to bring textiles to the St. Pauly donation boxes located at the transfer stations or other community drop off boxes.
- The Planning Unit will continue to review and edit the mandatory recycling list to reflect current markets and demands.

Administrative/Technical Impacts:

1. Quantitative/Qualitative Impacts on Waste Stream: Improved recycling efforts can divert recyclables from the waste stream and decrease contamination in the recycling stream.
2. Types and Sizing of Facilities or Program: Transfer stations are sufficient in supporting the collection and processing of common curbside recyclables.
3. Summary of Cost Data for Evaluation: Recycling will not have a cost to the waste generator. However, the counties in the Planning Unit will continue to incur operational and maintenance costs related to their transfer stations, which are built into the budget projections each year.
4. Impact on Natural Resource Conservation, Energy Production and, Employment: Recycling helps conserve natural resources. Energy production and additional job opportunities outside of the current operations are not expected.

Jurisdictional Impacts:

1. Interest in Participation by Neighboring Planning Units: Work with neighboring Planning Units to adopt similar messaging to establish cohesive messaging about recycling programs.
2. Alternatives Available with Participation by Neighboring Planning Units: Recycling program is not dependent on neighboring Planning Units under the current system.
3. Recommendations from Neighboring Planning Units: None available.

4. Assessment of Environmental Justice Impacts: None expected.

Selected Alternatives and Program Identification:

1. Alternatives Chosen and Why: Single-stream recycling can increase participation by simplifying the process for consumers, as it requires less sorting at the source. It may also reduce collection costs by minimizing the need for multiple trucks or compartmentalized collection systems. However, this approach shifts the burden to the processing stage, requiring more advanced machinery and technology to sort materials and remove contaminants. As a result, single-stream recycling often involves higher processing and operational costs and tends to have increased contamination rates. Both single stream and source separated recycling methods have strengths and weaknesses, and the counties within the Planning Unit will continue to use the collection methods that they are comfortable with.
2. Expected Qualitative and Quantitative Impacts on: Waste Reduction – Recycling programs reduce select waste volumes depending on materials targeted; Reuse – Continued education is expected to improve diversion for specific materials; Materials Recovery – Diversion programs improve material recovery; Participation in Recovery Opportunities – Recycling programs and education improves participation; Product Stewardship – No measurable impact; Economic, administrative or partnership benefits – Recycling program costs are associated with contamination
3. Identification of Administrative, Contractual, and Financial Requirements for Implementation: The existing infrastructure in the Planning Unit is enough to support recommended recycling activities.
4. Identification of New or Modified Local Laws, Ordinances, or Regulations Required for Implementation: New laws or regulations are not required at this time but will be reviewed in the upcoming years to stay consistent with current recycling markets.

Table 9 - Recyclable Recovery Programs

5.1.4. Organics Recovery Programs

Summary of Status & Recommendation:

- The Planning Unit will continue its yard waste collection program and implement backyard composting workshops to encourage further organics recovery.

Administrative/Technical Impacts:

1. Quantitative/Qualitative Impacts on Waste Stream: Encouraging backyard composting through workshops, as well as through education and outreach will divert organic material from the waste stream.
2. Types and Sizing of Facilities or Program: Existing yard waste collection at transfer stations is sufficient. Promoting at-home composting will not require a composting site from the Planning Unit.
3. Summary of Cost Data for Evaluation: Composting will likely have a reduced cost to the waste generator.
4. Impact on Natural Resource Conservation, Energy Production and, Employment: Composting organic waste helps conserve natural resources. Energy production from landfill gas may decrease slightly as more organics are diverted from the landfill. Additional job opportunities outside of the current operations are not expected.

Jurisdictional Impacts:

1. Interest in Participation by Neighboring Planning Units: Neighboring Planning Units would encourage similar messaging to establish cohesive messaging about recycling programs.
2. Alternatives Available with Participation by Neighboring Planning Units: None available.
3. Recommendations from Neighboring Planning Units: None available.
4. Assessment of Environmental Justice Impacts: None expected.

Selected Alternatives and Program Identification:

1. Alternatives Chosen and Why: The Planning Unit recognizes the importance of diverting other organic material outside of yard waste using alternative technologies such as anaerobic digestion and aerated composting piles. With no alternatives, the Planning Unit will focus on education and outreach to teach residents how to process organic materials at home.
2. Expected Qualitative and Quantitative Impacts on: Waste Reduction – Reduce organic waste through backyard composting programs; Reuse – Expected to increased due to continued education; Materials Recovery – Improve material recovery; Participation in Recovery Opportunities – Improve participation; Product Stewardship – No measurable impact; Economic, administrative or partnership benefits – Composting can reduce costs to generators
3. Identification of Administrative, Contractual, and Financial Requirements for Implementation: The existing infrastructure in the Planning Unit is enough to support current recommended composting activities, which consists of yard wastes
4. Identification of New or Modified Local Laws, Ordinances, or Regulations Required for Implementation: New laws or regulations are not required at this time.

Table 10 - Organics Recovery Programs

5.1.5. Programs to Develop or Improve Local and Regional Markets

<p>Summary of Status & Recommendation:</p> <ul style="list-style-type: none"> The Planning Unit will continue to work with organizations such as the DEC, Solid Waste Association of North America, and the NYS Association for Reduction, Reuse and Recycling in order to research and develop local recycling markets for recyclable materials. The Planning Unit will continue to educate the public and haulers, promoting the importance of clean, non-contaminated recycling.
<p>Administrative/Technical Impacts:</p> <ol style="list-style-type: none"> <u>Quantitative/Qualitative Impacts on Waste Stream:</u> Improved and expanded local recycling markets will lead to increase opportunities for recycling efforts. <u>Types and Sizing of Facilities or Program:</u> A facility or other infrastructure is not required. <u>Summary of Cost Data for Evaluation:</u> Currently, the costs associated with recycling markets are built into the recycling program. No other costs are anticipated. <u>Impact on Natural Resource Conservation, Energy Production and, Employment:</u> Building local recycling markets helps conserve natural resources by cutting transportation-related greenhouse gas emissions and generates job opportunities within the community.
<p>Jurisdictional Impacts:</p> <ol style="list-style-type: none"> <u>Interest in Participation by Neighboring Planning Units:</u> Enhancing and expanding recycling material markets will boost recycling rates by streamlining operations and transactions, ultimately making the entire recycling process more efficient and accessible for all stakeholders. <u>Alternatives Available with Participation by Neighboring Planning Units:</u> It is not dependent on neighboring Planning Units. <u>Recommendations from Neighboring Planning Units:</u> None available. <u>Assessment of Environmental Justice Impacts:</u> None expected.
<p>Selected Alternatives and Program Identification:</p> <ol style="list-style-type: none"> <u>Alternatives Chosen and Why:</u> See ‘Summary Status & Recommendation’ <u>Expected Qualitative and Quantitative Impacts</u> on waste reduction, reuse, materials recovery, participation in recovery opportunities, product stewardship and economic/administrative or partnership benefits are difficult to predict. <u>Identification of Administrative, Contractual, and Financial Requirements for Implementation:</u> The existing infrastructure in the Planning Unit is enough to support waste reduction activities. <u>Identification of New or Modified Local Laws, Ordinances, or Regulations Required for Implementation:</u> New laws or regulations are not required at this time.

Table 11 - Programs to Develop or Improve Local and Regional Markets

5.1.6. Enforcement Programs

<p>Summary of Status & Recommendation:</p> <ul style="list-style-type: none"> The Planning Unit will continue to utilize the recycling coordinator to ensure compliance of recycling and prohibitive waste regulations. When appropriate, the recycling coordinator will continue to distribute fines to those violating such regulations. The counties also enforce regulations through fines within the waste and recycling system. To ensure proper material collection, the Planning Unit issues fines to haulers who deliver prohibited items to the landfill or whose recycling loads contain excessive contamination. These fines serve as an incentive for haulers to educate their customers on proper disposal practices and recycling guidelines to help prevent future violations.
<p>Administrative/Technical Impacts:</p> <ol style="list-style-type: none"> <u>Quantitative/Qualitative Impacts on Waste Stream:</u> Enforcement programs will increase the amount of recoverable material in the MSW stream and divert them from the landfill. <u>Types and Sizing of Facilities or Program:</u> A facility or other infrastructure is not required. <u>Summary of Cost Data for Evaluation:</u> No additional costs are anticipated. <u>Impact on Natural Resource Conservation, Energy Production and, Employment:</u> Enforcement programs will lead to natural resource conservation, energy production and employment.
<p>Jurisdictional Impacts:</p> <ol style="list-style-type: none"> <u>Interest in Participation by Neighboring Planning Units:</u> Enhancing and expanding recycling material markets will boost recycling rates by streamlining operations and transactions, ultimately making the entire recycling process more efficient and accessible for all stakeholders. <u>Alternatives Available with Participation by Neighboring Planning Units:</u> It is not dependent on neighboring Planning Units. <u>Recommendations from Neighboring Planning Units:</u> None available. <u>Assessment of Environmental Justice Impacts:</u> None expected.

Selected Alternatives and Program Identification:

1. Alternatives Chosen and Why: See ‘Summary of Status & Recommendation’
2. Expected Qualitative and Quantitative Impacts on: Waste Reduction – Enforcement expected to reduce waste volumes. Increased focus on waste composition and prohibitive materials will force haulers to be more aware of the contents of their loads, leading them to restrict such materials, which will lead to a reduction in volume; Reuse – Enforcement expected to improve reuse; Materials Recovery – Enforcement expected to improve material recovery; Participation in Recovery Opportunities – Through increased, enforcement actions like issuing fines for receipt of recyclable materials at the landfill, haulers will be financially incentivized to improve participation; Product Stewardship – No measurable impact; Economic, administrative or partnership benefits – Enforcement expected to reduce program expenses.
3. Identification of Administrative, Contractual, and Financial Requirements for Implementation: The existing infrastructure in the Planning Unit is enough to support waste reduction activities.
4. Identification of New or Modified Local Laws, Ordinances, or Regulations Required for Implementation: New laws or regulations are not required at this time.

Table 12 - Enforcement Programs

5.1.7. Incentive-Based Pricing

Summary of Status & Recommendation:

- The Planning Unit operates an effective economic incentive program through a Pay-As-You-Throw (PAYT) system at its transfer stations. Under this system, residents are charged for disposing of waste destined for the landfill, creating a financial incentive to reduce waste. Recycling is offered free of charge in both Jefferson and Lewis Counties, while St. Lawrence County provides a reduced recycling rate of \$70 per ton. These programs encourage residents to recycle more and minimize household waste generation.

Administrative/Technical Impacts:

1. Quantitative/Qualitative Impacts on Waste Stream: PAYT system encourages recycling as a free alternative in Jefferson and Lewis County and as a discounted alternative in St. Lawrence County, leading to more recyclables captured.
2. Types and Sizing of Facilities or Program: No new infrastructure is not required.
3. Summary of Cost Data for Evaluation: No additional costs are anticipated.
4. Impact on Natural Resource Conservation, Energy Production and Employment: PAYT encourages recycling and promotes natural resource conservation. Energy production and additional employment is not anticipated.

Jurisdictional Impacts:

1. Interest in Participation by Neighboring Planning Units: Not dependent on other Planning Units.
2. Alternatives Available with Participation by Neighboring Planning Units: It is not dependent on neighboring Planning Units.
3. Recommendations from Neighboring Planning Units: None available.
4. Assessment of Environmental Justice Impacts: None expected.

Selected Alternatives and Program Identification:

1. Alternatives Chosen and Why: See ‘Summary of Status & Recommendation’
2. Expected Qualitative and Quantitative Impacts on: Waste Reduction – Incentive programs expected to reduce waste volumes; Reuse – Incentive programs expected to improve reuse; Materials Recovery – Incentive programs expected to improve material recovery; Participation in Recovery Opportunities – Incentive programs expected to improve participation; Product Stewardship – No measurable impact; Economic, administrative or partnership benefits – No measurable impact.
3. Identification of Administrative, Contractual, and Financial Requirements for Implementation: The existing infrastructure in the Planning Unit is enough to support waste reduction activities.
4. Identification of New or Modified Local Laws, Ordinances, or Regulations Required for Implementation: New laws or regulations are not required at this time.

Table 13 - Incentive Programs

5.1.8. Education and Outreach

Summary of Status & Recommendation:

- Education and outreach serve as vital links between residents and the Planning Unit’s waste and recycling programs, helping to ensure the collection of high-quality, low-contamination materials. The Planning Unit will continue to engage residents and businesses through a mix of social media, presentations, community events, local partnerships, and advertising. Outreach efforts focus on waste reduction through prevention—such as encouraging consumers to influence brands by choosing products with recyclable or minimal packaging, as well as promoting the Planning Unit’s recycling programs and encouraging reuse through donation or upcycling.

<ul style="list-style-type: none"> The Planning Unit will continue to implement a variety of public education initiatives, within budgetary limits, to improve the current waste diversion rate. These efforts will include targeted campaigns focused on specific recyclable materials such as cardboard and plastic.
<p>Administrative/Technical Impacts:</p> <ol style="list-style-type: none"> <u>Quantitative/Qualitative Impacts on Waste Stream:</u> Improved education efforts can divert recyclables and prohibited items from the waste stream as well as decrease contamination in the recycling stream. <u>Types and Sizing of Facilities or Program:</u> No new infrastructure is not required. <u>Summary of Cost Data for Evaluation:</u> No additional costs are anticipated. <u>Impact on Natural Resource Conservation, Energy Production and, Employment:</u> Education will ideally lead to natural resource conservation. Energy production and additional employment are not anticipated.
<p>Jurisdictional Impacts:</p> <ol style="list-style-type: none"> <u>Interest in Participation by Neighboring Planning Units:</u> Sharing information with neighboring Planning Units will help public understanding of solid waste management within and across communities. <u>Alternatives Available with Participation by Neighboring Planning Units:</u> It is not dependent on neighboring Planning Units. <u>Recommendations from Neighboring Planning Units:</u> None available. <u>Assessment of Environmental Justice Impacts:</u> None expected.
<p>Selected Alternatives and Program Identification:</p> <ol style="list-style-type: none"> <u>Alternatives Chosen and Why:</u> See ‘Summary Status & Recommendation’ <u>Expected Qualitative and Quantitative Impacts on:</u> <u>Waste Reduction</u> – Education programs expected to reduce waste volumes; <u>Reuse</u> – Education programs expected to improve reuse; <u>Materials Recovery</u> – Education programs expected to improve material recovery; <u>Participation in Recovery Opportunities</u> – Education programs expected to improve participation; <u>Product Stewardship</u> – No measurable impact; <u>Economic, administrative or partnership benefits</u> – Education programs expected to reduce operational costs. <u>Identification of Administrative, Contractual, and Financial Requirements for Implementation:</u> The existing infrastructure in the Planning Unit is enough to support waste reduction activities. <u>Identification of New or Modified Local Laws, Ordinances, or Regulations Required for Implementation:</u> New laws or regulations are not required at this time.

Table 14 - Education and Outreach Programs

5.1.9. Data Collection and Evaluation

<p>Summary of Status & Recommendation:</p> <ul style="list-style-type: none"> The Planning Unit is responsible for collecting data and conducting evaluations of the landfill, transfer stations, and third-party recyclers to support the development of an efficient and fiscally responsible solid waste management plan. The Planning Unit will consider conducting a business survey to evaluate the recycling practices of local businesses and industries, including those not utilizing the Planning Unit’s facilities. This initiative will expand upon existing recycling data to gain a more complete understanding of all solid waste and recyclable materials generated within the Planning Unit. Establishing a centralized reporting framework would enhance transparency, accountability, and data-driven decision-making in support of New York’s broader sustainability and climate objectives.
<p>Administrative/Technical Impacts:</p> <ol style="list-style-type: none"> <u>Quantitative/Qualitative Impacts on Waste Stream:</u> Data collection will allow for better tracking of waste and recyclables in the waste stream. <u>Types and Sizing of Facilities or Program:</u> No new software is required outside of the existing scale management system. <u>Summary of Cost Data for Evaluation:</u> No additional costs are anticipated. <u>Impact on Natural Resource Conservation, Energy Production and, Employment:</u> No impact
<p>Jurisdictional Impacts:</p> <ol style="list-style-type: none"> <u>Interest in Participation by Neighboring Planning Units:</u> Sharing data information with neighboring Planning Units will help understanding of solid waste movement. <u>Alternatives Available with Participation by Neighboring Planning Units:</u> Not dependent on neighboring Planning Units. <u>Recommendations from Neighboring Planning Units:</u> None available. <u>Assessment of Environmental Justice Impacts:</u> None expected.
<p>Selected Alternatives and Program Identification:</p> <ol style="list-style-type: none"> <u>Alternatives Chosen and Why:</u> See ‘Summary Status & Recommendation’ <u>Expected Qualitative and Quantitative Impacts on:</u> <u>Waste Reduction</u> – Data collection programs expected to reduce waste volumes; <u>Reuse</u> – Data collection programs expected to improve reuse; <u>Materials Recovery</u> – Data collection programs expected to improve material recovery; <u>Participation in Recovery Opportunities</u> – Data collection programs expected to reduce operational costs; <u>Product Stewardship</u> – No measurable impact; <u>Economic, administrative or partnership benefits</u> – Education programs expected to reduce operational costs. <u>Identification of Administrative, Contractual, and Financial Requirements for Implementation:</u> The existing infrastructure in the Planning Unit is enough to support waste reduction activities.

4. Identification of New or Modified Local Laws, Ordinances, or Regulations Required for Implementation: New laws or regulations are not required at this time.

Table 15 - Data Collection and Evaluation Programs

5.1.10. Local Hauler Licensing & Flow Control

<p>Summary of Status & Recommendation:</p> <ul style="list-style-type: none"> Continue to require waste generators and haulers to obtain a permit before waste disposal. Continue to enforce flow control legislation for all non-recyclable and non-hazardous solid waste coming through the Planning Unit's landfill. While the flow control legislation controls solid waste headed to the landfill, it does not cover recyclables. Maintain enforcement and inspection of materials entering transfer stations and the landfill to prevent prohibited items and recyclables from entering the waste stream, while providing education to haulers and residents to enhance diversion rates.
<p>Administrative/Technical Impacts:</p> <ol style="list-style-type: none"> <u>Quantitative/Qualitative Impacts on Waste Stream</u>: Hauler licensing and flow control of waste requires all waste generated within the Planning Unit to come to the Planning Unit's facility for disposal. This does not include recyclable materials. <u>Types and Sizing of Facilities or Program</u>: No new infrastructure is required. <u>Summary of Cost Data for Evaluation</u>: No additional costs are anticipated. <u>Impact on Natural Resource Conservation, Energy Production and, Employment</u>: No impact.
<p>Jurisdictional Impacts:</p> <ol style="list-style-type: none"> <u>Interest in Participation by Neighboring Planning Units</u>: Not dependent on neighboring Planning Units. <u>Alternatives Available with Participation by Neighboring Planning Units</u>: Not dependent on neighboring Planning Units. <u>Recommendations from Neighboring Planning Units</u>: None available. <u>Assessment of Environmental Justice Impacts</u>: None expected.
<p>Selected Alternatives and Program Identification:</p> <ol style="list-style-type: none"> <u>Alternatives Chosen and Why</u>: Private and municipal haulers provide garbage and recycling collection throughout the Planning Unit, which will continue to require waste haulers to obtain a permit before disposal and enforce flow control legislation for non-recyclable and non-hazardous solid waste. <u>Expected Qualitative and Quantitative Impacts on:</u> <u>Waste Reduction</u> – Hauler licensing and flow control expected to reduce waste volumes; <u>Reuse</u> – Hauler licensing and flow control expected to improve reuse; <u>Materials Recovery</u> – Hauler licensing and flow control expected to improve material recovery; <u>Participation in Recovery Opportunities</u> – Hauler licensing and flow control expected to improve participation; <u>Product Stewardship</u> – No measurable impact; <u>Economic, administrative or partnership benefits</u> – Hauler licensing and flow control expected to reduce operational costs. <u>Identification of Administrative, Contractual, and Financial Requirements for Implementation</u>: The existing infrastructure in the Planning Unit is enough to support waste reduction activities. <u>Identification of New or Modified Local Laws, Ordinances, or Regulations Required for Implementation</u>: New laws or regulations are not required at this time.

Table 16 - Local Haulers Licensing & Flow Control

5.1.11. C&D Debris Reduction

<p>Summary of Status & Recommendation:</p> <ul style="list-style-type: none"> The Planning Unit is not considering its own C & D recycling or deconstruction programs at this time.
<p>Administrative/Technical Impacts:</p> <ol style="list-style-type: none"> <u>Quantitative/Qualitative Impacts on Waste Stream</u>: C&D diversion by the private sector would reduce waste sent to the landfill; however, it is not a viable option at this time. <u>Types and Sizing of Facilities or Program</u>: Existing infrastructure would be sufficient at this time based on current recommendations. <u>Summary of Cost Data for Evaluation</u>: No additional costs are anticipated. <u>Impact on Natural Resource Conservation, Energy Production and, Employment</u>: No impact on Planning Unit. The private sector that invests in this will have a positive impact on natural resource conservation, energy production, and employment.
<p>Jurisdictional Impacts:</p> <ol style="list-style-type: none"> <u>Interest in Participation by Neighboring Planning Units</u>: Not dependent on neighboring Planning Units. <u>Alternatives Available with Participation by Neighboring Planning Units</u>: Not dependent on neighboring Planning Units. <u>Recommendations from Neighboring Planning Units</u>: None available. <u>Assessment of Environmental Justice Impacts</u>: None expected.
<p>Selected Alternatives and Program Identification:</p> <ol style="list-style-type: none"> <u>Alternatives Chosen and Why</u>: The Planning Unit does not have a C & D debris recycling program in place, despite the potential for the reuse and recycling for many of the materials. The Planning Unit will continue to look for alternative technologies available and encourage local businesses to separate materials at the source for reuse.

2. Expected Qualitative and Quantitative Impacts on: Waste Reduction – Expected to reduce waste volumes in the private sector; Reuse – Expected to improve reuse in the private sector; Materials Recovery – Expected to improve material recovery in the private sector; Participation in Recovery Opportunities – Expected to improve participation in the private sector; Product Stewardship – No measurable impact; Economic, administrative or partnership benefits – Expected to reduce operational costs in the private sector.
3. Identification of Administrative, Contractual, and Financial Requirements for Implementation: The existing infrastructure in the Planning Unit is enough to support waste reduction activities.
4. Identification of New or Modified Local Laws, Ordinances, or Regulations Required for Implementation: New laws or regulations are not required at this time.

Table 17 - C&D Debris Reduction Programs

5.1.12. Private Sector Management and Coordination

<p>Summary of Status & Recommendation:</p> <ul style="list-style-type: none"> • The Planning Unit aims to establish partnerships with local businesses to enhance data collection and tracking of recyclable materials. Many items such as textiles, electronic waste, business-generated cardboard, thin film plastics, deposit containers, and tires are often recycled outside of the Planning Unit’s solid waste facilities. Improved collaboration will help provide a more accurate picture of overall recycling activity within the region.
<p>Administrative/Technical Impacts:</p> <ol style="list-style-type: none"> 1. <u>Quantitative/Qualitative Impacts on Waste Stream:</u> Waste diversion and tracking by the private sector will reduce waste sent to the landfill. 2. <u>Types and Sizing of Facilities or Program:</u> Existing infrastructure is sufficient at this time based on current recommendations. 3. <u>Summary of Cost Data for Evaluation:</u> No additional costs are anticipated. 4. <u>Impact on Natural Resource Conservation, Energy Production and, Employment:</u> No impact on Planning Unit. The private sector that invests in waste reduction opportunities will have a positive impact on natural resource conservation, energy production, and employment.
<p>Jurisdictional Impacts:</p> <ol style="list-style-type: none"> 1. <u>Interest in Participation by Neighboring Planning Units:</u> Not dependent on neighboring Planning Units. 2. <u>Alternatives Available with Participation by Neighboring Planning Units:</u> Not dependent on neighboring Planning Units. 3. <u>Recommendations from Neighboring Planning Units:</u> None available. 4. <u>Assessment of Environmental Justice Impacts:</u> None expected.
<p>Selected Alternatives and Program Identification:</p> <ol style="list-style-type: none"> 1. <u>Alternatives Chosen and Why:</u> See ‘Summary of Status & Recommendation’ 2. <u>Expected Qualitative and Quantitative Impacts on: Waste Reduction</u> – Expected to reduce waste volumes in the private sector; <u>Reuse</u> – Expected to improve reuse in the private sector; <u>Materials Recovery</u> – Expected to improve material recovery in the private sector; <u>Participation in Recovery Opportunities</u> – Expected to improve participation in the private sector; <u>Product Stewardship</u> – No measurable impact; <u>Economic, administrative or partnership benefits</u> – Expected to reduce operational costs in the private sector. 3. <u>Identification of Administrative, Contractual, and Financial Requirements for Implementation:</u> The existing infrastructure in the Planning Unit is enough to support waste reduction activities. 4. <u>Identification of New or Modified Local Laws, Ordinances, or Regulations Required for Implementation:</u> New laws or regulations are not required at this time.

Table 18 - Private Sector Management and Coordination

5.1.13. Alternative Waste Disposal Options

<p>Summary of Status & Recommendation:</p> <ul style="list-style-type: none"> • The Planning Unit reaffirms to reduce, reuse, and recycle as much of the waste stream that is feasible and to landfill the remainder in an environmentally secure public landfill. • The Planning Unit will pursue landfill cell expansion as necessary. • The Planning Unit will continue to run the landfill, recycling, yard waste, and transfer station operations.
<p>Administrative/Technical Impacts:</p> <ol style="list-style-type: none"> 1. <u>Quantitative/Qualitative Impacts on Waste Stream:</u> Continued efforts to promote reducing, reusing, and recycling will divert materials from the landfill and extend its life. 2. <u>Types and Sizing of Facilities or Program:</u> Existing infrastructure is sufficient at this time based on current recommendations. 3. <u>Summary of Cost Data for Evaluation:</u> Continuation of tipping fees is anticipated to provide sufficient funding for program costs. 4. <u>Impact on Natural Resource Conservation, Energy Production and, Employment:</u> Promoting waste reduction will provide natural resource conservation.
<p>Jurisdictional Impacts:</p> <ol style="list-style-type: none"> 1. <u>Interest in Participation by Neighboring Planning Units:</u> Not dependent on neighboring Planning Units.

2. Alternatives Available with Participation by Neighboring Planning Units: Not dependent on neighboring Planning Units.
3. Recommendations from Neighboring Planning Units: None available.
4. Assessment of Environmental Justice Impacts: None expected.

Selected Alternatives and Program Identification:

1. Alternatives Chosen and Why: In addition to landfilling, several alternative waste disposal technologies are available, including waste-to-energy.
2. Expected Qualitative and Quantitative Impacts on: Waste Reduction – Expected to reduce waste volumes; Reuse – Expected to improve reuse; Materials Recovery – Expected to improve material recovery; Participation in Recovery Opportunities – Expected to improve participation; Product Stewardship – No measurable impact; Economic, administrative or partnership benefits – No expected reduction to operational costs.
3. Identification of Administrative, Contractual, and Financial Requirements for Implementation: The existing infrastructure in the Planning Unit is enough to support waste reduction activities.
4. Identification of New or Modified Local Laws, Ordinances, or Regulations Required for Implementation: New laws or regulations are not required at this time.

Table 19 - Alternative Waste Disposal Options

6. IMPLEMENTATION PLAN AND SCHEDULE

Several planned program enhancements are already underway and will continue to expand in the coming years. The implementation schedule will be reviewed regularly to ensure goals are met efficiently and cost-effectively, with adjustments made as new information and resources become available. Program strategies are grouped and outlined below, with the Implementation Schedule detailing tasks, responsible parties, milestones, and timelines included in Appendix E.

6.1. Detailed Implementation Schedule

1. **LSWMP**
 - a. Finalize new LSWMP
 - b. Carryout goals of LSWMP during 2025-2034
2. **Solid Waste Operations**
 - a. Landfill and manage solid waste from the Planning Unit
 - b. Expand existing landfill capacity for future solid waste disposal
 - c. Collect methane from landfill through landfill gas to energy plant
 - d. Utilize transfer stations to collect residential waste and recyclables
 - e. Submit annual reports
 - f. Monitor solid waste management program
3. **Recycling Program**
 - a. Continue to process recyclables
 - b. Market recyclables
 - c. Analyze recycling markets
 - d. Review local recycling law
 - e. Improve recycling tracking and reporting
 - f. Evaluate current recycling program
4. **Organics Management**
 - a. Continue current yard waste programs
 - b. Expand organic diversion to include backyard composting
 - c. Explore other organics diversion programs
5. **Education and Outreach**
 - a. Increase Recycling Participation and Lower Contamination Rates
6. **Special Recycling Programs**
 - a. Continue special recycling programs
 - b. Research financial opportunities to support recycling programs
 - c. Expand partnerships and collaborations for special recycling programs

- d. Support State and Federal legislation
- 7. **Partnerships**
 - a. Increase hauler participation
 - b. Identify sources of contamination
 - c. Increase recycling awareness
 - d. Stay involved in local, statewide, and national conversations regarding solid waste management

7. **WASTE STREAM PROJECTIONS**

Appendix F provides annual projections from 2025 to 2034 for MSW and C&D waste generated and diverted, categorized by material type. The projections reflect an overall decline in waste requiring disposal, driven by improved data collection, expanded outreach, and targeted public education campaigns. The tables in Appendix F have been created using the NYSDEC’s Population and MSW Composition Calculator and Demolition Debris Calculator. They present projections for the quantity and composition of MSW and Construction & Demolition Debris generated within the Planning Unit. Figure 8 - MSW Material Composition illustrates the types of MSW expected from 2025 to 2034. Figure 9 - MSW Generated vs. MSW Diverted shows the gap between materials generated and those diverted, highlighting opportunities for increased diversion. The Planning Unit will continuously assess the effectiveness of diversion and data collection efforts. Updates and program improvements will be included in biennial compliance reports submitted to the DEC.

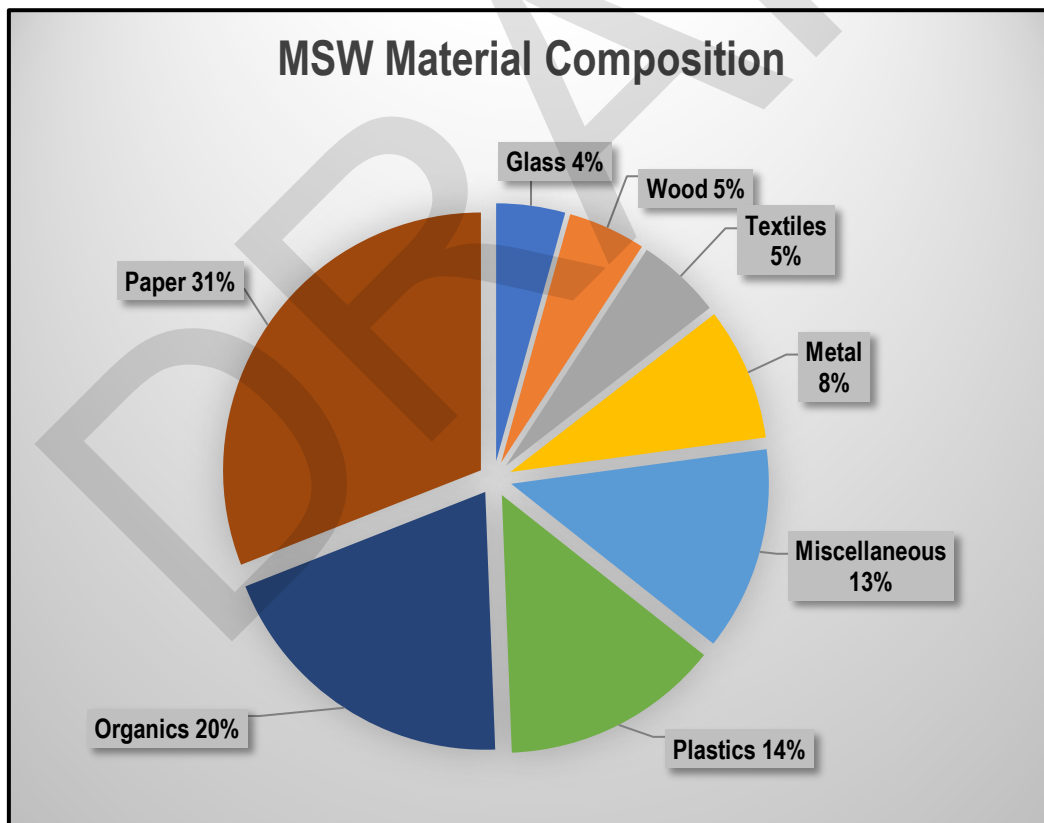


Figure 8 - MSW Material Composition

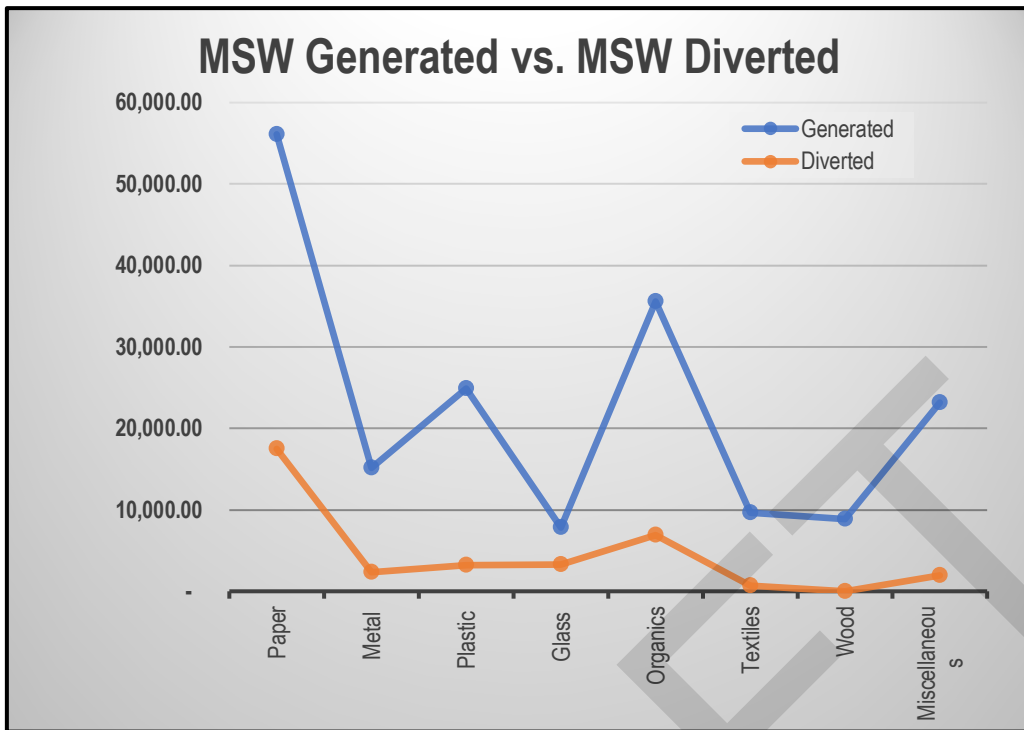


Figure 9 - MSW Generated vs. MSW Diverted

8. PUBLIC PARTICIPATION & RESPONSIVENESS SUMMARY

NOTE: This section will be added after the comment period is complete.

9. RESOLUTION ADOPTING THE LSWMP

NOTE: This section will be added after the plan is approved by the Planning Unit partners.

DRAFT

APPENDICES

Appendix A – 2016-2025 Implementation Schedule

DRAFT

Program strategy	Year										
	2016 1	2017 2	2018 3	2019 4	2020 5	2021 6	2022 7	2023 8	2024 9	2025 10	
1.) Evaluate solid waste diversion opportunities and efforts in the planning unit	Continue to review alternatives for waste diversion through reuse, recycling - Ongoing Goal								Promote additional waste diversion opportunities by meeting with county partners, and Fort Drum 6 times per year	Evaluate opportunity to add PaintCare drop off locations within Jefferson, Lewis and St. Lawrence Counties	Evaluate other opportunities to add recycling options to 3-county region to increase convenience for residents and therefore volume of material collected
2.) Evaluate the transfer stations and waste hauler inspection program	Evaluate the effectiveness of the private hauler inspection program						Develop and implement necessary changes	The Authority has discontinued the Recycling Compliance Officer Position. The responsibility of recycling compliance is the responsibility of the Counties and the transfer stations and haulers that they oversee. The Authority continues to use random weekly load inspections to enforce compliance. The Authority uses their NexGen computer software to generate work orders (WO) to inspect incoming loads. Ten (10) random WOs are generated weekly for the inspection of MSW loads. Landfill operators have the necessary experience and are trained to make these determinations. They have the capability to enter their observation and analysis of the load in their I-Pad as the MSW is being offloaded. MMF Supervisory staff review the operator's data entered in the WO and take corrective action as necessary			
3.) Waste Hauler and Transfer Station Attendant training programs	Provide training to transfer station attendants and to waste haulers on an ongoing annual basis. The training will be evaluated annually to ensure that it meets all regulations and requirements and to ensure that the training remains effective					Conduct annual hauler training at landfill					
4.) Increase diversion of agricultural plastics from the waste stream	Initiate diversion program throughout the planning unit							The Authority is discontinuing this diversion effort and will leave it to the private market to develop. The Authority is committed to reinstating this program if it can be done in an environmental and economically friendly manner. The Authority will evaluate the local options and market conditions annually to determine if this program can be resumed			
5.) Increase diversion of construction & demolition debris from the waste stream	Plan and establish practical C&D waste diversion goals							The Authority is discontinuing this diversion effort and will leave it to the private market to develop. The Authority is committed to reinstating this program if it can be done in an environmental and economically friendly manner. The Authority will evaluate the local options and market conditions annually to determine if this program can be resumed			
6.) Identify and evaluate potential opportunities for mattress recycling or diversion	Rollout program to all three counties and evaluate						Re-evaluate program due to un-sustainability	The Authority sold the RTS in Harrisville NY to GeiterDone of WNY in an effort to create a private, local option to manage hard to recycle materials like mattresses. The Authority will adjust their strategy related to mattresses based upon changes prompted by the NYSWMP			

7.) Increase the diversion of organics from the waste stream	New York State is implementing new regulations that will dictate how organics are diverted. The Authority will continue to monitor the implementation of these new regulations and assist its partners with implementation. This will continue to remain as a goal for the planning unit									
8.) Provide backyard composting	Provide education and outreach about the benefits of back yard composting									
9.) Promote food waste composting	Provide technical assistance and funding as available to develop additional programs with in the planning unit					Implement lunchroom composting program at Authority owned facilities				
10.) Complete a waste composition study to evaluate programmatic needs	1 Study & Report completed					1 Study & Report completed	3 Studies completed	2 Studies completed	2 Studies completed	1 Study completed and one scheduled
11.) Establish uniform Authority-approved Single Stream Recycling Decal for use on recycling bins	Provide decals to transfer station and private haulers for dissemination					Decals continue to be distributed				
12.) Develop recycling palm cards for distribution at recreational facilities, businesses, and hotels	Disseminate to hotels, resorts, etc. in the planning unit					Re-focus program to disseminate information through northcountryrecycle.org and social media; generating paper palm card to disseminate increases materials that will be disposed of; electronic format for material dissemination is the preferred strategy going forward				
13.) Work with industry and businesses to develop greater accountability for waste and recyclables	This is an ongoing annual objective. Continue to reach out to commercial and industrial business units to encourage participation in the regional planning unit reporting activities; also continue to maintain social media accounts as necessary to encourage participation by all age groups									
14.) Evaluate ongoing education and outreach programs	Continue to develop educational methods such as TV commercials, mailings, and school programs to further increase recycling and diversion to the maximum extent possible. Further develop partnerships and cooperatives with in the planning unit to achieve local goals for recycling and diversion					Continue to promote waste diversion initiatives through advertising (budget minimum of \$15k annually)				
	Outreach events = 1 per month. Page views = 1,000 per month.					Page views = 986 per month	Page views = 500 per month	1 site visit for educational tour per month Page views = 450 per month	1 site visit for educational tour per month Page views = 550 per month 1 Community outreach event per quarter	
15.) Staff training and development for	Send staff to NYSASWM and NYSAR conferences annually to network and learn of additional opportunities									

onsite inspections and landfill compliance	Create a training program for compliance staff performing onsite hauler inspections; provide education and training to landfill equipment operators relative to the identification of unacceptable materials, and waste diversion goals for the Authority	Develop SOP for inspections, institute process to complete annual report summarizing findings and complete annual training	Implement and adjust annually to ensure compliance with NYSDEC Part 360 permit requirements and Authority policies; adjust as necessary and provide updated training to ensure compliance
16.) Financial incentives for recycling	Create financial incentives to increase recycling and waste diversion activities in the planning unit, as appropriate; assess the ongoing needs of the planning unit, on an individual county basis, and offer financial support for the implementation of local programs, development of infrastructure, and the establishment of rebates, as appropriate	This program was evaluated, and it was determined that the money being allocated to this program could be more efficiently used in other diversion opportunities. The program was discontinued effective December 31, 2022	
17.) Establish an enforcement program to increase compliance with Authority recycling and waste diversion goals	The program was restructured in June of 2020. The counties have been tasked with the responsibility of enforcement and compliance at their transfer stations. The Authority is increasing the number of inspections and analysis of waste coming into the landfill so it can identify the source of and material types that are entering the waste stream that could be recycled. Waste composition studies and recycling inspection results will be used to enforce permit requirements and targeted educational outreach		
18.) Product Stewardship	Work with the NYS Product Stewardship Council in coordinating and participating product stewardship initiatives locally and regionally; this includes working with County and State governments to encourage support for Legislative actions that support product stewardship		
19.) Tire Recycling	Assist Counties with tire recycling program. Evaluate effectiveness of program, costs and green directives	The Authority sold the RTS in Harrisville NY to GeiterDone of WNY in an effort to create a private, local option to manage hard to recycle materials like tires. The Authority will adjust their strategy related to tires based upon future regulations and environmental directions	
20.) Single stream RTS Regional Transfer Station	Establish a permitted site to consolidate regionally generated Single Stream material		Program was evaluated and determined not to be cost effective. The Property was sold to a private company with the goal of processing hard to recycle items like tires, mattresses, etc. This will no longer be reported in our biennial updates
21.) Promote additional recycling of hard cover books	Entered into a IMA with North Country Library Systems to recycle hard cover books		Continue to promote and support recycling of hard cover books
22.) Promote additional removal of household hazardous waste from waste stream	Implement 5 HHW collection events in the Planning Unit		

23.) Education public on importance of waste diversion and landfill air space

Hold bi-annual Open House with tours and educational information

Hold bi-annual Open House with tours and educational information

DRAFT

Appendix B – 2016-2025 Summary of Implementation efforts and Achievements

DRAFT

Goal #1

Program Strategy: Evaluate solid waste diversion opportunities and efforts in the Planning Unit

Goal: Promote additional waste diversion opportunities by meeting with county partners, and Fort Drum 6 times per year

Progress towards Goal:

1. Meet with Jefferson, Lewis and St. Lawrence counties six times each year (February, April, June, August, October, and December).

Additional Opportunities to Further this Goal:

1. Fort Drum is not actively participating in Partner Meetings. Either integrate FD into the existing meetings or identify another venue to meet with FD to discuss additional waste diversion opportunities.

2. Is FD continuing to recycle their mattresses? If so, are we capturing their data?

Goal was met in 2023, 2024, and is on track for successful completion by 12/31/2025

Goal at risk for not completing by 12/31/2025.

Goal NOT on Track for completing by 12/31/2025.

Additional efforts needed to get back on track identified above.

Goal determined by Management to not be relevant and no further efforts will be taken.

Goal #2

Program Strategy: Transfer stations and waste hauler inspection program

Goal: Continue to complete and document inspections on-site, and periodic transfer station inspections

Progress towards Goal:

1. 645 inspections completed of waste haulers at the landfill in 2023.

2. 191 inspections completed of the transfer stations during 2024.

3. 1,397 inspections completed of waste haulers at the landfill in 2024.

4. 27 recyclable violations flagged. \$9,618.88 surcharges applied

Additional Opportunities to Further this Goal:

1. To work with individual haulers with repeat violations to figure out the root cause of the issue and come up with some solutions.

2. Reallocate a camera to look into the back of the trucks as they roll across the scale to spot violations before they reach the landfill.

Goal was met in 2023, 2024, and is on track for successful completion by 12/31/2025

Goal at risk for not completing by 12/31/2024.

Goal NOT on Track for completing by 12/31/2025.

Additional efforts needed to get back on track identified above.

Goal determined by Management to not-be relevant and no further efforts will be taken.

Goal #3

Program Strategy: Waste Hauler and Transfer Station Attendant training programs

Goal: Conduct annual hauler training at landfill

Progress towards Goal:

1. Conducted Waste Hauler meetings, with training in April 2023, April and November 2024, and scheduled for November 2025. November training focused on changes to the hauler permit requirements.

Additional Opportunities to Further this Goal:

1. Revamp training material Q3 of 2024

2. Schedule training in Q4 of 2024

Goal was met in 2023, 2024, and is on track for successful completion by 12/31/2025

Goal at risk for not completing by 12/31/2025.

Goal NOT on Track for completing by 12/31/2025.

Additional efforts needed to get back on track identified above.

Goal determined by Management to not be relevant and no further efforts will be taken.

Goal #4

Program Strategy: Increase diversion of agricultural plastics from the waste stream

Goal: The Authority is committed to reinstating this program if it can be done in an environmental and economically friendly manner. The Authority will evaluate the local options and market conditions annually to determine if a program can be developed to address ag-plastics and boat plastic wraps.

Progress towards Goal:

1. Investigation into the economic feasibility of recycling ag-plastic continued throughout the year. Reached out to the Syracuse University Center for Sustainability Community Solutions and Cornell Cooperative Extension of Jefferson County Agricultural teams to look for opportunities and any programs.
2. Reached out to five companies (Indigo Plastics, Central States Recycling, Blackridge Investments Huntington, Banyan Plastics, and NH Kelman Inc) to see if there is a market for ag-plastic.
3. Feedback from the industry experts is that there is not an economically viable market for recycling ag plastic.
4. Developed relationships with this network that will keep the Authority plugged in if things change.

Additional Opportunities to Further this Goal:

1. There are no additional opportunities at this time. Just a periodic review to see if anything has changed.

Goal was met in 2023, 2024, and is on track for successful completion by 12/31/2025

Goal at risk for not completing by 12/31/2025.

Goal NOT on Track for completing by 12/31/2025.

Additional efforts needed to get back on track identified above.

Goal determined by Management to not be relevant and no further efforts will be taken.

Goal #5

Program Strategy: Increase diversion of construction & demolition debris from the waste stream

Goal: The Authority sold the RTS in Harrisville NY to Geiter Done of WNY in an effort to create a private, local option to manage hard to recycle materials like C&D. The Authority will adjust their strategy related to C&D based upon changes prompted by the New York State Solid Waste Management Plan (NYSWMP).

Progress towards Goal:

1. Monthly meetings with Syracuse University Center for Sustainability Community Solutions team and regional subject matter experts to advance initiative
2. Discussion with Purcell Construction about clean wood diversion, DEC commented that virgin construction lumber could not be used as organic composting due to the chemicals used in the lumber manufacturing process.
3. Discussion with Alcoa about clean wood diversion (100-200 tons annually) DEC commented that virgin construction lumber could not be used as organic composting due to the chemicals used in the lumber manufacturing process.
4. Engaged all county partners to inquiry about reuse of these materials but was unsuccessful.

Additional Opportunities to Further this Goal:

1. None of the county partners will accept these materials for reuse and Fort Drum has asked about a NYS DEC waiver to accept it without effecting their current permitting, which prevents them from accepting material from outside the base

2. Engaged the local composting community but none are interested due to chemicals used during curing of treated lumber

- Goal on track for successful completion by 12/31/2024
- Goal at risk for not completing by 12/31/2024.
- Goal NOT on Track for completing by 12/31/2024.
 - Additional efforts needed to get back on track identified above.
 - Goal determined by Management to not be relevant and no further efforts will be taken.

Goal #6

Program Strategy: Identify and evaluate potential opportunities for mattress recycling or diversion
Goal: The Authority sold the RTS in Harrisville NY to Geiter Done of WNY in an effort to create a private, local option to manage hard to recycle materials like mattresses. The Authority will adjust their strategy related to mattresses based upon changes prompted by the NYSWMP.

Progress towards Goal:

1. Meeting with Casella about continuing mattress recycling opportunities in the North Country
2. Geiter Done of WNY sold the RTS property in the spring. Since the Authority had not budgeted for mattress recycling in FY2025, the program was dis-continued and mattresses returned to the landfill. April 2024
3. Met a company called Renewable Recycling, Inc. They are a mattress recycling firm from Long Island. They presented a proposal to direct haul mattresses from the transfer stations to their facility (similar to the structure of the previous program). The counties would absorb the cost of the agreements with Renewable Recycling. None of the counties were interested in pursuing further discussion on the topic. June 2024

Additional Opportunities to Further this Goal:

1. Continue to touch base with Renewable Recycling, Inc and Cassella about changes in the market to make it enticing to open a mattress recycling operation in the North Country.

- Goal on track for successful completion by 12/31/2025
- Goal at risk for not completing by 12/31/2025.
- Goal NOT on Track for completing by 12/31/2025.
 - Additional efforts needed to get back on track identified above.
 - Goal determined by Management to not be relevant and no further efforts will be taken.

Goal #7

Program Strategy: Increase the diversion of organics from the waste stream
Goal: New York State is implementing new regulations that will dictate how organics are diverted. The Authority will continue to monitor the implementation of these new regulations and assist its partners with implementation. This will continue to remain as a goal for the Planning Unit.

Progress towards Goal:

1. Met with Hannaford, Price Chopper and Wal Mart to discover that all three businesses already donate their excess food to local food banks. Food scraps are sent to two companies who specialize in collecting food scrap waste.
2. Submitted FOIL request to NYSDEC for food scraps reporting on August 2024 and on May 2025
3. Receive Food Scraps Data for the Planning Unit and created a Food Scraps Report that was shared with the community

Additional Opportunities to Further this Goal:

1. Explore food waste reduction and organic recycling opportunities with school districts.
2. Develop a resource group with (CSCS, CET, Compost for Good and Clarkson) for local businesses and entrepreneurs interested in organics recycling.

- Goal was met in 2023, 2024, and is on track for successful completion by 12/31/2025

- Goal at risk for not completing by 12/31/2025.
- Goal NOT on Track for completing by 12/31/2025.
 - Additional efforts needed to get back on track identified above.
 - Goal determined by Management to not be relevant and no further efforts will be taken.

Goal #8

Program Strategy: Provide backyard composting
 Goal: Provide education and outreach about the benefits of back yard composting.

Progress towards Goal:

1. Provided educational outreach on backyard composting at area Farmers Markets June, July 2023
2. Co-hosted webinar with Cornell Cooperative Extension of Jefferson County in May. There were 20 registered participants from Jefferson County May 2024
3. Partnering with Syracuse University CSCS and Compost for Good to create backyard workshop in August 2024 and September 2025
4. Monthly NYSAR Organics Council Meeting beginning in August 2024

Additional Opportunities to Further this Goal:

1. Continue to support educational opportunities through Cornell Cooperative, Clarkson University, Compost for Good, CET and CSCS.

- Goal was met in 2023, 2024, and is on track for successful completion by 12/31/2025
- Goal at risk for not completing by 12/31/2025.
- Goal NOT on Track for completing by 12/31/2025.
 - Additional efforts needed to get back on track identified above.
 - Goal determined by Management to not be relevant and no further efforts will be taken.

Goal #9

Program Strategy: Promote food waste composting
 Goal: Continue to promote food waste composting through educational outreach and advertising

Progress towards Goal:

1. Provided educational outreach on backyard composting at area Farmers Markets June, July 2023
2. Online webinar in May, working with North Country Composting group to educate, as well as to identify new entrepreneurs. Meeting with large scale generators in all 3 counties May 2024
3. Working with a group of entrepreneurs and academia to present a roundtable discussion on Municipal Composting August 2024
4. Discussed hosting November roundtable for schools with Compost for Good, Clarkson, and Syracuse CSCS September 2024
5. Partnered with Carthage High School to source reoccurring wood chips source for their composting operation April 2025

Additional Opportunities to Further this Goal:

1. Continue to support educational opportunities through Cornell Cooperative, Clarkson University, Compost for Good, CET and CSCS.

- Goal was met in 2023, 2024, and is on track for successful completion by 12/31/2025
- Goal at risk for not completing by 12/31/2025.
- Goal NOT on Track for completing by 12/31/2025.

- Additional efforts needed to get back on track identified above.
- Goal determined by Management to not be relevant and no further efforts will be taken.

Goal #10

Program Strategy: Complete a waste composition study (WCS) to evaluate programmatic needs
 Goal: Two Studies Planned; Results will be incorporated into Report

Progress towards Goal:

1. MMF Waste Composition Study March 2024
2. Finalized March 2024 Waste Composition Study Report June 2024
3. Jefferson Co waste composition study July 2024
4. MMF Waste Composition Study October 2024
5. MMF Waste Composition Study March 2025
6. _____

Additional Opportunities to Further this Goal:

1. Generate Jefferson County report utilizing Stony Brook WCS data from 2021-2024, comparing results from MMF WCS data
2. Expand recycling audits to St Lawrence and Lewis Counties.

- Goal was met in 2023, 2024, and is on track for successful completion by 12/31/2025
- Goal at risk for not completing by 12/31/2025.
- Goal NOT on Track for completing by 12/31/2025.
 - Additional efforts needed to get back on track identified above.
 - Goal determined by Management to not be relevant and no further efforts will be taken.

Goal #11

Program Strategy: Establish uniform Authority-approved Single Stream Recycling Decal for use on recycling bins
 Goal: Continue to review and update materials annually.

Progress towards Goal:

1. Completed decal draft and sent for pricing quotes July 2024
2. Order placed on 8/26, with a 2-3 week delivery August 2024
3. Order received and barrels were finalized September 2024

Additional Opportunities to Further this Goal:

1. Created a recycling decal for barrels donated by Slack Chemical for loan to area schools and special events.

- Goal was met in 2023, 2024, and is on track for successful completion by 12/31/2025
- Goal at risk for not completing by 12/31/2025.
- Goal NOT on Track for completing by 12/31/2025.
 - Additional efforts needed to get back on track identified above.
 - Goal determined by Management to not be relevant and no further efforts will be taken.

Goal #12

Program Strategy: Develop recycling palm cards for distribution at recreational facilities, businesses, and hotels
 Goal: Disseminate to hotels, resorts, etc. in the Planning Unit

Progress towards Goal:

1. Continuing to work through old stock at community outreach and HHW events January 2024
2. Updated the palm card August 2024
3. Reprinted updated cards June 2025

Additional Opportunities to Further this Goal:

1. During annual review look for ways to improve the look and design of the information. Better ways to distribute the information.

- Goal was met in 2023, 2024, and is on track for successful completion by 12/31/2025
- Goal at risk for not completing by 12/31/2025.
- Goal NOT on Track for completing by 12/31/2025.
 - Additional efforts needed to get back on track identified above.
 - Goal determined by Management to not be relevant and no further efforts will be taken.

Goal #13

Program Strategy: Work with industry and businesses to develop greater accountability for waste and recyclables
 Goal: This is an ongoing annual objective. Continue to reach out to commercial and industrial business units to encourage participation in the regional Planning Unit reporting activities; also continue to maintain social media accounts as necessary to encourage participation by all age groups.

Progress towards Goal:

1. Participated in local Farmers markets providing educational material to the public on recycling June-July 2023
2. Met with Carthage Area Hospital to set up a battery recycling program May 2024
3. Created a joint letter to the haulers reminding of NYS Law on recycling June 2024
4. This will tighten the inspection criteria. Met with Hannaford, Price Chopper and Wal Mart to discover that all three businesses already donate their excess food to local food banks. Food scraps are sent to two companies who specialize in collecting food scrap waste. Met with Watertown July 2024
5. Presented recommendations to revamp the prohibitive waste inspection process August 2024

Additional Opportunities to Further this Goal:

1. Meet with the school districts to introduce recycling opportunities and education.
2. Use the Food Scraps designated generator list as a tool to target commercial entities for education and compliance on recycling.

- Goal was met in 2023, 2024, and is on track for successful completion by 12/31/2025
- Goal at risk for not completing by 12/31/2025.
- Goal NOT on Track for completing by 12/31/2025.
 - Additional efforts needed to get back on track identified above.
 - Goal determined by Management to not be relevant and no further efforts will be taken.

Goal #14

Program Strategy: Evaluate ongoing education and outreach programs
 Goal: 1 educational tour/ month
 Page views = 450 per month

Progress towards Goal:

1. Recycling Poster contest with Sherman Elementary January 2024
2. Page views February 2024 - 3,081 page views
3. Page views March 2024 - 741 page views
4. Earth Day events - Sustainability poster contest awards ceremony April 2024
5. Clothing swap at Watertown High school. May 23rd tour May 2024

6. Field trip - Met with General Brown School. Discussed their recycling program, and how to help support the schools recycling efforts. June 2024
7. Page views July 1,007 page views
8. Helped Calcium school develop a compost education presentation August 2024
9. Meet with Beaver River Schools to introduce recycling barrel program and discuss other ways the Authority can support their recycling efforts. August 2024
10. Educational Tours hosted: (Goal 12) 2024 - 9 tours 359 visitors 2025 4 tours 89 visitors

Additional Opportunities to Further this Goal:

1. Develop a marketing pamphlet that explains the tour program.
2. Expand the tours to other community groups and organizations that can meet the criteria (such as insurance and transportation)

- Goal on track for successful completion by 12/31/2025
- Goal at risk for not completing by 12/31/2025.
- Goal NOT met in 2023 or 2024. Personnel turnover in the Recycling program was the primary contributor.
 - Additional efforts needed to get back on track identified above.
 - Goal determined by Management to not be relevant and no further efforts will be taken.

Goal #15

Program Strategy: Staff training and development for onsite inspections and landfill compliance

Goal: This program was evaluated, and it was determined that the money being allocated to this program could be more efficiently used in other diversion opportunities. The program was discontinued effective December 31, 2022

Progress towards Goal:

1. Sustainability training completed July 2023 and June 2024
2. Annual review and update (as necessary) the Recyclables & Prohibitive Waste SOP August 2023 & 2024

Additional Opportunities to Further this Goal:

1. Weekly recap at morning operations meeting so MMF staff hear the results of their efforts.

- Goal was met in 2023, 2024, and is on track for successful completion by 12/31/2025
- Goal at risk for not completing by 12/31/2025.
- Goal NOT on Track for completing by 12/31/2025.
 - Additional efforts needed to get back on track identified above.
 - Goal determined by Management to not be relevant and no further efforts will be taken.

Goal #16

Program Strategy: Financial incentives for recycling

Goal: This program was evaluated, and it was determined that the money being allocated to this program could be more efficiently used in other diversion opportunities. The program was discontinued effective December 31, 2022.

Progress towards Goal:

1. Working with Syracuse University Center for Sustain-ability Community Solutions, NYSAR, and other regional subject matter experts to increase grant knowledge and to assist partners and local community secure funding January 2024
2. Met with NCLS to discuss DEC Grants August 2024
3. Submitted for NYSAR Grant for reuse August 2024

Additional Opportunities to Further this Goal:

1. Investigate EPA grant opportunities
2. Become a local clearinghouse for information on recycling grant opportunities.

- Goal was met in 2023, 2024, and is on track for successful completion by 12/31/2025
- Goal at risk for not completing by 12/31/2025.
- Goal NOT on Track for completing by 12/31/2025.
- Additional efforts needed to get back on track identified above.
 - Goal determined by Management to not be relevant and no further efforts will be taken.

Goal #17

Program Strategy: Establish an enforcement program to increase compliance with Authority recycling and waste diversion goals

Goal: The program was restructured in June of 2020. The counties have been tasked with the responsibility of enforcement and compliance at their transfer stations. The Authority is increasing the number of inspections and analysis of waste coming into the landfill so it can identify the source of and material types that are entering the waste stream that could be recycled. Waste composition studies and recycling inspection results will be used to enforce permit requirements and targeted educational outreach

Progress towards Goal:

1. Recycling Audits April 2024 – Gouv – 20; Ogd – 13
2. Partner (Lewis, St Lawrence, FT Drum) one-on-one meets to discuss waste diversion data
3. Recycling Audits May 2024 – Ogd – 10
4. Partner (Lewis, St Lawrence, FT Drum) one-on-one meets to discuss waste diversion data
5. Recycling Audits June 2024 – Gouv – 10; Ogd – 10
6. Partner (Lewis, St Lawrence, FT Drum) one-on-one meets to discuss waste diversion data
7. Recycling Audits July 2024 – Jeff Cty - 13
8. Partner (Lewis, St Lawrence, FT Drum) one-on-one meets to discuss waste diversion data
9. Recycling Audits August 2024- Ogdensburg-5,Massena –17, Gouverneur-8
10. Partner (Lewis, St Lawrence, FT Drum) one-on-one meets to discuss waste diversion data
11. Recycling Audits September 2024- Ogdensburg-20, Lowville – 5

Additional Opportunities to Further this Goal:

1. Expand County transfer station audits to take place every other month during County one-on-one visits.
2. Provide training and support to transfer station staff to conduct independent recycling audits.

- Goal was met in 2023, 2024, and is on track for successful completion by 12/31/2025
- Goal at risk for not completing by 12/31/2025.
- Goal NOT on Track for completing by 12/31/2025.
- Additional efforts needed to get back on track identified above.
 - Goal determined by Management to not be relevant and no further efforts will be taken.

Goal #18

Program Strategy: Product Stewardship

Goal: Work with the NYS Product Stewardship Council in coordinating and participating product stewardship initiatives locally and regionally; this includes working with County and State governments to encourage support for Legislative actions that support product stewardship

Progress towards Goal:

1. Joined NYSARRR Legislative Committee January 2024

2. The legislative is finalizing talking points and draft communications which Municipal leaders can use to encourage passing legislation on Plastic and mattress ERP. Latest version of documentation will be received by EoM July 2024
3. Follow-up with NYSAR Legislative Committee for ERP documentation August 2024
4. Recycling Coordinator elected to NYSRRR Board of Directors April 2025

Additional Opportunities to Further this Goal:

1. Expand our work with NYSRRR ReUse committee to identify and grow a cottage reuse industry in the North Country

- Goal was met in 2023, 2024, and is on track for successful completion by 12/31/2025
- Goal at risk for not completing by 12/31/2025.
- Goal NOT on Track for completing by 12/31/2025.
 - Additional efforts needed to get back on track identified above.
 - Goal determined by Management to not be relevant and no further efforts will be taken.

Goal #19

Program Strategy: Tire Recycling

Goal: The Authority will adjust their strategy related to tires based upon future regulations and environmental directions.

Progress towards Goal:

1. Transfer stations in all three counties have tire recycling. Tires are not accepted at the Landfill January 2024

Additional Opportunities to Further this Goal:

1. Explore opportunities with businesses to develop a local tire recycling.

- Goal was met in 2023, 2024, and is on track for successful completion by 12/31/2025
- Goal at risk for not completing by 12/31/2025.
- Goal NOT on Track for completing by 12/31/2025.
 - Additional efforts needed to get back on track identified above.
 - Goal determined by Management to not be relevant and no further efforts will be taken.

Goal #20

Program Strategy: Single-stream RTS Regional Transfer Station

Goal: Program was evaluated and determined not to be cost effective. This will no longer be reported in our biennial updates.

Progress towards Goal:

1. NA

Additional Opportunities to Further this Goal:

1. NA

- Goal on track for successful completion by 12/31/2025
- Goal at risk for not completing by 12/31/2025.
- Goal NOT on Track for completing by 12/31/2025.
 - Additional efforts needed to get back on track identified above.
 - Goal determined by Management to not be relevant and no further efforts will be taken.

Goal #21

Program Strategy: Promote additional recycling of hard cover books
Goal: Continue to promote and support recycling of hard cover books

Progress towards Goal:

1. Added three St Lawrence County transfer stations to the list of stops for the Library system to pick up books for de-binding March 2024
2. Added Lewis County (Croghan) to the list of stops for the Library system to pick up books for de-binding April 2024
3. Added Clarkson University to the list of stops for the Library system to pick up books for de-binding May 2024
4. Attended NCLS Events at their main office to promote recycling October 2024
5. Participated in NCLS annual book swap April 2025

Additional Opportunities to Further this Goal:

1. Explore opportunities to incorporate school system books into the recycling process.

- Goal was met in 2023, 2024, and is on track for successful completion by 12/31/2025
- Goal at risk for not completing by 12/31/2025.
- Goal NOT on Track for completing by 12/31/2025.
- Additional efforts needed to get back on track identified above.
 - Goal determined by Management to not be relevant and no further efforts will be taken.

Goal #22

Program Strategy: Promote additional removal of HHW from waste stream
Goal: Implement 5 HHW collection events in the Planning Unit

Progress towards Goal:

1. St. Lawrence County HHW event - 27,962 lbs. (collected) May 2024
2. Jefferson County HHW event - 38,550 lbs. (collected) Coordinated large volume collection training for St Lawrence and Lewis Counties June 2024
3. 1st Thursday - St Lawrence County latex paint collection 3rd Thursday; Lewis County latex paint collection August 2024
4. Lewis & Jefferson County HHW events; 1st Thursday - St Lawrence County latex paint collection; 3rd Thursday - Lewis County latex paint collection September 2024
5. St Lawrence County HHW event - 1st Thursday - St Lawrence County latex paint collection; 3rd Thursday - Lewis County latex paint collection October 2024
6. 1st Thursday - St Lawrence County latex paint collection; 3rd Thursday - Lewis County latex paint collection November 2024
7. 1st Thursday - St Lawrence County latex paint collection; 3rd Thursday - Lewis County latex paint collection - December 2024

Additional Opportunities to Further this Goal:

1. Establish paint collection days for each county with PaintCare
2. Work with Green Sheen to host Paint Only collect events in each County

- Goal was met in 2023, 2024, and is on track for successful completion by 12/31/2025
- Goal at risk for not completing by 12/31/2025.
- Goal NOT on Track for completing by 12/31/2025.
- Additional efforts needed to get back on track identified above.
 - Goal determined by Management to not be relevant and no further efforts will be taken.

Goal #23

Program Strategy: Educate public on importance of waste diversion and landfill air space
Goal: Hold bi-annual Open House with tours and educational information

Progress towards Goal:

1. Open House schedule for August 28th 2025

Additional Opportunities to Further this Goal:

1. Develop a road program to educate the public on landfill operations and recycling

- Goal was met in 2023, 2024, and is on track for successful completion by 12/31/2025
- Goal at risk for not completing by 12/31/2025.
- Goal NOT on Track for completing by 12/31/2025.
 - Additional efforts needed to get back on track identified above.
 - Goal determined by Management to not be relevant and no further efforts will be taken.

Goal #24

Program Strategy: Increase collaboration and outreach with the six colleges and schools that exist within the Planning Unit to improve waste diversion initiatives

Goal: Develop programs to increase waste diversion such as furniture collection/ donation at the end of academic years

Progress towards Goal:

1. After Clarkson's Take it or Leave event in April, assisted the University with donating excess clothing to St Pauley May 2024
2. August 28th clothing swap event at Beaver River Central School August 2024
3. August 29th clothing swap event at Watertown High School August 2024
4. Science Fair at Wilson Elementary School April 2025
5. Science Fair at General Brown Elementary School May 2025
6. Lewis County Legislature Tour of MMF May 2025

Additional Opportunities to Further this Goal:

1. During clothing swap events, add school supplies.
2. Get invited to the University Sustainability festivals to promote the landfill and recycling programs.

- Goal was met in 2023, 2024, and is on track for successful completion by 12/31/2025
- Goal at risk for not completing by 12/31/2025.
- Goal NOT on Track for completing by 12/31/2025.
 - Additional efforts needed to get back on track identified above.
 - Goal determined by Management to not be relevant and no further efforts will be taken.

Appendix C – Combined Recycling Guidelines

DRAFT



Recycling

Acceptable Items at the Jefferson County Transfer Station

Plastic

Bottles, Containers & Tubs with 1-7

- No Styrofoam (even with symbol)
- No automotive oil containers
- No plastic bags
- Containers should be empty & rinsed



Glass

Bottles & Jars (No need to separate by colors)

- Containers should be empty & rinsed
- No windows, plate glass, mirrors, broken glass
- No dishes and drinking glasses
- No ceramic dishes, clay pots, etc
- No light bulbs



Metal

Tin food cans

Aluminum food & beverage cans

Aluminum pans and foil

- Containers should be empty and rinsed



Mixed Paper

Office & copier paper

Junk mail and envelopes

Newspaper

Magazines & catalogues

Shredded paper

Telephone books

Paperback books—No hardcover books

- No paper cups, plates, tissue & toilet paper
- No hardcover books unless cover removed
- No carbon paper



Lightweight Cardboard

Cereal & Food Boxes



Cardboard

Corrugated cardboard boxes

Paper grocery bags

- No wax, plastic, styrofoam or metal coatings

Rechargeable Batteries: *Nickel-cadmium, Lead Acid, Lithium Ion, Nickel Metal Hydride*
 Electronic Equipment: *TVs, Computers, Monitors, VCRs, DVRs, Keyboards, Mice, Fax Machines, Printers, Scanners, Cable or Satellite Receivers, Video Game Consoles*

White Goods-----Scrap Metal

For more information visit our website: www.co.jefferson.ny.us or call (315)786-6900.

Recycling Rules

DO Recycle

- Aerosol Cans, if empty
- Greeting Cards
- Wrapping Paper
- Canning Jar Lids
- Scrap Paper
- Empty Cardboard Boxes
- Glass Bottles & Jars
- Tins and Cans
- Newspapers & Magazines
- Empty plastic beverage bottles
- Empty plastic shampoo, detergent, etc.
- Empty tubs of yogurt, butter, etc.
- Empty milk bottles

DON'T Recycle

- CD/DVD Cases
- Candy Wrappers
- Single-Use Papers & Plastics
- Soiled Tissues/Paper Towels
- Shaving Cream Cans
- Disposable Razors
- Used Vacuum Cleaner Bags
- Bread bags/Ziploc bags
- Pellet Bags
- Plastic Coat Hangers
- Cardboard/Metal Containers
- (Pringles, Cocoa, Crisco)
- Rubber Garden Hoses

For free and convenient electronic waste recycling options, please visit the NYS Department of Environmental Conservation's website at: <https://www.dec.ny.gov/chemical/66872.html>

The Following Items are Recyclable ONLY at Transfer Stations (Not Curbside):

Batteries:	Alkaline, Rechargeable, Automotive
Electronic Scrap :	Computers, Printers, TV's, Answering Machines, Scanners, Household Thermostats

Taken ONLY at Transfer Stations as Scrap Metal (Not Curbside):

Refrigerators :	Only if freon has been removed
Other Appliances:	Stoves, Washers, Dryers, Vacuum Cleaners, Toasters, Crock Pots, Griddles, Coffee Maker (without the glass carafe)
Small Electric Motors:	Any appliance that contains a SMALL electric motor.

SOLID WASTE

[Events Calendar](#)

[FAQ](#)

[Homeowners Guide to](#)

[Asbestos](#)

[Household Hazardous Waste](#)

[News](#)

[Recycling](#)

[Services and Fees](#)

[Recycle Coach Web-App](#)

[Useful Links](#)

Recycling In St. Lawrence County

RECYCLING HOTLINE – (315) 379-9084 (Line is staffed Monday - Friday 8:00am to 3:30pm)

[North County Recycles](#) - This site provides you with the latest recycling information for the tri-county area as well as the most recent TV commercials. Educational videos are also available at this site. You are encouraged to utilize it as an additional recycling resource.

Glass, Metal & Plastic Containers, Cartons And Cardboard & Paper

- [Click HERE](#) to get a process overview.
- [Click HERE](#) to get the latest Recycling Instructions Flyer - Packaging Instructions and Non-Recyclable Items. Flyers are available on-line or by calling the Recycling Hotline.

Bulk Metal

- We accept residential scrap metal items and appliances with refrigerants - FREE OF CHARGE - both large and small.
- Acceptable Items Include:
 - Large Appliances or White Goods
 - Small Appliances
 - Bicycles
 - Barbeques
 - Metal Patio Furniture
 - Metal Doors & Window Frames
 - Automotive Parts (oil must be drained)
 - Metal Ladders, Ironing Boards, Tools, etc...

CONTACT INFORMATION



ST. LAWRENCE
COUNTY GOVERNMENT

Solid Waste Department

Fox Building Highway Department
44 Park Street
Canton, New York 13617

[View Map to Solid Waste Dept.](#)

Ph: **315-379-9084**

Fx: **315-379-1061**

[Email Solid Waste Dept.](#)

Donald R. Chambers,
Director

Ellen Hooker,
Deputy Director of Solid Waste

Tires

- The County transfer stations accept car and truck tires < 44" in diameter at a predetermined rate per ton.
 - Minimum charge is \$15.00.
 - For tires larger than 44" or for off-road tires (tractor, loader, etc.) contact the transfer station first to see if they are accepting these type of tires.
 - We suggest that the tires are removed from the rims, but will accept them on the rims.
-

Electronic Waste - E-Waste

- Covered Electronic Equipment (CEE) will be accepted - FREE OF CHARGE - at the County's transfer stations.
- To be eligible for free drop-off you MUST be:
 - A residential owner of the equipment, or
 - A business of less than 50 employees, or
 - A not-for-profit of less than 75 employees.
- Dismantlers are not eligible for this service.
- For an overview of the New York State Electronic Equipment Recycling & Reuse Act, [Click HERE](#).
- We will not accept materials that have been scavenged or that are disassembled.
- CEE Materials include:
 - Televisions (as well as cathode ray tubes)
 - Small Scale Servers
 - Computers
 - Computer Peripherals*
 - Monitors
 - Electronic Keyboards
 - Electronic Mice or Similar Pointing Devices
 - Facsimile Machines**
 - Document Scanners**
 - Printers**
 - Small Electronic Equipment*
 - VCRs
 - Digital Video Recorders
 - Portable Digital Music Players
 - DVD Players
 - Digital Converter Boxes
 - Cable / Satellite Receivers
 - Electronic or Video Game Consoles

* Computer peripherals and small electronic equipment also include any cables, cords, or wiring permanently affixed to or incorporated into such products.

** Only those intended for use with a computer and weighing less than 100 lbs.

Rechargeable Batteries Recycling

The "[New York State Rechargeable Battery Law](#)" was signed into effect December 10, 2010. The law requires manufacturers and retailers to accept rechargeable batteries at no charge to the consumer.

Effective December 5, 2011 rechargeable batteries are banned for disposal. It is against the law to place rechargeable batteries in your trash. Please [Click HERE](#) for an informational flyer.

We will be working closely with Call 2 Recycle to provide additional collection sites in the County. [Click HERE](#) to go to Call 2 Recycles webpage.

Drop off locations are:

- Ogdensburg Transfer Station
- Massena Transfer Station
- Gouverneur Transfer Station
- Star Lake Transfer Station
- [Zip Code Drop-Off Point Locator](#)

Drycell Batteries Recycling

Now available at the County's four transfer stations on a year-around basis.

- Rechargeable batteries MUST be kept separated from non-rechargeable batteries. Please [Click HERE](#) if you have any questions on packaging of Rechargeable Batteries.
- In addition to the four County transfer stations, the Clifton Fine Lions Club is sponsoring the collection and recycling of drycell batteries at NO Cost to the public.
- They will be accepting:
 - AA, AAA, C, D and 9 Volt
 - Button Batteries (hearing aids, watches, etc.)
 - Cell Phone Batteries (terminals must be taped for these types of batteries)
- Drop off locations are:
 - Fine Town Office Building
 - Cranberry Lake Municipal Building
- Batteries will be processed by a universal waste handler. All heavy metals and toxic substances are reused, recycled or rendered harmless.

Learn more about recycling at the New York State Department of Environmental Conservation [website](#).

If you or your organization is interested in enhancing your recycling process or starting a recycling club please contact the Solid Waste Department @ (315) 379-9084.

Appendix D – Planning Unit Local Ordinances

DRAFT

**LOCAL LAW NO. 1 OF 2014
COUNTY OF JEFFERSON, STATE OF NEW YORK**

**LOCAL LAW OF THE COUNTY OF JEFFERSON TO PROVIDE A UNIFORM
SYSTEM FOR MANAGING THE COLLECTION, TRANSPORTATION AND
DISPOSAL OF SOLID WASTE AND RECYCLABLES**

Be It Enacted, by the Board of Legislators of the County of Jefferson, State of New York as follows:

LEGISLATIVE FINDINGS

The Board of Legislators of the County of Jefferson, upon consideration and in support of the adoption of Local Law No. 1 of 2014, hereby finds and declares:

1. The safe and proper disposal of the solid wastes generated by the people of the County has been and remains a matter of serious public concern. Having a solid waste management system that is environmentally sound and financially self-sufficient benefits all of the residents of the County in that it provides a safe, sanitary and efficient means for the collecting, transporting and disposing of solid wastes.
2. To that end, the County entered into an inter-municipal agreement on or about 1986 with the Development Authority of the North Country ("Authority"), to develop, construct and install a sanitary landfill located in the Town of Rodman (the "Authority landfill") for the purpose of disposing of solid waste materials that are produced or collected within the participating communities.
3. The Authority landfill has therefore become an integral component of the County's solid waste management system. Additionally, the professional resources of the Authority in the field of solid waste management are a valuable component of the County solid waste management system.
4. Following the adoption of the inter-municipal agreement with the Authority, the County adopted local laws and regulations governing the management of solid waste, including provisions governing collection, source separation of recyclables pursuant to General Municipal Law 120-aa.
5. The goal of the Regional Solid Waste Management Plan is to create a system of solid waste collection, transportation and disposal that is financially self-supporting, without the use of tax money to subsidize the waste management and recycling program costs. The County finds that designing an integrated solid waste management system that is financially supported by a user fee system is more equitable than one funded by taxes. Revenues needed to pay for the County's solid waste system are derived from user fees that are based on the amount of non-recyclable waste delivered to the County's facilities, as well as from revenues from

the sale of recyclable materials, rather than from tax revenues that are based on the assessed value of properties in the County.

6. The County provides a strong economic incentive to maximize recycling and waste reduction, by only charging a reduced or no fee on non-recyclable waste deliveries. The County does not currently charge for the use of its recycling programs and recycling services. Thus, both those who generate waste and those having a commercial waste hauling permit have an incentive to reduce their disposal costs by increasing their recyclables. This user fee system encourages recycling and other waste reduction activities and therefore maximizes environmental benefits. All classes of waste generators are equitably served when all classes deliver their wastes to the County's system. However, fiscal inequity results when some classes of generators or a significant number of waste generators or haulers do not participate in the system. In addition, waste reduction and recycling benefits are lost when recyclable materials are commingled with non-recyclable waste for disposal at out-of-system facilities.
7. Furthermore, establishing a regulatory scheme, including the granting of permits to collect and transport recyclables and waste delivered to the County's solid waste system is both a sound governmental function and provides a safe and effective means of controlling the collection, transportation and disposal of solid waste and recyclables.
8. The County finds and declares that establishing an integrated system of solid waste collection, transportation and disposal is the most effective means of achieving the goals of its Solid Waste Management Plan.

SECTION I. DEFINITIONS

1. **Authority Landfill** shall mean the Landfill owned and operated by the Authority and located at 23400 State Route 177, Town of Rodman, State of New York.
2. **Board of Legislators** or Board shall mean the duly elected County Board of Legislators.
3. **Commercial Waste Permit** shall mean the permit issued pursuant to Section III.1 of this local law.
4. **Commercial Waste** shall mean Solid Waste generated from commercial, business, institutional, educational, or other non-residential sources in the County.
5. **Construction and Demolition Debris** shall have the meaning set forth in 6 NYCRR 360-1.2 as amended from time to time.

6. **County** shall mean Jefferson County, New York, a municipal corporation of the State of New York, with offices at 195 Arsenal St. Watertown, New York and all of its political subdivisions.
7. **County Facility** shall mean any Solid Waste management facility or facilities owned and/or operated, or caused to be operated by the County, a municipality, or more than one municipality jointly, or public authority, or privately owned facility designated by the County, located within or out of the County that accepts or disposes of Solid Waste and/or Recyclables pursuant to agreement with the County, including but not limited to landfills, transfer stations, materials recovery facilities, drop off centers, and resource recovery facilities. For the purposes of this local law, the Authority Landfill shall be considered a County Facility.
8. **Department** shall mean the County Recycling and Waste Management Department or its successor. The designated head of that Department is authorized to act on behalf of the Department and the County as authorized herein.
9. **Designated Recyclables** shall mean the materials, as established and described by the Department which shall be separated from the Solid Waste stream for collection and/or delivery to a materials recovery facility or other recycling facility or market. The list of Designated Recyclables may be modified from time to time by regulation promulgated by the Department.
10. **Farm** shall have the meaning specified in 6 NYCRR Part 360 - 1.2 as the same may be amended, suspended or replaced.
11. **Hazardous Waste** shall mean those materials, substances, or wastes including, but not limited to, pesticides and containers used for pesticides, other waste which appears on the list or satisfies characteristics of hazardous waste promulgated by the New York State Commissioner of the Department of Environmental Conservation, and any other material, determined now or in the future, to be hazardous by State or Federal rule, regulation and/or statute.
12. **Household Hazardous Waste** shall mean household hazardous waste as defined in 6 NYCRR Part 360 of the State of New York as the may be amended from time to time.
13. **Industrial Waste** shall mean industrial waste as defined in 6 NYCRR 360-1.2(b)(88) of the State of New York as the same and may be amended from time to time. Industrial waste may have characteristics requiring special handling or treatment in order to qualify for acceptance at a County Facility.
14. **Infectious Waste** shall have the meaning specified in 6 NYCRR 360-1.2 as the same may be amended from time to time.

15. **Market** shall mean a primary user of a particular Designated Recyclable, including but not limited to glass factories, de-tinners, plastic recovery facilities, paper mills or consolidators of such materials not including the County.
16. **Open Dump** shall mean a Solid Waste disposal area which is not authorized to be operated under applicable Federal and State laws and regulations.
17. **Person or Persons** shall mean any individual, company, partnership, association, firm, corporation, municipality, or any other entity.
18. **Prohibited Materials** shall mean materials which are not authorized to be accepted at a County Facility or the Authority Landfill under the permit for such Facility, together with such other materials posing a hazard or which the Facility is unable to accommodate as may be determined from time to time by the Department.
19. **Recyclables** shall mean such material from Commercial Waste, Industrial Waste, Construction and Demolition Debris, and Residential Waste sources, including but not limited to "Designated Recyclables", which under any applicable law or regulation, is not Hazardous Waste and which can be reasonably separated from the Solid Waste stream and held for its material recycling or reuse value.
20. **Refuse** shall mean putrescible and incidental non-putrescible Solid Waste including, but not limited to, animal, vegetable and paper waste. Refuse originates primarily in homes, businesses and restaurants, and has characteristics similar to that of Solid Waste collected and disposed of as part of normal residential and commercial collections in the County.
21. **Regulations** shall mean Regulations promulgated by the Board pursuant to the authority contained in this local law.
22. **Resident** shall mean any individual who is a legal resident of the County or any individual who is a temporary resident of the County.
23. **Residential Waste** shall mean Solid Waste generated from all houses, apartments and other residential dwellings, including, but not limited to, all single family dwellings and multi-family dwellings in the County.
24. **Solid Waste** shall have the meaning specified in 6 NYCRR Part 360-1.2 as the same may be amended, superseded or replaced.
25. **Waste Collector** shall mean any individual, association, partnership, firm, corporation, not-for-profit organization, municipality, educational institution or any other Person so deemed by the Department engaged in the business of collection, pickup, transfer, removal and/or disposal of Solid Waste and/or Recyclables.

SECTION II. ESTABLISHMENT OF THE DEPARTMENT OF RECYCLING AND WASTE MANAGEMENT, AND ADMINISTRATION OF LOCAL LAW

1. There is hereby established the Jefferson County Department of Recycling and Waste Management which shall operate as the department in County government responsible for oversight, coordination, operation and regulation of all recycling and waste management matters and other such matters as the Board shall direct.
2. The Director shall be appointed by the Board and shall serve at the pleasure of the Board. The Director shall be the administrative head of the Department and shall be responsible for the supervision of the Department's budget, personnel and mission. The Director may appoint such staff as may be authorized by the Board and subject to appropriations being made therefor.
3. The Department may encourage and conduct studies, investigations and research, develop and implement educational programs, and assist municipalities in the studying, implementation and planning of their various actions in effecting Solid Waste management in the County within the confines of appropriations provided therefor by the Board.
4. The Department shall be primarily responsible for the administration and enforcement of the terms of this local law, and for the promulgation of such rules and regulations as may be reasonably required in connection with the administration of this local law or the operation of any County Facility.
5. The Department shall administer the program of registering and permitting all Waste Collectors and other Persons collecting and/or transporting and disposing of Solid Waste and/or Recyclables at a County Facility. This includes the issuance, renewal, and revocation of all permits described in this local law.
6. The Authority shall be responsible for the administration of the Authority Landfill and for promulgating such rules and regulations as the Authority, in its sole discretion, may deem to be reasonably necessary.
7. In addition to authorized representatives of the County, the administrators and personnel of the Development Authority of the North Country (Authority) shall be authorized, upon personal knowledge and/or information and belief, to issue notices of violation on behalf of the Department and pursuant to Section IV (2)a. of this local law, to any person acting in violation of any provision of this local law. All such notices issued pursuant to this authorization shall be in a form approved by the Department and shall be returnable to the Department for prosecution pursuant to Section IV hereof.

SECTION III. STANDARDS AND REGULATIONS

1. Commercial Waste Permit Requirements

- a. No Waste Collector shall collect and/or transport and then dispose of Solid Waste and/or Recyclables at a County facility without obtaining a Commercial Waste Permit issued by the Department.
- b. All applications for Commercial Waste Permits shall be in writing and shall contain such information as requested by the Department, but at a minimum, as set forth in this local law. Such applications shall include a list of all vehicles (including registration and vehicle license numbers) the applicant intends to utilize for the collection of Solid Waste and/or Recyclables in the County. The list shall also describe the cubic yard capacity for each vehicle. All Commercial Waste Permit information shall be verified by the applicant as required by this local law and the Department.
- c. Upon receipt of a complete application, together with an application fee of \$100 and proof of insurance as required by subsection (k), below, the Department shall thereupon issue the applicant a Commercial Waste Permit so long as the applicant is otherwise deemed by the Department to be in compliance with this local law and related requirements of the Department. A Commercial Waste Permit shall, unless revoked or suspended pursuant to this local law, remain in effect for one year after it is issued.
- d. Renewal of Commercial Waste Permits shall be in the same manner and subject to the same conditions as original Commercial Waste Permits, and also shall be subject to any additional requirements in effect at the time of application for renewal as specified by the Department.
- e. The Department shall issue to a Permit Holder a decal or other identifying mark, to be displayed on each collection vehicle registered with the Department and used by the Permit Holder for collection of Solid Waste within the County. Use of any vehicle for the collection and subsequent disposal of Solid Waste at a County Facility that is not registered with the Department and identified as such shall be a violation of this Local Law.
- f. No Commercial Waste Permit issued pursuant to the provisions of this local law shall be transferable.
- g. The Commercial Waste Permit holder hereunder shall, when requested by the Department, furnish the Department with a list identifying the municipalities within which collection services are provided with as much detail as the Department may require to comply with the reporting requirements of the NYS Department of Environmental Conservation's Annual Transfer Station and/or Planning Unit Reports.
- h. The Department, pursuant to Section IV of this local law, shall have the power to impose a civil penalty or suspend, revoke or condition a Commercial Waste Permit

granted or renewed pursuant to this local law for any violation of any provision of this local law or any applicable rule, regulation, code or ordinance relating to the collection, handling, hauling or disposal of Solid Waste and/or Recyclables including, but not limited to, those promulgated by the Department.

- i. All collection, transportation and/or disposal of Solid Waste and/or Recyclables shall be in strict conformance with the rules and regulations prescribed in this local law and as such rules and regulations may hereafter be amended or supplemented by the Department.
 - j. All vehicles used in the collection, transportation and/or disposal of Solid Waste and/or Recyclables shall be maintained in a sanitary condition and shall be constructed as to prevent leakage in transit. The body of the vehicle shall be wholly enclosed or shall at all times be kept covered with an adequate cover. The name of the Commercial Waste Permit holder shall be readily visible on all vehicles, and on all containers utilized for the collection of Solid Waste and/or Recyclables generated within the County.
 - k. All Commercial Waste Permit holders shall carry insurance with coverages and terms established by regulations of the Board, naming Jefferson County, its officers, agents and employees, as additional insureds on a primary and non contributory basis.
 - l. Any Commercial Waste Permit issued pursuant to this local law shall be in the nature of a privilege subject to the terms and conditions set forth in this local law and as amended or supplemented by the Department, and shall not be deemed to create a property interest with respect to the Commercial Waste Permit in the holder.
 - m. All Commercial Waste Permit requirements, including but not limited to fees, insurance coverage amounts, and length of permit validity, may be amended from time to time by resolution of the Board of Legislators.
2. Disposal of Solid Waste
- a. No Waste Collector shall dispose of Solid Waste at any County Facility without a Commercial Waste Permit. Residents may transport, deliver and dispose of Residential Waste at the County Facilities without the necessity of obtaining a permit, provided that the applicable tipping fees are paid.
 - b. Anyone entering a County Facility to dispose of Solid Waste must adhere to the rules and regulations as posted and must follow the instructions of the attendant on duty.
 - c. Nothing within this local law shall be construed at any time to restrict the ability of the Department to refuse to accept Hazardous Waste or other Prohibited Materials at any County Facility.

- d. The Department may, from time to time, provide alternative disposal means at the Authority Landfill or other County Facilities for selected Prohibited Materials.
- e. No Waste Collector or other Person shall dispose of Solid Waste at a County Facility unless such Person or entity shall pay the applicable tipping fee.

3. Disposal of Recyclables

- a. Nothing in this local law shall be construed to prohibit any Person generating Recyclables within the County from separating such recyclables from other wastes and making arrangements for the separate collection or delivery and sale of such materials under such terms as such Person may choose.
- b. No Person shall commingle Designated Recyclables with other Solid Waste and set such commingled Designated Recyclables and Solid Waste at curbside for collection by a Waste Collector.
- c. Owners of facilities open to the public and all organizers of public events are required to provide for the separate recovery, collection, and disposal of Recyclable Materials at the sites and/or events under their sponsorship.
- d. All landlords shall:
 - 1. Deliver information about tenants' source separation obligations to all tenants; and
 - a. Incorporate in tenants' lease arrangements a condition that tenants must source separate Recyclable Materials in accordance with the provisions contained in this Law.
 - b. For rental properties at which landlords maintain the responsibility for waste disposal, all landlords shall also provide, and pay for the costs of, adequate access to on-site recycling facilities and systems.
 - c. No Waste Collector shall collect Designated Recyclables commingled with other Solid Wastes from any customer in the County.
 - d. All Waste Collectors shall provide customers that place separated Designated Recyclables at curbside a separate collection for such Designated Recyclables, and shall not commingle such Designated Recyclables with other solid wastes.
 - e. Designated Recyclables collected at curbside by a Waste Collector may be delivered to a County Facility or to another facility capable of

sorting and marketing said material, provided that such facility is permitted or registered with the State, or approved by the Department.

4. Promulgation of Regulations

- a. The Board is hereby authorized and directed to adopt and promulgate, amend and repeal such rules and Regulations by resolution as recommended by the Director which in his discretion are necessary or desirable to carry out, interpret and enforce the intent and purposes of this local law. Notwithstanding this power, any failure to adopt and promulgate such rules and Regulations shall not impair the enforceability of this local law in a court of competent jurisdiction.

SECTION IV. ENFORCEMENT

1. Administrative Sanctions

- a. Penalties and License Suspension/Revocation. The Department shall have the right to impose a civil penalty and/or suspend, condition or revoke any Commercial Waste Permit if the holder of such permit violates any of the provisions of this local law or any rules, regulations or requirements of the Department that may be adopted and modified from time to time in accordance with this local law.
- b. Civil penalties shall be assessed in an amount not to exceed \$500.00 for a first offense; up to \$1500.00 for a second offense against the same provision of this law within twelve (12) months of the first offense; and up to \$2500 and/or suspension or revocation of any permit issued pursuant to the local law for a third offense against the same provision of law within eighteen (18) months of the first offense. Civil penalties, or suspension or revocation of a Commercial Waste Permit may be imposed only after service of a written notice of violation upon the permit holder and, if demanded, a hearing as provided for in this local law.

2. Notice and Hearing

- a. Upon any violation of the provisions of this local law or any applicable rules, regulations or requirements of the Department, the Department may serve notice in person or by ordinary mail sent to the residence of the offender, or in the case of a holder of any permit issued pursuant to this local law, to the address set forth in the permit application on file with the Department. Such notice shall state the Department's intent to revoke or suspend any permit, and/or impose a civil penalty upon the person charged. Any Person so notified may demand a hearing as allowed by this Section, by serving upon the Department a written request for a hearing; such request must be received by the Department within ten days of the date of service of notice. Upon receipt of such demand, a hearing shall be scheduled and held at the offices of the Department.

- i) If the holder of a Commercial Waste Permit served with Notice pursuant to subsection (a) above fails to demand a hearing within the ten-day notice period provided for in Section IV.2.a, the revocation, suspension and/or surcharge provided for in the notice, shall be effective.
- ii) Hearings. Hearings shall be held by a Hearing Officer designated by the Board. In any hearing conducted pursuant to this Section, the following shall apply:
 - (1) A stenographic record shall be kept.
 - (2) The permit holder may be represented by counsel.
 - (3) Witnesses shall be sworn and subject to cross-examination.
 - (4) Evidence submitted shall be relevant and may include evidence as to the past performance of the permit holder. Hearsay evidence shall be admissible, but shall be accorded such weight as the Hearing Officer deems appropriate, consistent with its reliability.
 - (5) Findings of fact shall be made by a majority of the Hearing Officer, in writing, upon a preponderance of the evidence.
 - (6) Upon a finding that a violation is proved, the Hearing Officer shall impose such civil penalty, or order such suspension or revocation of the Commercial Waste Permit, as it deems appropriate. The determination of the Hearing Officer shall be final, and shall be subject to judicial review.
- iii) Any person who shall set Designated Recyclables commingled with other solid waste out for collection shall be liable for a civil penalty of up to \$50 for the first violation, \$100 for a the 2nd violation committed within 12 months of a prior violation, and \$200 for a 3rd or subsequent committed within 12 months of a prior violation.
- iv) Any Person who is ordered to pay a civil penalty for a violation of the provisions of this local law shall pay such penalty in full before any permit issued pursuant to this local law can be renewed or reinstated, unless otherwise ordered by the Hearing Officer.
- v) Civil Enforcement. The County may enforce the orders and decisions of the Hearing Officer in a civil court of competent jurisdiction of the State of New York, including, but not limited to actions for declaratory and injunctive relief.

3. Presumptions

There shall be rebuttable presumptions in the enforcement of this local law that:

- a. The placement of any Container which is marked or identified with the name of any Waste Collector, at any location within the County, shall be presumptive evidence that said Waste Collector is providing solid waste collection services at said location within the County as of the date of said placement.
- b. Evidence of Solid Waste in a Container located in the County as described in Section IV(2)(a) above, and subsequent observation of the same Container empty, shall be presumptive evidence that Solid Waste was collected from the Container by the Waste Collector whose name is marked on the Container.

4. Enforcement Guidelines

- a. The Department shall notify in writing each Waste Collector presently collecting, transporting and/or delivering Solid Waste generated or collected in the County of the adoption of the within local law and the effective date thereof. Such notice shall be delivered by first class mail at the last known address or business address or in person. Any such Waste Collector or Contractor so notified shall have sixty (60) days from the date of such notice to comply with the rules, regulations and requirements set forth herein. Thereafter, the Department shall implement the enforcement provisions of this local law as set forth herein.

SECTION V. EFFECTIVE DATE

This law shall take effect on March 1, 2014.

SECTION VI. REPLACEMENT OF LOCAL LAW NO. 3 of 1991

This local law will, upon its effective date, repeal and replace Local Law No. 3 of 1991, "Providing for Separation at the Source of Solid Waste Generation into Reusable, Recyclable and Waste Components, and to Provide Regulatory Authority to Assure that said Components are Handled, Transported and Disposed of Properly by Various Permitting and Enforcement Measures", as amended. All Board resolutions pertaining to solid waste adopted under the authority of that local law will remain in effect until superceded by future resolutions. All regulations promulgated by the Department under the authority of that local law will remain in effect until superceded by new regulations promulgated under the authority of this local law.

SECTION VII. SEVERABILITY

If any part of this local law, as originally enacted or as amended from time to time, is found to be illegal, or its application to any Person or circumstance is held invalid, the remainder and the

application of its provisions to Persons or circumstances other than those to which it is held invalid, shall not be affected thereby and shall remain in full force and effect.

DRAFT

RESOLUTION NO. 111 - 2015
RESOLUTION ADOPTING AND OTHERWISE TREATING
LOCAL LAW NO. 3 – 2015, COUNTY OF LEWIS

Introduced by Legislator Michael A. Tabolt, Chairman of the Board of Legislators.

WHEREAS, a resolution was duly adopted by the Board of Legislators on March 3, 2015, directing that a public hearing be held by said Board on April 7, 2015, from 5:00 p.m. to 5:30 p.m. at the Second Floor Board Room of the Courthouse, 7660 North State Street, Lowville, New York 13367, to hear all interested parties on a proposed Local Law entitled, **“LOCAL LAW OF THE COUNTY OF LEWIS TO PROVIDE A UNIFORM SYSTEM FOR MANAGING THE COLLECTION, TRANSPORTATION AND DISPOSAL OF SOLID WASTE AND RECYCLABLES.”**; and

WHEREAS, notice of said public hearing was duly advertised in the *Watertown Daily Times*, the official newspaper designated by the County, on April 1, 2015, and posted on the bulletin board of the Lewis County Courthouse, 7660 North State Street, Lowville, New York, at least five (5) days prior to such public hearing; and

WHEREAS, said public hearing was duly held at such location at such time and all parties in attendance were permitted an opportunity to speak on behalf of or in opposition to said proposed Local Law, or any part thereof; and

WHEREAS, the Board of Legislators wishes to make certain determinations based upon the information heretofore submitted to the Board as well as received during the public hearing;

BE IT FURTHER RESOLVED, as follows:

Section 1. This Local Law (Introductory No. 5 – 2015), County of Lewis, being **“LOCAL LAW OF THE COUNTY OF LEWIS TO PROVIDE A UNIFORM SYSTEM FOR MANAGING THE COLLECTION, TRANSPORTATION AND DISPOSAL OF SOLID WASTE AND RECYCLABLES.”** be and the same hereby is designated as Local Law No. 3 – 2015, County of Lewis.

Section 2. That Local Law No. 3 – 2015, County of Lewis, with designation stated above, be and the same is hereby enacted, waiving any and all defects and informalities in the adoption thereof and shall take effect immediately upon filing with the Secretary of State.

Moved by Legislator Moser, seconded by Legislator Dolhof, and adopted pursuant to the following roll call vote:

YEAS: Dolhof, Hathway, King, Kulzer, Moroughan, Moser, and Tabolt

NAYS: Chartrand

ABSENT: Brennan and Pepper

**RESOLUTION NO. 81 - 2015
FIXING DATE OF PUBLIC HEARING ON LOCAL LAW
(INTRODUCTORY LOCAL LAW NO. 5 - 2015), COUNTY OF LEWIS**

Introduced by Legislator Craig Brennan, Chairman of the Solid Waste Committee.

WHEREAS, there will be presented and introduced at a meeting of this Board of Legislators to be held on March 3, 2015, a proposed Local Law entitled "**LOCAL LAW OF THE COUNTY OF LEWIS TO PROVIDE A UNIFORM SYSTEM FOR MANAGING THE COLLECTION, TRANSPORTATION AND DISPOSAL OF SOLID WASTE AND RECYCLABLES.**"

Now, therefore, BE IT RESOLVED as follows:

Section 1. That a public hearing will be held on April 7, 2015, from 5:00 p.m. to 5:30 p.m., before the Lewis County Board of Legislators on the Second Floor Board Room at the Lewis County Courthouse, New York, 7660 North State Street, Lowville, New York.

Section 2. That at least five (5) days notice of such hearing shall be given by the Clerk of this Board by the due posting thereof upon the bulletin board of the Lewis County Court House, Lowville, New York, and by publishing such notice at least once in the official newspaper of the County.

Moved by Legislator Brennan, seconded by Legislator Dolhof, and adopted.

**LOCAL LAW (INTRODUCTORY NO. 5-2015)
COUNTY OF LEWIS, STATE OF NEW YORK**

**A LOCAL LAW OF THE COUNTY OF LEWIS TO PROVIDE A UNIFORM
SYSTEM FOR MANAGING THE COLLECTION, TRANSPORTATION AND
DISPOSAL OF SOLID WASTE AND RECYCLABLES**

BE IT ENACTED, by the Board of Legislators of the County of Lewis, State of New York as follows:

LEGISLATIVE FINDINGS

The Board of Legislators of the County of Lewis, upon consideration and in support of the adoption of Local Law No. 5 - 2015, hereby finds and declares:

1. The safe and proper disposal of the solid wastes generated by the people of the County has been and remains a matter of serious public concern. Having a solid waste management system that is environmentally sound and financially self-sufficient benefits all of the residents of the County in that it provides a safe, sanitary and efficient means for the collecting, transporting and disposing of solid wastes.
2. To that end, the County entered into an inter-municipal agreement in or about 1986 with the Development Authority of the North Country ("Authority"), to develop, construct and install a sanitary landfill located in the Town of Rodman (the "Authority landfill") for the purpose of disposing of solid waste materials that are produced or collected within the participating communities. At that time, Lewis County adopted Local law No. 2 of 1986, which provided that all solid waste generated or originated within Lewis County be delivered to the North Country Solid Waste Management Facility. The Local Law was subsequently amended in 1992 and 2008.
3. The Authority landfill has therefore become an integral component of the County's solid waste management system. Additionally, the professional resources of the Authority in the field of solid waste management are a valuable component of the County solid waste management system.
4. Following the adoption of the inter-municipal agreement with Authority, the County adopted local laws and regulations governing the management of solid waste, including provisions governing collection, source separation of recyclables pursuant to General Municipal Law 120-aa, and a flow control provision directing waste generated within the County to disposal facilities operated by the County or the Authority, Since that time,

legal issues arose as to the validity of municipalities mandating that all solid waste generated or collected within their jurisdiction be disposed of in designated municipal facilities. That issue has recently been resolved in federal court and as a result, the County finds that it is appropriate to review its solid waste management program and amend the same in order to address its current needs.

5. The goal of the Regional Solid Waste management Plan is to create a system of solid waste collection, transportation and disposal that is financially self-supporting, without the use of tax money to subsidize the waste management and recycling program costs. The County finds that designing an integrated solid waste management system that is financially supported by a user fee system is more equitable than one funded by taxes. Revenues needed to pay for the County's solid waste system are derived primarily from user fees that are based on the amount of non-recyclable waste delivered to the County's facilities, rather than from tax revenues that are based on the assessed value of properties in the County. Revenues from the sale of recyclable materials also contribute to system operating costs, however, to a lesser degree.
6. The County provides a strong economic incentive to maximize recycling and waste reduction, by changing a reduced or no fee on recyclable materials. Thus, both those who generate waste and those having a commercial waste hauling permit have an incentive to reduce their disposal costs by increasing their recyclables. Tipping fees on non-recyclable wastes are used to financially support the County's recycling programs which may not generate sufficient revenues to support themselves. This user fee system encourages recycling and other waste reduction activities and therefore maximizes environmental benefits. All classes of waste generators are equitably served when all classes deliver their wastes to the County's system. However, fiscal inequity results when some classes of generators or a significant number of waste generators or haulers do not participate in the system. In addition, waste reduction and recycling benefits are lost when recyclable materials are commingled with non-recyclable waste for disposal at out-of-system facilities.
7. Furthermore, establishing a regulatory scheme, including the granting of permits to collect and transport recyclables and waste within the County is both a sound governmental function and provides a safe and effective means of controlling the collection, transportation and disposal of solid waste and recyclables.
8. The County finds and declares that establishing an integrated system of solid waste collection, transportation and disposal that directs all of the non-recyclable waste generated in the County to the public facilities established for the system is the most effective means of achieving the goals of its Solid Waste Management Plan. Recent

judicial decisions in the federal courts have determined that municipal governments indeed have the power to direct the flow of waste materials to public facilities. The County remains authorized by the Laws of the State of New York to direct the flow of waste generated in the County to facilities constructed for that purpose. The County hereby declares it to be in the public interest and adopt the annexed legislation amending and restating the local laws requiring that all Solid Waste generated or collected within the County be delivered to a County-owned transfer station or other transfer station as designated by County resolution and/or directly to the Authority Landfill for disposal. The County further finds that including all such recyclable and non-recyclable waste within the integrated system is the best means of providing for the long-term benefit of all participants of the system.

SECTION I. DEFINITIONS

1. **Authority Landfill** shall mean the Landfill owned and operated by the Authority and located at 23400 State Route 177, Town of Rodman, State of New York.
2. **Board of Legislators** or Board shall mean the fully elected County Board of Legislators.
3. **Commercial Waste Permit** shall mean the permit issued pursuant to Section III.1 of this local law.
4. **Commercial Waste** shall mean Solid Waste generated from commercial, business, institutional, education, or other non-residential sources in the County.
5. **Construction and Demolition Debris** shall have the meaning set forth in 6 NYCRR 360-1.2 as amended from time to time.
6. **County** shall mean Lewis County, New York a municipal corporation of the State of New York, with offices at 7660 North State Street, Lowville, New York and all of its political subdivisions.
7. **County Facility** shall mean any Solid Waste management facility or facilities owned and/or operated, or caused to be operated by the County, a municipality, or more than one municipality jointly, or public authority, or privately owned facility designated by the County, located within or out of the County that accepts or disposes of Solid Waste and/or Recyclables pursuant to agreement with the County, including but not limited to landfills, transfer stations, materials recovery facilities, drop off centers, and resource recovery facilities.

8. **Department** shall mean the County Solid Waste Management and Recycling Department (Lewis), (Recycling and Solid Waste Department [Jefferson]) (Solid Waste Department [St. Lawrence]) or its successor. The designated head of that Department is authorized to act on behalf of the Department and the County as authorized herein.
9. **Designated Recyclables** shall mean the materials, as established and described by the Department which shall be separated from the Solid Waste stream for collection and/or delivery to a materials recovery facility or other recycling facility or market. The list of Designated Recyclables may be modified from time to time by regulation promulgated by the Department.
10. **Farm** shall have the meaning specified in 6 NYCRR Part 360-1.2 as the same may be amended, suspended or replaced.
11. **Hazardous Waste** shall mean those materials, substances, or wastes including, but not limited to, pesticides and containers used for pesticides, other waste which appears on the list or satisfies characteristics of hazardous waste promulgated by the New York State Commissioner of the Department of Environmental Conservation, and any other material, determined now or in the future, to be hazardous by State or Federal rule, regulations and/or statute.
12. **Household Hazardous Waste** shall mean household hazardous waste as defined in 6 NYCRR Part 360 of the State of New York as the same and may be amended from time to time.
13. **Industrial Waste** shall mean that portion of Commercial Waste generated by manufacturing or industrial processes which may have characteristics requiring special handling or treatment in order to qualify for acceptance at a County or Authority Facility. Such waste may include, but is not limited to, the following: electric power generation; fertilizer/agricultural chemicals; inorganic chemicals; iron and steel manufacturing; leather and leather products; nonferrous metals manufacturing/foundries; organic chemicals; plastic and resins manufacturing; pulp and paper industry; rubber and miscellaneous plastic products; stone, glass, clay and concrete products; textile manufacturing; transportation equipment; and water treatment. This term does not include oil or gas drilling, production, and water treatment. This term does not include oil or gas drilling, production, and treatment wastes (such as brines, oil, and fluids); or overburden, spoil, or trailing resulting from mining; or solution mining brine and insoluble component wastes.

14. **Infectious Waste** shall have the meaning specified in 6 NYCRR 360-1.2 as the same may be amended from time to time.
15. **Market** shall mean a primary user of a particular Designated Recyclable, including but not limited to glass factories, de-tinners, plastic recovery facilities, paper mills or consolidators of such materials not including the County.
16. **Open Dump** shall mean a Solid Waste disposal area which is not authorized to be operated under applicable Federal and State laws and regulations.
17. **Person or Persons** shall mean any individual, company, partnership, association, firm, corporation, municipality, or any other entity.
18. **Prohibited Materials** shall mean materials which are not authorized to be accepted at a County Facility or the Authority Landfill under the permit for such Facility, together with such other materials posing a hazard or which the Facility is unable to accommodate as may be determined from time to time by the Department.
19. **Recyclables** shall mean such material from Commercial Waste, Industrial Waste, Construction and Demolition Debris, and Residential Waste sources, including but not limited to "Designated Recyclables", which under an applicable law or regulation, is not Hazardous Waste and which can be reasonably separated from the Solid Waste stream and held for its material recycling or reuse value.
20. **Refuse** shall mean putrescible and incident non-putrescible Solid Waste including, but not limited to, animal, vegetable and paper waste. Refuse originates primarily in homes, businesses and restaurants, and has characteristics similar to that of Solid Waste collected and disposed of as part of normal residential and commercial collections in the County.
21. **Resident** shall mean any individual who is a legal resident of the County or any individual who is a temporary resident of the County.
22. **Residential Waste** shall mean Solid Waste generated from all houses, apartments and other residential dwellings, including, but not limited to, all single family dwellings and multi-family dwellings in the County.
23. **Solid Waste** shall have the meaning specified in 6 NYCRR 360-1.2 as the same may be amended, superseded or replaced.

24. **Waste Collector** shall mean any individual, association, partnership, firm, corporation, not-for-profit organization, municipality, educational institution or any other Person so deemed by the Department engaged in the business of collection, pickup, transfer, removal and/or disposal of Solid Waste and/or Recyclables.
25. **Waste generator** shall mean any individual, association, partnership, firm, corporation, not-for-profit organization or educational institution which produces Solid Waste and/or Recyclable Materials requiring disposal.
26. **Hearing Officers** shall mean Solid Waste Department Head and two (2) of the three (3) Board of Legislators who sit on the Solid Waste Committee; (determination of which committee members will serve to be decided among the three (3) legislative committee members) to hear any violation matters.

SECTION II. ADMINISTRATION

1. The Department shall be primarily responsible for the administration and enforcement of the terms of this local law, and for the promulgation of such rules and regulations as may be reasonably required in connection with the administration of this local law or the operation of any County Facility.
2. The Department shall administer the program of registering and permitting all Waste Collectors and other Persons collecting, transporting or disposing of Solid Waste and/or Recyclables generated within the County for disposal at Designated County facilities. This includes the issuance, renewal, and revocation of all Department permits described in this local law.
3. The Authority shall be responsible for the administration of the Authority Landfill and for promulgating such rules and regulations as the Authority, in its sole discretion, may deem to be reasonably necessary.
4. In addition to authorized representatives of the County, the administrators and personnel of the Development Authority of the North Country (Authority) shall be authorized, upon personal knowledge and/or information and belief, to issue notices of violation on behalf of the Department and pursuant to Section IV (2)(b) of this Local Law, to any person acting in violation of any provision of this Local Law. All such notices issued pursuant to this authorization shall be in a form approved by the Department and shall be returnable to the Department or their designee for prosecution pursuant to Section IV hereof.

SECTION III. STANDARDS AND REGULATIONS

1. Commercial Waste Permit Requirements

- a. No Waste Collector shall collect, transport or dispose of Solid Waste and/or Recyclables generated within the County without obtaining a Commercial Waste Permit issued by the Department.
- b. All applications for Commercial Waste Permits shall be in writing and shall contain such information as requested by the Department, but at a minimum, as set forth in this local law. Such applications shall include a list of all vehicles (including registration and vehicle license numbers) the applicant intends to utilize for the collection of Solid Waste and/or Recyclables in the County. The list shall also describe the cubic yard capacity for each vehicle. All Commercial Waste Permit information shall be verified by the applicant as required by this local law and the Department.
- c. Upon receipt of a complete application, together with an application fee as determined by the Department and proof of insurance as required by the Department, the Department shall thereupon issue the applicant a Commercial Waste Permit so long as the applicant is otherwise deemed by the Department to be in compliance with this local law and related requirements of the Department. A Commercial Waste Permit shall remain in effect, unless revoked or suspended pursuant to this local law.
- d. Renewal of Commercial Waste Permits shall be in the same manner and subject to the same conditions as original Commercial Waste Permits, and also shall be subject to any additional requirements in effect at the time of application for renewal as specified by the Department.
- e. The Department shall issue to a Permit Holder a decal or other identifying mark, to be displayed on each collection vehicle registered with the Department and used by the Permit Holder for collection of waste within the County. Use of any vehicle for the collection of waste that is not registered with the Department and identified as such shall be a violation of this Local Law.
- f. No Commercial Waste Permit issued pursuant to the provisions of this local law shall be transferable.

- g. The Commercial Waste Permit holder hereunder shall furnish the Department with a list identifying the municipalities within which collection services are provided and with as much detail as the Department may require to comply with the reporting requirements of the NYS Department of Environmental Conservation's Annual Transfer Station and/or Planning Unit Reports. This list shall be updated by the Commercial Waste Permit holder at the request of the Department.
- h. The Department, pursuant to Section IV of this local law, shall have the power to impose a civil penalty or suspend, revoke or condition a Commercial Waste Permit granted or renewed pursuant to this local law for any violation of any provision of this local law or any applicable rule, regulation, code or ordinance relating to the collection, handling, hauling or disposal of Solid Waste and/or Recyclables including, but not limited to, those promulgated by the Department.
- i. All collection, transportation and/or disposal of Solid Waste and/or Recyclables shall be in strict conformance with the rules and regulations prescribed in this local law and as such rules and regulations may hereafter be amended or supplemented by the Department.
- j. All vehicles used in the collection, transportation and/or disposal of Solid Waste and/or Recyclables shall be maintained in a sanitary condition and shall be constructed as to prevent leakage in transit. The body of the vehicle shall be wholly enclosed or shall at all times be kept covered with an adequate cover.
- k. All Commercial Waste Permit holders shall carry and shall provide proof of insurance as deemed appropriate by the Department.
- l. Any Commercial Waste Permit issued pursuant to this local law shall be in the nature of a privilege subject to the terms and conditions set forth in this local law and as amended or supplemented by the Department, and shall not be deemed to create a property interest with respect to the Commercial Waste Permit in the holder.

2. Disposal of Solid Waste

- a. All Waste Collectors and other Persons shall deliver all Commercial Waste, Industrial Waste, Construction and Demolition Debris, and Residential Waste generated within the County, other than Designated Recyclables or other

Recyclables separated at the point of generation for separate collection, to a County Facility, or, to the Authority landfill for disposal.

- b. All solid waste delivered in a plastic bag to a County Facility or to the Authority landfill for disposal shall be delivered in a clear or translucent bag such that the contents of the bag are easily identifiable for inspection of prohibited materials, including recyclable materials.
- c. No Waste Collector shall dispose of Solid Waste and/or recyclable at any County Facility without a Commercial Waste Permit. No Waste Collector shall dispose of Solid Waste at any other facility, excluding the Authority Landfill, without the prior authorization of and/or notification to the Department. Waste generators may transport, deliver and dispose of their own solid waste and/or recyclables at the County Facilities without the necessity of obtaining a permit, provided that the applicable tipping fees are paid.
- d. Anyone entering a County Facility to dispose of Solid Waste must adhere to the rules and regulations as posted and must follow the instructions of the attendant on duty.
- e. Nothing within this local law shall be construed at any time to restrict the ability of the Department to refuse to accept Hazardous Waste or other Prohibited Materials at any County Facility.
- f. The Department may, from time to time, provide alternative disposal means at the Authority Landfill or other County Facilities for selected Prohibited Materials.
- g. No Waste Collector or other Person shall dispose of Solid Waste at a County Facility unless such Person or entity shall pay the applicable tipping fee.

3. Disposal of Recyclables

- a. Nothing in this local law shall be construed to prohibit any Person generating Recyclables within the County from separating such recyclables from other wastes and making arrangements for the separate collection or delivery and sale of such materials under such terms as such Person may choose.
- b. No Person shall commingle Designated Recyclables with other Solid Waste and set such commingled Designated Recyclables and Solid Waste at curbside for collection by a Waste Collector.

- c. Owners of facilities open to the public and all organizers of public events are required to provide for the separate recovery, collection, and disposal of Recyclable Materials at the sites and/or events under their sponsorship.
- d. All landlords shall:
 - 1. Deliver information about tenants' source separation obligations to all tenants; and
 - 2. Incorporate in tenants' lease arrangements a condition that tenants must source separate Recyclable Materials in accordance with the provisions contained in this Law.
 - 3. For rental properties at which landlords maintain the responsibility for waste disposal, all landlords shall also provide, and pay for the costs of, adequate access to on-site recycling facilities and systems.
- e. No Waste Collector shall collect Designated Recyclables commingled with other Solid Wastes from any customer in the County.
- f. All Waste Collectors shall provide customers that place separated Designated Recyclables at curbside, collection of those Designated Recyclables, and shall not commingle such Designated Recyclables with other solid wastes.
- g. Designated Recyclables collected at curbside by a Waste Collector may be delivered to a County Facility or to another facility capable of sorting and marketing said material, provided that such facility is permitted or registered with the State, or approved by the Department.

SECTION IV. ENFORCEMENT

1. Administrative Sanctions

- a. Penalties and License Suspension/Revocation. The Department shall have the right to impose a civil penalty and/or suspend, condition or revoke any Commercial Waste Permit if the holder of such permit violates any of the provisions of this local law or any rules, regulations or requirements of the Department that may be adopted and modified from time to time in accordance with this local law.
- b. Civil penalties shall be assessed in an amount not to exceed \$500.00 for a first offense; up to \$1,500.00 for a second offense against the same provision of this

law within twelve (12) months of the first offense; and up to \$2,500.00 and/or suspension or revocation of any permit issued pursuant to the local law for a third offense against the same provision of laws within eighteen (18) months of the first offense. Civil penalties, or suspension or revocation of a Commercial Waste Permit may be imposed only after service of a written notice of violation upon the permit holder and, if demanded, a hearing as provided for in this local law.

2. Notice and Hearing

- a. Upon any violation of the provisions of this local law or any applicable rules, regulations or requirements of the Department, the Department may serve notice in person or by ordinary mail with certificate/confirmation of mailing sent to the residence of the offender, or in the case of a holder of any permit issued pursuant to this local law, to the address set forth in the permit application on file with the Department. Such notice shall state the Department's intent to revoke or suspend any permit, and/or impose a civil penalty upon the person charged. Any Person so notified may demand a hearing as allowed by this Section, by serving upon the Department a written request for a hearing; such request must be received by the Department within ten (10) days of the date of service of notice. Service by ordinary mail shall be presumed delivered ten (10) days from date mailed. Upon receipt of such demand, a hearing shall be scheduled and held at the offices of the Department.
- b. If the holder of a Commercial Waste Permit served with Notice pursuant to subsection (a) above fails to demand a hearing within the ten (10) day notice period provided for in Section IV.2.a, the revocation, suspension and/or surcharge provided for in the notice, shall be effective.
- c. Hearings shall be conducted by the Head of Solid Waste Department, and two (2) of the three (3) Board of Legislators who sit on the Solid Waste Committee; (determination of which committee members will serve to be decided among the three (3) legislative committee members). In any hearing conducted pursuant to this Section, the following shall apply:
 - 1) A stenographic record shall be kept. The cost of same is to be equally borne by the County and Person requesting the hearing.
 - 2) The permit holder may be represented by counsel.
 - 3) Witnesses shall be sworn and subject to cross-examination.
 - 4) Evidence submitted shall be relevant and may include evidence as to the past performance of the permit holder. Hearsay evidence

shall be admissible, but shall be accorded such weight as the Board of Hearing deems appropriate, consistent with its reliability.

- 5) Findings of fact shall be made by the Hearing Officer, in writing, upon a preponderance of the evidence.
 - 6) Upon a finding that a violation is proved, the Hearing Officer, shall impose such civil penalty, or order such suspension or revocation of the Commercial Waste Permit, as it deems appropriate. The determination of the Hearing Officer shall be final, and shall be subject to judicial review.
- d. Any person who shall set Designated Recyclables commingled with other solid waste out for collection shall be liable for a civil penalty of up to \$50.00 for the first violation, \$100.00 for a second violation committed within twelve (12) months of a prior violation, and \$200.00 for a third or subsequent violation committed within twelve (12) months of a prior violation.
 - e. Any Person who is ordered to pay a civil penalty for a violation of the provisions of this local law shall pay each penalty in full before any permit issued pursuant to this local law can be renewed or reinstated, unless otherwise ordered by the Hearing Officer.
 - f. Civil Enforcement. The County may enforce the orders and decisions of the Board of Hearing in a civil court of competent jurisdiction of the State of New York, including, but not limited to actions for declaratory and injunctive relief.

3. Presumptions

- a. The placement of any Container which is marked or identified with the name of any Waste Collector, at any location within the County, shall be presumptive evidence that said Waste Collector is providing solid waste collection services at said location within the County as of the date of said placement.
- b. The failure to deliver any Solid Waste to a facility designated by the Department pursuant to Section III (3)(a) within three (3) days of the collection of Solid Waste from any location within the County shall be presumptive evidence of a violation of Section III (3)(a) of this local law.

4. Enforcement Guidelines

The Department shall notify in writing each Waste Collector presently collecting, transporting and/or delivering Solid Waste generated or collected in the County of the adoption of the within local law and the effective date thereof. Such notice shall be delivered by first class mail at the last known address or business address or in person. Any such Waste Collector or Contractor so notified shall have sixty (60) days from the date of such notice to comply with the rules, regulations and requirements set forth herein. Thereafter, the Department shall implement the enforcement provisions of this local law as set forth herein.

SECTION V. EFFECTIVE DATE

This Local Law shall be effective one year upon all legal requirements being met.

SECTION VI. SEVERABILITY

If any part of this local law, as originally enacted or as amended from time to time, is found to be illegal, or its application to any Person or circumstance is held invalid, the remainder and the application of its provisions to Persons or circumstances other than those to which it is held invalid, shall not be affected thereby and shall remain in full force and effect.

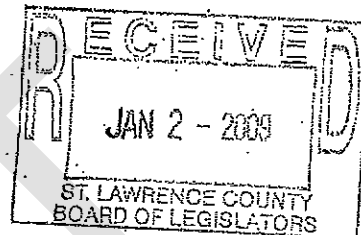


STATE OF NEW YORK
DEPARTMENT OF STATE
ONE COMMERCE PLAZA
99 WASHINGTON AVENUE
ALBANY, NY 12231-0001

DAVID A. PATERSON
GOVERNOR

LORRAINE A. CORTÉS-VÁZQUEZ
SECRETARY OF STATE

December 29, 2008



Suzanne Houmiel
Deputy Clerk
Board of Legislators
48 Court Street, Court House
Canton NY 13617-1169

RE: County of St. Lawrence, Local Law No. 3, 2008, filed on December 17, 2008

Dear Sir/Madam:

The above referenced material was received and filed by this office as indicated. Additional local law filing forms can be obtained from our website, www.dos.state.ny.us/corp/misc.html.

Sincerely,
Linda Lasch
Principal Clerk
State Records and Law Bureau
(518) 474-2755

December 8, 2008

Operations Committee: 11-10-2008

RESOLUTION NO. 419-2008

**ADOPTING PROPOSED LOCAL LAW D (NO.) FOR THE YEAR 2008
PROVIDING AN ORDERLY PROGRAM FOR THE COLLECTION,
TRANSPORTATION, AND DISPOSAL OF SOLID WASTE AND RECYCLABLES IN
ORDER TO PROMOTE THE SAFETY, HEALTH, WELFARE, AND CONVENIENCE
OF THE CITIZENS OF ST. LAWRENCE COUNTY**

By Ms. Brothers, Chair, Operations Committee

BE IT ENACTED, by the Board of Legislators of the County of St. Lawrence, New York as follows:

I. LEGISLATIVE FINDINGS

The Board of Legislators of the County of St. Lawrence, upon consideration and in support of the adoption of Local Law D (No.) for the year 2008, hereby finds and declares:

1. The County in its capacity pursuant to Environmental Conservation Law § 27-0107 as the entity responsible for the preparation and implementation of a local solid waste management plan under the laws and rules of the State of New York, has determined that a comprehensive ordinance regulating the collection and disposal of solid waste generated within the County is in the public interest.
2. The safe and proper disposal of the solid wastes generated by the people of St. Lawrence County long been and remains a matter of serious public concern. On August 26, 1993, in order to provide for reliable, economical and environmentally sound long term waste disposal capacity for the County and the region, the County entered into a Solid Waste Management Participation Agreement with the Counties of Lewis and Jefferson, the City of Watertown, the Town of Rodman and the Development Authority of the North Country (DANC), which Agreement incorporated by reference a certain Solid Waste Management Agreement executed on October 1, 1986 by the aforementioned parties, with the exception of St. Lawrence County. The purpose of these agreements was to provide certain publicly owned solid waste disposal facilities by DANC for the use of the participating municipalities. Pursuant to these agreements, the Counties of St. Lawrence, Lewis and Jefferson, together with the City of Watertown, reciprocally pledged to deliver or cause to be delivered, all of the solid waste generated within their respective jurisdictions, subject to the provisions for waste reduction and recycling otherwise provided for by state and local law, to the facilities constructed and operated by DANC for their mutual benefit. The mutual promises by each of the participating municipalities and DANC serve to reduce the per ton costs of solid waste disposal to all citizens of the region.
3. In 1992 St. Lawrence County prepared a Comprehensive Solid Waste Management Plan approved by the New York State Department of Environmental Conservation on April

December 8, 2008

10, 1992. The County hereby reaffirms the objectives set forth in the plan, as amended, to reduce, reuse and recycle so much of the waste stream of St. Lawrence County as is feasible, and to landfill the remainder in an environmentally secure public landfill facility.

4. The County hereby finds that regulation to direct the flow of solid waste to facilities operated by the County is beneficial in several ways. First, such direction aids in planning for the County's future waste management needs by providing an accurate assessment of the type and quantity of waste generated by the people of St. Lawrence County. Second, said direction ensures that waste that is not recycled will be disposed of in an economical and environmentally secure manner at the public facilities provided by DANC. Third, said direction ensures that all persons engaged in the collection of solid waste within the County will be subject to the same uniform rules and fee structures. Fourth, said direction will ensure that the public waste system and facilities constructed to manage the waste of the County of St. Lawrence will receive both the wastes it was designed for and the revenues necessary to support itself from fees charged to users.
5. The County further determines that In order to provide for the safe and effective collection of solid waste and recyclables, it is in the public interest to establish a regulatory system for the granting of permits to collect and transport waste and recyclables within the County.
6. Pursuant to the above findings, the Board hereby adopts a Local Law regulating the disposal of solid waste in St. Lawrence County.

II. DEFINITIONS

1. **Board of Hearing** shall mean the board described in Section IV of this local law.
2. **Commercial Waste Permit** shall mean the permit issued pursuant to Section III.1 of this local law.
3. **Construction and Demolition Debris** shall mean Solid Waste resulting from construction, remodeling, repair and demolition of structures, roads, buildings and land clearing. Such wastes include, but are not limited to, bricks, concrete and other masonry materials, soil, rock, lumber, road spoils, paving material and tree and bush stumps.
4. **Container** shall mean a container provided by a Waste Collector for use in the collection of Solid Waste and/or Recyclables within the County.
5. **County** shall mean St. Lawrence County, New York, a municipal corporation of the State of New York, with offices at Canton, New York.
6. **County Facility** shall mean any transfer station or other facility for the receipt of solid waste and recyclables owned and operated, or caused to be operated, by the County.
7. **Department** shall mean the St. Lawrence County Solid Waste Department, its successors and assigns.
8. **Development Authority of the North Country (DANC)** shall mean the public Authority created by § 2703 of the Public Authorities Law of the State of New York with offices located in Watertown N.Y.

December 8, 2008

9. **Designated Recyclables** shall mean recyclable materials, as specifically designated by the Board of Legislators by resolution and which shall be separated from the Solid Waste stream and accepted at County Facilities.
10. **Hazardous Waste** shall mean those materials, substances, or wastes including, but not limited to, pesticides and containers used for pesticides, other waste which appears on the list or satisfies characteristics of hazardous waste promulgated by the New York State Commissioner of the Department of Environmental Conservation, and any other material, determined now or in the future, to be hazardous by State or Federal rule, regulation and/or statute.
11. **Infectious Waste** shall have the meaning specified in 6 NYCRR 360-1.2 as the same may be amended, superseded or replaced.
12. **Municipality** shall mean a County, Town, City or Village.
13. **Person or Persons** shall mean any individual, company, partnership, association, firm, corporation, municipality or any other entity.
14. **Processor** shall mean a primary user of the particular material such as Recyclables, including but not limited to glass factories, de-tinners, plastic recovery facilities, paper mills or consolidators of such materials.
15. **Prohibited Materials** shall mean materials which shall not be accepted at a County Facility. The list of Prohibited Materials may be established and modified from time to time by resolution of the Board of Legislators.
16. **Recyclables** shall mean such material which under any applicable law or regulation, is not Hazardous Waste and which can be reasonably separated from the Solid Waste stream and held for its material recycling or reuse value.
17. **Refuse** shall mean putrescible and incidental non-putrescible Solid Waste including, but not limited to, animal, vegetable and paper waste. Refuse originates primarily in homes, businesses and restaurants, and has characteristics similar to that of Solid Waste collected and disposed of as part of normal residential and commercial collections in the County.
18. **Resident** shall mean any individual who is a legal resident of the County or any individual who is a temporary resident of the County.
19. **Residential Waste** shall mean Solid Waste generated from all houses, apartments and other residential dwellings, including, but not limited to, all single family dwellings and multifamily dwellings in the County.
20. **Solid Waste** shall have the meaning specified in 6 NYCRR Part 360-1.2 as the same may be amended, superseded or replaced.
21. **State** shall mean the State of New York.
22. **Transfer Station** shall mean a facility used for the consolidation of deliveries of Solid Waste by any Person in order to prepare such Solid Waste material for transport to a disposal facility.
23. **Waste Collector** shall mean any individual, association, partnership, firm, corporation, not-for-profit organization, or any other Person engaged in the business of collection, pickup, transfer, removal and/or disposal of Solid Waste and/or Recyclables for a fee.

III. ADMINISTRATION

1. The Department, or its successor, shall be primarily responsible for all ministerial and administrative duties described or reasonably required by the terms of this local law.

December 8, 2008

2. The Department, or its successor, shall administer the program of registering and permitting all Waste Collectors and other Persons collecting, transporting or disposing of Solid Waste and/or Recyclables generated within the County. This includes the issuance, renewal, and revocation of all permits described in this local law.
3. The Department, or its successor, shall promulgate rules and regulations in connection with the operation of the County Landfill or any other Facility.
4. The Department, or its successors, shall issue warning notices and initiate proceedings pursuant to Section IV of this local law to prosecute violations of this local law.
5. The Department, or its successor, may encourage and conduct studies, investigations and research relating to various aspects of Solid Waste management as it deems necessary or as requested by the Board of Legislators or Committee.

IV. STANDARDS AND REGULATIONS

1. Commercial Waste Permit Requirements
 - a) No Waste Collector shall collect, transport or dispose of Solid Waste and/or Recyclables generated within the County without obtaining a Commercial Waste Permit issued by the County. Each day during which a Waste Collector collects, transports or disposes of Solid Waste or Recyclables generated within the County without a Commercial Waste Permit shall be considered a separate violation of this Section.
 - b) All applications for Commercial Waste Permits shall be in writing and shall contain such information as requested by the Department, but at a minimum, as set forth in this local law. Such applications shall include a list that identifies all vehicles, that the applicant intends to utilize for the collection or transportation of Solid Waste and/or Recyclables in the County, along with the cubic yard capacity for each vehicle. The Department will assign an identification number for each vehicle, which may be the same number issued to the vehicle by DANC for use at DANC facilities. All Commercial Waste Permit information shall be verified by the applicant as required by this local law and the Department. The applicant shall pay the required permit fee as set forth in this local law.
 - c) Each applicant other than a Municipality shall be required to pay a Commercial Waste Permit fee in an amount set by resolution of the Board of Legislators and amended as necessary from time to time. Municipalities shall not be required to pay permit fees identified in this Section III, but shall be required to comply with all other requirements of this Local Law.
 - d) Upon receipt of the application and the payment of the Commercial Waste Permit fee, the Department shall thereupon issue the applicant a Commercial Waste Permit and vehicle decal so long as the applicant is otherwise deemed by the Department to be in compliance with this local law and related requirements of the Department. A Commercial Waste Permit shall expire on the next December 31 following the date of issue. Upon issuance of the Commercial Waste Permit the permit holder shall affix the vehicle decal to the inside rear bottom corner of the driver's window in each and every vehicle, on which shall be set forth clearly the official number of such Commercial Waste Permit and/or the license plate number of the vehicle to which the decal is affixed.

December 8, 2008

- e) Renewal of Commercial Waste Permits shall be in the same manner and subject to the same conditions as original Commercial Waste Permits, and also shall be subject to any additional requirements in effect at the time of application for renewal as specified by the Department or the Board of Legislators.
- f) Whenever satisfactory proof, such as by means of an affidavit, is submitted to the Department that a Commercial Waste Permit or decal issued for the purpose set forth in this local law has been lost or destroyed, the Department shall, upon payment by the applicant of a fee set by resolution of the Board of Legislators and amended as necessary from time to time, issue a new Commercial Waste Permit in lieu of the one that has been lost or destroyed.
- g) No Commercial Waste Permit issued pursuant to the provisions of this local law shall be transferable.
- h) Commercial Waste Permit holders who distribute waste containers or roll-off containers to customers in the County shall cause such containers to be clearly labeled, in letters not less than 4 inches in height, with the name and telephone number of the permit holder.
- i) The Department, pursuant to Section IV of this local law, shall have the power to suspend or revoke a Commercial Waste Permit granted or renewed pursuant to this local law for any violation of any provision of this local law or any applicable rule, regulation, code or ordinance relating to the collection, handling, hauling or disposal of Solid Waste and/or Recyclables including, but not limited to, those promulgated by the Department.
- j) All collection, transportation and/or disposal of Solid Waste and/or Recyclables shall be in strict conformance with the rules and regulations prescribed in this local law and as such rules and regulations may hereafter be amended or supplemented by the Department.
- k) All vehicles used in the collection, transportation and/or disposal of Solid Waste and/or Recyclables shall be maintained in a sanitary condition the name of the Commercial Waste Permit holder shall be readily visible on all vehicles. Operation of vehicles shall be done in such a manner as to prevent spilling or loss of contents.
- l) Any Commercial Waste Permit issued pursuant to this local law shall be in the nature of a privilege subject to the terms and conditions set forth in this local law and as amended or supplemented by the Board of Legislators, and shall not be deemed to create a property interest with respect to the Commercial Waste Permit in the holder.
- m) All such Commercial Waste Permit requirements specified herein, including, but not limited to, Commercial Waste Permit fees may be amended or adjusted from time to time by resolution of the Board of Legislators.

2. Disposal of Solid Waste

- a) All Waste Collectors and other Persons shall deliver all Solid Waste and Construction and Demolition Debris generated within the County, other than Designated Recyclables or Recyclables separated at the point of generation for separate collection, to any of the following designated facilities:

December 8, 2008

- i) County Facility at Ogdensburg (Arnold-Wagner Road);
- ii) County Facility at Massena (Dump Road off Route 420 toward Winthrop);
- iii) County Facility at Gouverneur (US Route 11);
- iv) County Facility at Star Lake (Route 3);
- v) Town of Parishville Facility
- vi) Town of Colton Facility
- vii) DANC Landfill, Rodman, New York

Commercial Waste Permit holders shall not dispose of any such Solid Waste at any other facility located within or outside of the County unless designated and permitted by the Department.

- b) Solid Waste generated outside the County will not be accepted at County Facilities except pursuant to approval by the Board of Legislators.
- c) Anyone entering a County Facility to dispose of Solid Waste must adhere to the rules and regulations as posted and must follow the instructions of the attendant on duty.
- d) All Commercial Waste Permit holders may dispose of Solid Waste at County Facilities.
- e) Nothing within this local law shall be construed at any time to restrict the ability of the Department to refuse to accept Hazardous Waste or other Prohibited Materials at a County Facility.
- f) No Waste Collector or other Person shall dispose of Solid Waste at a County Facility unless such Person or entity shall pay the applicable tipping fee.
- g) Tipping fees at County Facilities shall be set by resolution of the Board of Legislators and amended as necessary from time to time.

V. ENFORCEMENT

I. Presumptions

There shall be rebuttable presumptions in the enforcement of this local law that:

- a) The placement of any Container which is marked or identified with the name of any Waste Collector, at any location within the County, shall be presumptive evidence that said Waste Collector is providing solid waste collection services at said location within the County as of the date of said placement.
- b) Evidence of Solid Waste in a Container located in the County as described in Section IV(1)(a) above, and subsequent observation of the same Container empty, shall be presumptive evidence that Solid Waste was collected from the Container by the Waste Collector whose name is marked on the Container.
- c) The failure to deliver any Solid Waste to a facility designated by the department pursuant to Section III(3)(a) within three days of the collection of Solid Waste from any location within the County shall be presumptive evidence of a violation of Section III (3)(a) of this local law.

December 8, 2008

2. Administrative Sanctions

- a) Penalties and License Suspension/Revocation. The Department shall have the right to impose a civil penalty and/or suspend or revoke any Commercial Waste Permit if the holder of such permit violates any of the provisions of this local law or any rules, regulations or requirements of the Department that may be adopted and modified from time to time in accordance with this local law. Civil penalties shall be assessed in an amount sufficient to compensate the County for any injury suffered, or any costs incurred by the County as a result of the violation. Civil penalties, or suspension or revocation of a Commercial Waste Permit may be imposed only after service of a written notice of violation upon the permit holder and, if demanded, a hearing as provided for in this local law.
- b) Notice. Upon any violation of the provisions of this local law or any applicable rules, regulations or requirements of the Department, the Department may serve notice in person or by ordinary mail sent to the holder of any permit issued pursuant to this local law, at the address set forth in the permit application on file with the Department. Such notice shall state the Department's intent to revoke or suspend, and/or impose a civil penalty upon the permit holder. Any holder of a Commercial Waste Permit may demand a hearing as allowed by Section IV.2.a of this local law, by serving upon the Department a written request for a hearing; such request must be received by the Department within ten days of the date of service of notice. Upon receipt of such demand, a hearing shall be scheduled and held at the offices of the Department.
- c) If the holder of a Commercial Waste Permit served with Notice pursuant to subsection (b) above fails to demand a hearing within the ten-day notice period provided for in Section IV.2.b, the revocation, suspension and/or surcharge provided for in the notice, shall be effective.
- d) Hearings. Hearings pursuant to this Section IV(2) shall be conducted by a Board of Hearing. The Board of Hearing shall consist of three persons designated by the Board of Legislators. In any hearing conducted pursuant to this Section, the following shall apply:
 - i) A stenographic record shall be kept.
 - ii) The permit holder may be represented by counsel.
 - iii) Witnesses shall be sworn and subject to cross-examination.
 - iv) Evidence submitted shall be relevant and may include evidence as to the past performance of the permit holder. Hearsay evidence shall be admissible, but shall be accorded such weight as the Board of Hearing deems appropriate, consistent with its reliability.
 - v) Findings of fact shall be made by a majority of the Board of Hearing, in writing, upon a preponderance of the evidence.
 - vi) Upon a finding that a violation is proved, the Board of Hearing, by majority vote, shall impose such civil penalty, or order such suspension or revocation of the Commercial Waste Permit, as it deems appropriate. The determination of the Board of Hearing shall be final, and shall be subject to judicial review.

December 8, 2008

e) Any Person who is ordered to pay a civil penalty for a violation of the provisions of this local law shall pay such penalty in full before any permit issued pursuant to this local law can be renewed or reinstated, unless otherwise ordered by the Board of Hearing.

3. Civil Enforcement. The County may enforce the orders and decisions of the Board of Hearing in a civil court of competent jurisdiction of the State of New York, including, but not limited to actions for declaratory and injunctive relief.

4. Enforcement Guidelines

The Department may establish and modify from time to time enforcement guidelines that have been adopted, and that may be amended from time to time, by resolution of the Board of Legislators with regard to any provision of this local law.

VI. EFFECTIVE DATE

This article is effective upon passage by the St. Lawrence County Board of Legislators and filing with the Department of State pursuant to the Municipal Home Rule Law.

VII. SEVERABILITY

If any part of this local law, as originally enacted or as amended from time to time, is found to be illegal, or its application to any Person or circumstance is held invalid, the remainder and the application of its provisions to Persons or circumstances other than those to which it is held invalid, shall not be affected thereby and shall remain in full force and effect.

STATE OF NEW YORK)
) ss:
COUNTY OF ST. LAWRENCE)

I, Suzanne M. Houmiel, Deputy Clerk to the St. Lawrence County Board of Legislators, DO HEREBY CERTIFY, that I have compared this copy of Resolution No. 419-2008 "Adopting Proposed Local Law D (No.) for the Year 2008 Providing an Orderly Program for the Collection, Transportation, and Disposal of Solid Waste and Recyclables In Order to Promote the Safety, Health, Welfare, and Convenience of the Citizens of St. Lawrence County" adopted December 8, 2008, with the original record in this office and that the same is a correct transcript thereof and of the whole of said original record.

Suzanne M. Houmiel
Suzanne M. Houmiel, Deputy Clerk
St. Lawrence County Board of Legislators
February 3, 2009

Appendix E – 2025-2034 Implementation Schedule

DRAFT

DANC Planning Unit Local Solid Waste Management Plan

2026-2035

Program Strategy	Task Name	2026		2027		2028		2029		2030		2031		2032		2033		2034		2035	
		H1	H2	H1	H2	H1	H2	H1	H2	H1	H2	H1	H2	H1	H2	H1	H2	H1	H2	H1	H2
		Organics Management																			
1) Continue current yard waste program	Planning unit will continue operations of the Counties yard waste programs which diverts leaves and brush	[Orange bar]																			
	Planning unit will produce a useful by-product available to the Counties for landscaping purposes	[Orange bar]																			
	Recycling Coordinator provides continuous education to residents and businesses on the yard waste program to increase participation	[Orange bar]																			
2) Expand organic diversion to include backyard composting	Recycling Coordinator develops backyard composting resources and workshops to tackle organic food scrap waste	[Orange bar]																			
	Recycling Coordinator offers and promotes backyard composting workshops to residents through events and presentations	[Orange bar]																			
3) Explore other organics diversion programs	Planning unit identifies local large generators of organic waste and determines available tonnage	[Orange bar]																			
	Planning unit works with identified generators to explore availability and feasibility of local waste diversion efforts	[Orange bar]																			
	Planning unit determines level of involvement to support large generators organics management programs	[Orange bar]																			
	Planning unit monitors new opportunities for organics management programs	[Orange bar]																			

Education & Outreach

1) Increase Recycling Participation and Lower Contamination Rates	Recycling Coordinator offers continuous education and publicity on proper recycling to residents and encourages compliance with counties recycling programs	[Blue bar]																			
	Recycling Coordinator analyzes data from outreach, program observations, and MRF contamination to plan targeted recycling education campaigns	[Blue bar]																			
	Recycling Coordinator promotes recycling campaigns through social media to highlight specific materials such as HDPE cardboard and PET	[Blue bar]																			
	Recycling Coordinator investigates and addresses sources of contamination in materials sent to the MRF	[Blue bar]																			
	Recycling Coordinator develops and maintains a list of local school districts and college/university contacts along with their waste handling practices to identify areas for improvement	[Blue bar]																			
	Recycling Coordinator identifies potential partnerships, collaborations or grant opportunities to increase recycling participation within schools and colleges	[Blue bar]																			
	Recycling Coordinator offers recycling programming through assemblies and class presentations/tours for schools/colleges	[Blue bar]																			
	Recycling Coordinator expands recycling outreach efforts to local organizations, events and businesses	[Blue bar]																			
	Recycling Coordinator maintains department's website and educational materials with accurate recycling information	[Blue bar]																			
	Recycling Coordinator works with local haulers to increase recycling participation and help haulers educate residents about local recycling rules	[Blue bar]																			

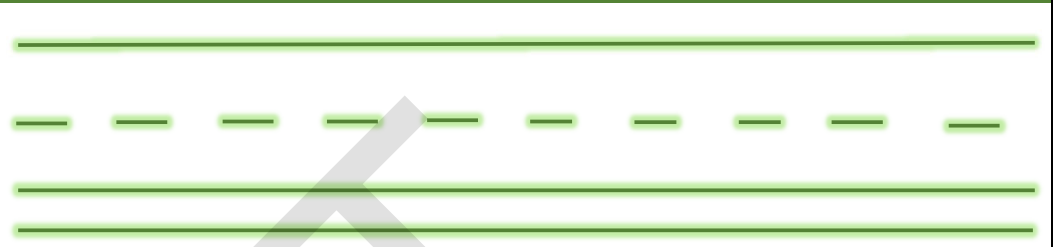
DANC Planning Unit Local Solid Waste Management Plan

2026-2035

Program Strategy	Task Name	2026		2027		2028		2029		2030		2031		2032		2033		2034		2035	
		H1	H2	H1	H2	H1	H2	H1	H2	H1	H2	H1	H2	H1	H2	H1	H2	H1	H2	H1	H2

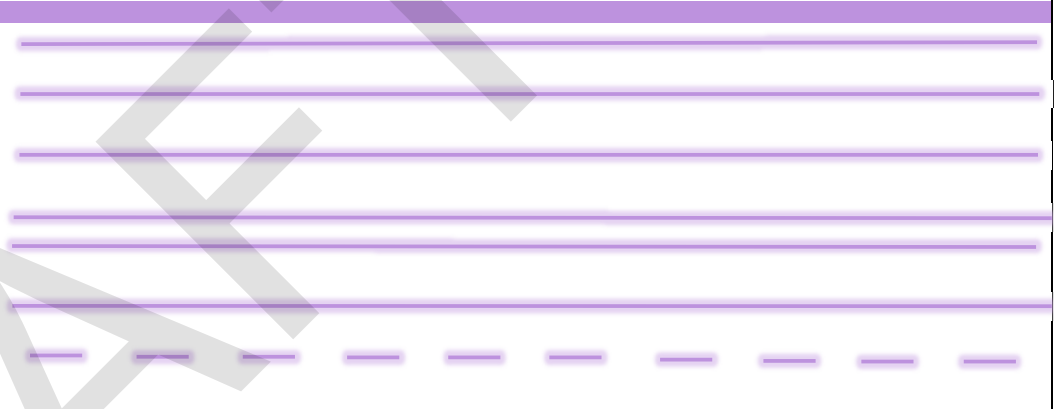
Special Recycling Programs

1) Continue special recycling programs	Planning unit continues to oversee and promote special programs such as the electronic waste program, household hazardous waste program, unused medication program and evaluates program efficiency and feasibility
2) Research financial opportunities to support recycling programs	Apply for grant funding to support recycling programs such as the household hazardous waste grant and the municipal waste reduction and recycling program grant
3) Expand partnerships and collaborations for special recycling programs	Explore collaboration opportunities with other partners to oversee special waste programs
4) Support State and Federal legislation	Planning unit will support initiatives designed to reduce waste such as Extended Producer Responsibility legislation



Partnerships

1) Increase hauler participation	Planning unit will maintain ongoing communication with local haulers about permit requirements and recycling program rules
2) Identify sources of contamination	Planning unit will maintain ongoing communication with the MRFs to observe common contaminants and identify areas of education and outreach
3) Increase recycling awareness	Planning unit will maintain ongoing communication with towns and villages to promote special events and recycling resources through their social media channels
4) Continue partnership with North Ward Environmental to oversee HHW collection	Planning unit renews contract with North Ward Environmental to oversee the collection of HHW
5) Evaluate electronic waste program	Planning unit tracks changes in the electronic waste tonnage and researches opportunities to support and fund the residential e-waste collection program Planning unit reviews and renews contract with Kimco to oversee e-waste collection
6) Stay involved in local, statewide and national conversations regarding solid waste management	Attend solid waste and recycling conferences such as NYSAR3 and the NY Federation.



Appendix F – 2025-2034 DEC Calculator

DRAFT

Development Authority of the North Country (DANC)

2025-2034

Year	2025	2026	2027	2028	2029	2030	2031	2032	2033	2034	2035	2036
Projected MSW Generation (Tons/yr)	180,842	178,791	176,764	174,759	172,778	170,819	168,882	166,967	165,074	163,202	00,000	00,000
MSW Diverted (Tons/yr)	30,234	30,190	30,113	30,103	30,059	30,015	29,971	29,925	29,886	29,841	29,842	30,377

		2024				2025	2026	2027	2028	2029	2030	2031	2032	2033	2034	2035	2036
		MSW Materials Composition (%)	MSW Generated (Tons)	MSW Diverted (Tons)	% MSW Diverted	% MSW Diverted	% MSW Diverted	% MSW Diverted	% MSW Diverted	% MSW Diverted	% MSW Diverted	% MSW Diverted	% MSW Diverted	% MSW Diverted	% MSW Diverted	% MSW Diverted	
Material		100.0%	181,154	35,781	19.8%	16.7%	16.9%	17.0%	17.2%	17.4%	17.6%	17.7%	17.9%	18.1%	18.3%	18.5%	19.0%
Paper	Newspaper	3.6%	6,591	2,910	44.2%	42.4%	42.8%	43.3%	43.7%	44.1%	44.6%	45.0%	45.5%	45.9%	46.4%	46.9%	47.3%
	Corrugated Cardboard	9.9%	18,021	10,542	58.5%	88.9%	89.8%	90.7%	91.6%	92.5%	93.4%	94.3%	95.3%	96.2%	97.2%	98.2%	99.2%
	Other Recyclable Paper (Total)	10.8%	19,526	4,032	20.6%	2.0%	2.0%	2.1%	2.1%	2.1%	2.1%	2.1%	2.2%	2.2%	2.2%	2.2%	2.3%
	Other Compostable Paper	6.6%	11,969	0	0.0%	1.0%	1.0%	1.0%	1.0%	1.1%	1.1%	1.1%	1.1%	1.1%	1.1%	1.1%	1.1%
	Total Paper	31.0%	56,107	17,484	31.2%	34.4%	34.8%	35.1%	35.5%	35.8%	36.2%	36.6%	36.9%	37.3%	37.7%	38.1%	38.4%
Metal	Ferrous/Aluminum Containers (Total)	1.8%	3,189	192	6.0%	9.7%	9.8%	9.9%	10.0%	10.1%	10.2%	10.3%	10.4%	10.5%	10.6%	10.7%	10.8%
	Other Ferrous Metals	5.3%	9,674	1,896	19.6%	24.5%	24.8%	25.0%	25.3%	25.5%	25.8%	26.1%	26.3%	26.6%	26.8%	27.1%	27.4%
	Other Non-Ferrous Metals (Total)	1.2%	2,254	235	10.4%	16.2%	16.3%	16.5%	16.6%	16.8%	17.0%	17.2%	17.3%	17.5%	17.7%	17.9%	18.0%
	Total Metals	8.3%	15,116	2,323	15.4%	20.2%	20.4%	20.6%	20.8%	21.0%	21.2%	21.4%	21.6%	21.8%	22.0%	22.3%	22.5%
Plastic	PET Containers	0.9%	1,656	1,274	76.9%	25.8%	26.0%	24.2%	26.5%	26.8%	27.1%	27.3%	27.6%	27.9%	28.2%	28.4%	28.7%
	HDPE Containers	0.8%	1,534	1,153	75.2%	44.1%	44.6%	45.0%	45.5%	45.9%	46.4%	46.9%	47.3%	47.9%	48.3%	48.8%	49.2%
	Other Plastic (3-7) Containers	0.2%	323	177	54.8%	3.2%	3.3%	3.3%	3.3%	3.4%	3.4%	3.4%	3.5%	3.5%	3.5%	3.6%	3.6%
	Film Plastic	5.7%	10,361	0	0.0%	6.7%	6.7%	6.8%	6.9%	6.9%	7.0%	7.1%	7.1%	7.2%	7.3%	7.4%	7.4%
	Other Plastic (Total)	6.1%	11,007	577	5.2%	0.5%	0.5%	0.5%	0.5%	0.5%	0.5%	0.5%	0.5%	0.5%	0.6%	0.6%	0.6%
Total Plastics	13.7%	24,880	3,181	12.8%	7.5%	7.6%	7.5%	7.7%	7.8%	7.9%	7.9%	8.0%	8.1%	8.2%	8.3%	8.3%	
Glass	Glass Bottles, Jars and Containers	3.9%	7,091	3,275	46.2%	5.7%	5.7%	5.8%	5.8%	5.9%	5.9%	6.0%	6.1%	6.1%	6.2%	6.2%	6.3%
	Other Glass (Flat glass, dishware, light bulbs, etc.)	0.4%	735	0	0.0%	0.0%	0.0%	0.0%	0.0%	0.0%	0.0%	0.0%	0.0%	0.0%	0.0%	0.0%	0.0%
	Total Glass	4.3%	7,826	3,275	41.8%	5.1%	5.2%	5.2%	5.3%	5.3%	5.4%	5.4%	5.5%	5.5%	5.6%	5.7%	5.7%
Organics	Food Scraps	13.6%	24,554	4,832	19.7%	0.0%	0.0%	0.0%	0.0%	0.0%	0.0%	0.0%	0.0%	0.0%	0.0%	0.0%	0.0%
	Leaves and Grass / Pruning and Trimmings	6.1%	11,033	2,079	18.8%	27.2%	27.4%	27.7%	28.0%	28.3%	28.6%	28.8%	29.1%	29.4%	29.7%	30.0%	30.3%
	Total Organics	19.6%	35,586	6,911	19.4%	8.4%	8.5%	8.6%	8.7%	8.8%	8.9%	8.9%	9.0%	9.1%	9.2%	9.3%	9.4%
Textiles	Clothing Footwear, Towels, Sheets	3.9%	7,004	684	9.8%	10.2%	10.3%	10.4%	10.5%	10.6%	10.7%	10.8%	10.9%	11.0%	11.2%	11.3%	11.4%
	Carpet	1.5%	2,628	0	0.0%	0.0%	0.0%	0.0%	0.0%	0.0%	0.0%	0.0%	0.0%	0.0%	0.0%	0.0%	0.0%
	Total Textiles	5.3%	9,632	684	7.1%	7.4%	7.5%	7.6%	7.6%	7.7%	7.8%	7.9%	8.0%	8.0%	8.1%	8.2%	8.3%
Wood	Total Wood (Pallets, crates, adulterated and non-adulterated wood)	4.9%	8,833	0	0.0%	0.0%	0.0%	0.0%	0.0%	0.0%	0.0%	0.0%	0.0%	0.0%	0.0%	0.0%	
Miscellaneous	DIY Construction & Renovation Materials	5.6%	10,184	0	0.0%	0.0%	0.0%	0.0%	0.0%	0.0%	0.0%	0.0%	0.0%	0.0%	0.0%	0.0%	
	Diapers	1.6%	2,908	0	0.0%	0.0%	0.0%	0.0%	0.0%	0.0%	0.0%	0.0%	0.0%	0.0%	0.0%	0.0%	
	Electronics	1.5%	2,700	261	9.7%	10.1%	10.2%	10.3%	10.4%	10.5%	10.6%	10.7%	10.8%	10.9%	11.0%	11.2%	11.3%
	Tires	1.7%	3,042	1,355	44.5%	46.8%	47.2%	47.7%	48.2%	48.7%	49.1%	49.6%	50.1%	50.6%	51.1%	51.7%	52.2%
	HHW	0.3%	588	231	39.3%	41.2%	41.6%	42.0%	42.5%	42.9%	43.3%	43.7%	44.2%	44.6%	45.1%	45.5%	46.0%
	Soils and Fines	0.4%	694	0	0.0%	0.0%	0.0%	0.0%	0.0%	0.0%	0.0%	0.0%	0.0%	0.0%	0.0%	0.0%	0.0%
	Other Composite Materials - Durable and/or inert	1.7%	3,057	76	2.5%	0.0%	0.0%	0.0%	0.0%	0.0%	0.0%	0.0%	0.0%	0.0%	0.0%	0.0%	0.0%
	Total Miscellaneous	12.8%	23,174	1,923	8.3%	8.4%	8.4%	8.5%	8.6%	8.7%	8.8%	8.9%	9.0%	9.1%	9.1%	9.3%	9.3%

	Material	2024			2025			2026			2027			2028			
		MSW Materials Composition (%)	MSW Generated (Tons)	MSW Diverted (Tons)	% MSW Diverted	MSW generated (Tons)	MSW Diverted	% MSW Diverted	MSW generated (Tons)	MSW Diverted	% MSW Diverted	MSW generated (Tons)	MSW Diverted	% MSW Diverted	MSW generated (Tons)	MSW Diverted	% MSW Diverted
	Material	100.00%	181,154	35,781	19.8%	180,842	30,234	16.7%	178,791	30,190	17%	176,764	30,113	17.0%	174,759	30,103	17.2%
Paper	Newspaper	3.64%	6,591	2,910	44.2%	6,580	2,791	42.4%	6,505	2,787	43%	6,431	2,783	43.3%	6,358	2,779	43.7%
	Corrugated Cardboard	9.95%	18,021	10,542	58.5%	17,990	15,989	88.9%	17,786	15,966	90%	17,584	15,943	90.7%	17,385	15,920	91.6%
	Other Recyclable Paper (Total)	10.78%	19,526	4,032	20.6%	19,492	394	2.0%	19,271	393	2%	19,053	392	2.1%	18,837	392	2.1%
	Other Compostable Paper	6.61%	11,969	0	0.0%	11,948	121	1.0%	11,813	120	1%	11,679	120	1.0%	11,546	120	1.0%
	Total Paper	30.97%	56,107	17,484	31.2%	56,010	19,295	34.4%	55,375	19,266	35%	54,747	19,238	35.1%	54,126	19,211	35.5%
Metal	Ferrous/Aluminum Containers (Total)	1.76%	3,189	192	6.0%	3,183	309	9.7%	3,147	308	10%	3,111	308	9.9%	3,076	307	10.0%
	Other Ferrous Metals	5.34%	9,674	1,896	19.6%	9,657	2,370	24.5%	9,547	2,367	25%	9,439	2,363	25.0%	9,332	2,360	25.3%
	Other Non-Ferrous Metals (Total)	1.24%	2,254	235	10.4%	2,250	364	16.2%	2,225	363	16%	2,199	363	16.5%	2,174	362	16.6%
	Total Metals	8.34%	15,116	2,323	15.4%	15,090	3,042	20.2%	14,919	3,038	20%	14,750	3,033	20.6%	14,583	3,029	20.8%
Plastic	PET Containers	0.91%	1,656	1,274	76.9%	1,653	426	25.8%	1,634	425	26%	1,616	392	24.2%	1,598	424	26.5%
	HDPE Containers	0.85%	1,534	1,153	75.2%	1,531	676	44.1%	1,514	675	45%	1,496	674	45.0%	1,479	673	45.5%
	Other Plastic (3-7) Containers	0.18%	323	177	54.8%	322	10	3.2%	319	10	3%	315	10	3.3%	312	10	3.3%
	Film Plastic	5.72%	10,361	0	0.0%	10,343	689	6.7%	10,226	688	7%	10,110	687	6.8%	9,995	686	6.9%
	Other Plastic (Total)	6.08%	11,007	577	5.2%	10,988	55	0.5%	10,863	55	1%	10,740	55	0.5%	10,618	55	0.5%
	Total Plastics	13.73%	24,880	3,181	12.8%	24,837	1,857	7.5%	24,556	1,854	8%	24,277	1,819	7.5%	24,002	1,849	7.7%
Glass	Glass Bottles, Jars and Containers	3.91%	7,091	3,275	46.2%	7,078	400	5.7%	6,998	400	6%	6,919	399	5.8%	6,840	399	5.8%
	Other Glass (Flat glass, dishware, light bulbs, etc.)	0.41%	735	0	0.0%	734	0	0.0%	726	0	0%	717	0	0.0%	709	0	0.0%
	Total Glass	4.32%	7,826	3,275	41.8%	7,813	400	5.1%	7,724	400	5%	7,636	399	5.2%	7,550	399	5.3%
Organics	Food Scraps	13.55%	24,554	4,832	19.7%	24,511	0	0.0%	24,233	0	0%	23,959	0	0.0%	23,687	0	0.0%
	Leaves and Grass / Pruning and Trimmings	6.09%	11,033	2,079	18.8%	11,014	2,992	27.2%	10,889	2,988	27%	10,765	2,984	27.7%	10,643	2,979	28.0%
	Total Organics	19.64%	35,586	6,911	19.4%	35,525	2,992	8.4%	35,122	2,988	9%	34,724	2,984	8.6%	34,330	2,979	8.7%
Textiles	Clothing Footwear, Towels, Sheets	3.87%	7,004	684	9.8%	6,992	713	10.2%	6,913	712	10%	6,834	711	10.4%	6,757	710	10.5%
	Carpet	1.45%	2,628	0	0.0%	2,623	0	0.0%	2,594	0	0%	2,564	0	0.0%	2,535	0	0.0%
	Total Textiles	5.32%	9,632	684	7.1%	9,615	713	7.4%	9,506	712	7%	9,398	711	7.6%	9,292	710	7.6%
Wood	Total Wood (Pallets, crates, adulterated and non-recyclable)	4.88%	8,833	0	0.0%	8,817	0	0.0%	8,717	0	0%	8,619	0	0.0%	8,521	0	0.0%
Miscellaneous	DIY Construction & Renovation Materials	5.62%	10,184	0	0.0%	10,166	0	0.0%	10,051	0	0%	9,937	0	0.0%	9,824	0	0.0%
	Diapers	1.61%	2,908	0	0.0%	2,903	0	0.0%	2,870	0	0%	2,838	0	0.0%	2,806	0	0.0%
	Electronics	1.49%	2,700	261	9.7%	2,696	272	10.1%	2,665	272	10%	2,635	271	10.3%	2,605	271	10.4%
	Tires	1.68%	3,042	1,355	44.5%	3,037	1,420	46.8%	3,003	1,418	47%	2,969	1,416	47.7%	2,935	1,414	48.2%
	HHW	0.32%	588	231	39.3%	587	242	41.2%	581	242	42%	574	241	42.0%	568	241	42.5%
	Soils and Fines	0.38%	694	0	0.0%	692	0	0.0%	685	0	0%	677	0	0.0%	669	0	0.0%
	Other Composite Materials - Durable and/or inert	1.69%	3,057	76	2.5%	3,052	0	0.0%	3,017	0	0%	2,983	0	0.0%	2,949	0	0.0%
		Total Miscellaneous	12.79%	23,174	1,923	8.3%	23,134	1,935	8.4%	22,872	1,932	8%	22,613	1,929	8.5%	22,356	1,926

	2024	2025	2026	2027	2028
Population	250,449	250,449	250,110	249,772	249,434
MSW Generated (tons)	181,154.00	180,842	178,791	176,764	174,759
Per Capita MSW Generated (lbs/person/year)	1,447	1,444	1,430	1,415	1,401
MSW Diverted (tons)	35,781.00	30,234	30,190	30,113	30,103
Per Capita MSW Diverted (lbs/person/year)	286	241	241	241	241
MSW Disposed (tons)	145,373.00	150,607	148,601	146,650	144,657
Per Capita MSW Disposed (lbs/person/year)	1,161	1,203	1,188	1,174	1,160
Per Capita MSW Disposed (lbs/person/day)	3.18	3.30	3.26	3.22	3.18

		2029			2030			2031			2032			2033			
		MSW Materials Composition (%)	MSW generated (Tons)	MSW Diverted	% MSW Diverted	MSW generated (Tons)	MSW Diverted	% MSW Diverted	MSW generated (Tons)	MSW Diverted	% MSW Diverted	MSW generated (Tons)	MSW Diverted	% MSW Diverted	MSW generated (Tons)	MSW Diverted	% MSW Diverted
Material		100.00%	172,778	31,289	18.1%	170,819	30,015	17.6%	168,882	29,971	17.7%	166,967	29,925	17.9%	165,074	29,886	18.1%
Paper	Newspaper	3.64%	6,286	2,775	44.1%	6,215	2,771	44.6%	6,145	2,767	45.0%	6,075	2,763	45.5%	6,006	2,759	45.9%
	Corrugated Cardboard	9.95%	17,187	15,896	92.5%	16,993	15,873	93.4%	16,800	15,850	94.3%	16,609	15,827	95.3%	16,421	15,804	96.2%
	Other Recyclable Paper (Total)	10.78%	18,623	391	2.1%	18,412	391	2.1%	18,203	390	2.1%	17,997	390	2.2%	17,793	389	2.2%
	Other Compostable Paper	6.61%	11,416	120	1.1%	11,266	120	1.1%	11,158	120	1.1%	11,032	119	1.1%	10,906	119	1.1%
	Total Paper	30.97%	53,512	19,183	35.8%	52,906	19,155	36.2%	52,306	19,127	36.6%	51,713	19,099	36.9%	51,126	19,071	37.3%
Metal	Ferrous/Aluminum Containers (Total)	1.76%	3,041	307	10.1%	3,007	306	10.2%	2,973	306	10.3%	2,939	306	10.4%	2,906	305	10.5%
	Other Ferrous Metals	5.34%	9,226	2,356	25.5%	9,122	2,353	25.8%	9,018	2,349	26.1%	8,916	2,346	26.3%	8,815	2,343	26.6%
	Other Non-Ferrous Metals (Total)	1.24%	2,150	361	16.8%	2,125	361	17.0%	2,101	360	17.2%	2,077	360	17.3%	2,054	359	17.5%
	Total Metals	8.34%	14,417	3,025	21.0%	14,254	3,020	21.2%	14,092	3,016	21.4%	13,932	3,011	21.6%	13,774	3,007	21.8%
Plastic	PET Containers	0.91%	1,580	423	26.8%	1,562	423	27.1%	1,544	422	27.3%	1,526	421	27.6%	1,509	421	27.9%
	HDPE Containers	0.85%	1,463	43	2.9%	1,446	671	46.4%	1,430	670	46.9%	1,414	669	47.3%	1,397	670	47.9%
	Other Plastic (3-7) Containers	0.18%	308	31	10.1%	305	10	3.4%	301	10	3.4%	298	10	3.5%	294	10	3.5%
	Film Plastic	5.72%	9,882	2,524	25.5%	9,770	684	7.0%	9,659	683	7.1%	9,549	682	7.1%	9,441	681	7.2%
	Other Plastic (Total)	6.08%	10,498	55	0.5%	10,379	55	0.5%	10,261	55	0.5%	10,145	52	0.5%	10,030	55	0.5%
	Total Plastics	13.73%	23,730	3,076	13.0%	23,461	1,843	7.9%	23,195	1,841	7.9%	22,932	1,835	8.0%	22,672	1,837	8.1%
Glass	Glass Bottles, Jars and Containers	3.91%	6,763	398	5.9%	6,686	397	5.9%	6,610	397	6.0%	6,535	396	6.1%	6,461	396	6.1%
	Other Glass (Flat glass, dishware, light bulbs, etc.)	0.41%	701	0	0.0%	693	0	0.0%	685	0	0.0%	678	0	0.0%	670	0	0.0%
	Total Glass	4.32%	7,464	398	5.3%	7,380	397	5.4%	7,296	397	5.4%	7,213	396	5.5%	7,131	396	5.5%
Organics	Food Scraps	13.55%	23,418	0	0.0%	23,153	0	0.0%	22,890	0	0.0%	22,631	0	0.0%	22,374	0	0.0%
	Leaves and Grass / Pruning and Trimmings	6.09%	10,523	2,975	28.3%	10,403	2,971	28.6%	10,285	2,966	28.8%	10,169	2,962	29.1%	10,053	2,958	29.4%
	Total Organics	19.64%	33,941	2,975	8.8%	33,556	2,971	8.9%	33,176	2,966	8.9%	32,799	2,962	9.0%	32,428	2,958	9.1%
Textiles	Clothing/Footwear, Towels, Sheets	3.87%	6,680	709	10.6%	6,604	708	10.7%	6,529	707	10.8%	6,455	706	10.9%	6,382	705	11.0%
	Carpet	1.45%	2,506	0	0.0%	2,478	0	0.0%	2,450	0	0.0%	2,422	0	0.0%	2,395	0	0.0%
	Total Textiles	5.32%	9,186	709	7.7%	9,082	708	7.8%	8,979	707	7.9%	8,877	706	8.0%	8,777	705	8.0%
Wood	Total Wood (Pallets, crates, adulterated and non-compostable)	4.88%	8,424	0	0.0%	8,329	0	0.0%	8,234	0	0.0%	8,141	0	0.0%	8,049	0	0.0%
Miscellaneous	DIY Construction & Renovation Materials	5.62%	9,713	0	0.0%	9,603	0	0.0%	9,494	0	0.0%	9,386	0	0.0%	9,280	0	0.0%
	Diapers	1.61%	2,774	0	0.0%	2,742	0	0.0%	2,711	0	0.0%	2,681	0	0.0%	2,650	0	0.0%
	Electronics	1.49%	2,575	271	10.5%	2,546	270	10.6%	2,517	270	10.7%	2,489	269	10.8%	2,461	269	10.9%
	Tires	1.68%	2,902	1,412	48.7%	2,869	1,410	49.1%	2,836	1,408	49.6%	2,804	1,406	50.1%	2,772	1,404	50.6%
	HHW	0.32%	561	241	42.9%	555	240	43.3%	549	240	43.7%	542	240	44.2%	536	239	44.6%
	Soils and Fines	0.38%	662	0	0.0%	654	0	0.0%	647	0	0.0%	639	0	0.0%	632	0	0.0%
	Other Composite Materials - Durable and/or inert	1.69%	2,916	0	0.0%	2,883	0	0.0%	2,850	0	0.0%	2,818	0	0.0%	2,786	0	0.0%
	Total Miscellaneous	12.79%	22,103	1,923	8.7%	21,852	1,921	8.8%	21,604	1,918	8.9%	21,359	1,915	9.0%	21,117	1,912	9.1%

	2029	2030	2031	2032	2033
Population	249,097	248,760	248,423	248,087	247,752
MSW Generated (tons)	172,778	170,819	168,882	166,967	165,074
Per Capita MSW Generated (lbs/person/year)	1,387	1,373	1,360	1,346	1,333
MSW Diverted (tons)	31,289	30,015	29,971	29,925	29,886
Per Capita MSW Diverted (lbs/person/year)	251	241	241	241	241
MSW Disposed (tons)	141,489	140,804	138,911	137,042	135,187
Per Capita MSW Disposed (lbs/person/year)	1,136	1,132	1,118	1,105	1,091
Per Capita MSW Disposed (lbs/person/day)	3.11	3.10	3.06	3.03	2.99

Appendix G – Public Participation and Responsiveness

DRAFT

Appendix H – Resolution Adopting 2025-2034 LSWMP

DRAFT

Resolution No. 2025-12-XX

AUTHORIZING THE FORMAL ADOPTION OF THE 2025 LOCAL SOLID WASTE MANAGEMENT PLAN

Whereas, the Development Authority of the North Country (herein called the “Authority”) has served as the lead agency and Planning Unit responsible for the preparation and implementation of the region’s Local Solid Waste Management Plan (LSWMP), in accordance with the provisions of 6 NYCRR Part 366; and

Whereas, the Authority submitted a draft of the updated LSWMP to the New York State Department of Environmental Conservation (NYSDEC) and responded to requested clarifications; and

Whereas, the Planning Unit has received written confirmation from the NYSDEC that the 2025 LSWMP is approvable, as included in Appendix F of the Plan; and

Whereas, it is in the best interest of the Authority and the communities it serves to formally adopt the 2025 LSWMP as a guiding document for solid waste management policy and implementation over the planning period;

Now, Therefore, Be It Resolved by the Board of Directors of the Development Authority of the North Country:

That the Development Authority of the North Country hereby formally adopts the 2025 Local Solid Waste Management Plan as the official plan for the Planning Unit.

That the Executive Director of the Authority, or their designee, is authorized and directed to submit any required documentation to the NYSDEC confirming adoption and to take all necessary steps to implement the goals and strategies outlined in the 2025 LSWMP.

That a certified copy of this resolution, along with the finalized plan including Appendices F and G, be maintained in the Authority’s official records and shared with the NYSDEC as required.

That this Resolution shall take effect immediately.

Appendix I – DEC Approval Letter for 2025-2034 LSWMP

DRAFT